

MB INTERMEDIATE SCHOOL REUSE

SEPTEMBER 23, 2019



FACILITIES

MBI

- BUILDING CODE ANALYSIS COMPLETE
 - SD REVIEWED WITH OSF SEPTEMBER 9TH
 - NO MAJOR ISSUES
 - ADDED REQUIRED FIRE DEPARTMENT ACCESS
 - ENSURE THE RESTROOMS COMPLY WITH ADA
 - BUILDING SECURITY TO BE UPFITTED FOR 3 ZONES
 - PHONES TO BE REWORKED
 - NO MAJOR CHANGES TO PARKING
 - NO MAJOR CHANGES TO FIRE ALARM SYSTEM
 - NO BUILDING SPRINKLERS
- NEXT STEP IS BOARD APPROVAL TO PROCEED WITH DESIGN AND CONSTRUCTION



HCS
Horry County Schools



Myrtle Beach Intermediate School Code Analysis

Horry County, Myrtle Beach, South Carolina

Aug. 8, 2019

SK-01

FACILITIES

MBI

RECORDS

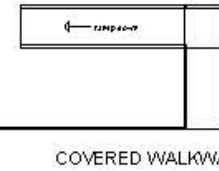
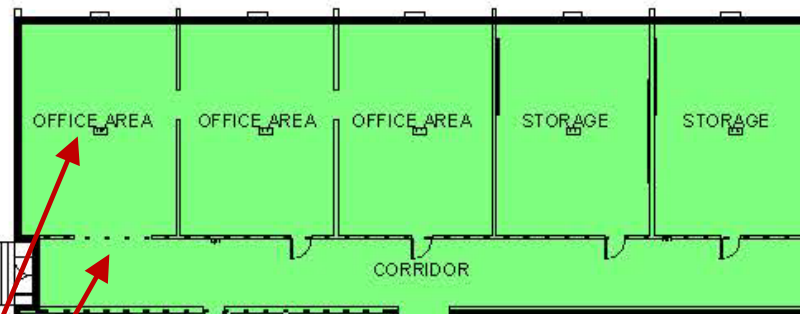
SCOPE OF WORK

- UPFIT 3 CR FOR OFFICES
- ADD GLASS ENTRY TO RECEPTION
- ADD NEW EXTERIOR SERVICE DOOR AND CANOPY
- ADD INTERIOR OPENING BETWEEN STORAGE ROOMS



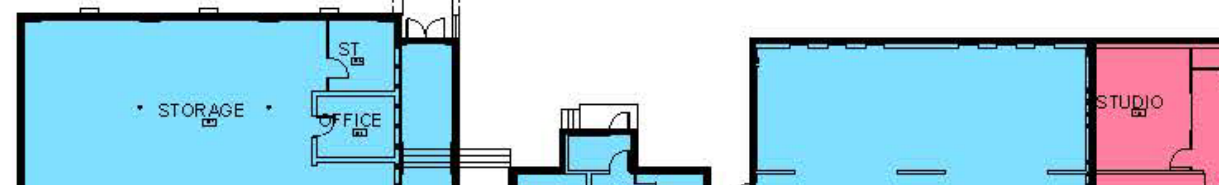
DROP OFF LOOP
SIDEWALK W/ ALUM. CANOPY
DROP OFF LOOP
SIDEWALK W/ ALUM. CANOPY

Area "A"
11,750 sf



COVERED WALKWAY

Area "B"
19,445 sf



ETV ANTE

MBI

SCOPE OF WORK

- REMOVE EXISTING WALL
- RENOVATE LOCKERS TO CIRCULATION
- CLOSE CORRIDOR / CREATE NEW EXIT
- ADD CANOPY AND GARAGE DOOR FOR LOADING / UNLOADING

Area "B"
11,220 sf

Area "C"
7,920 sf

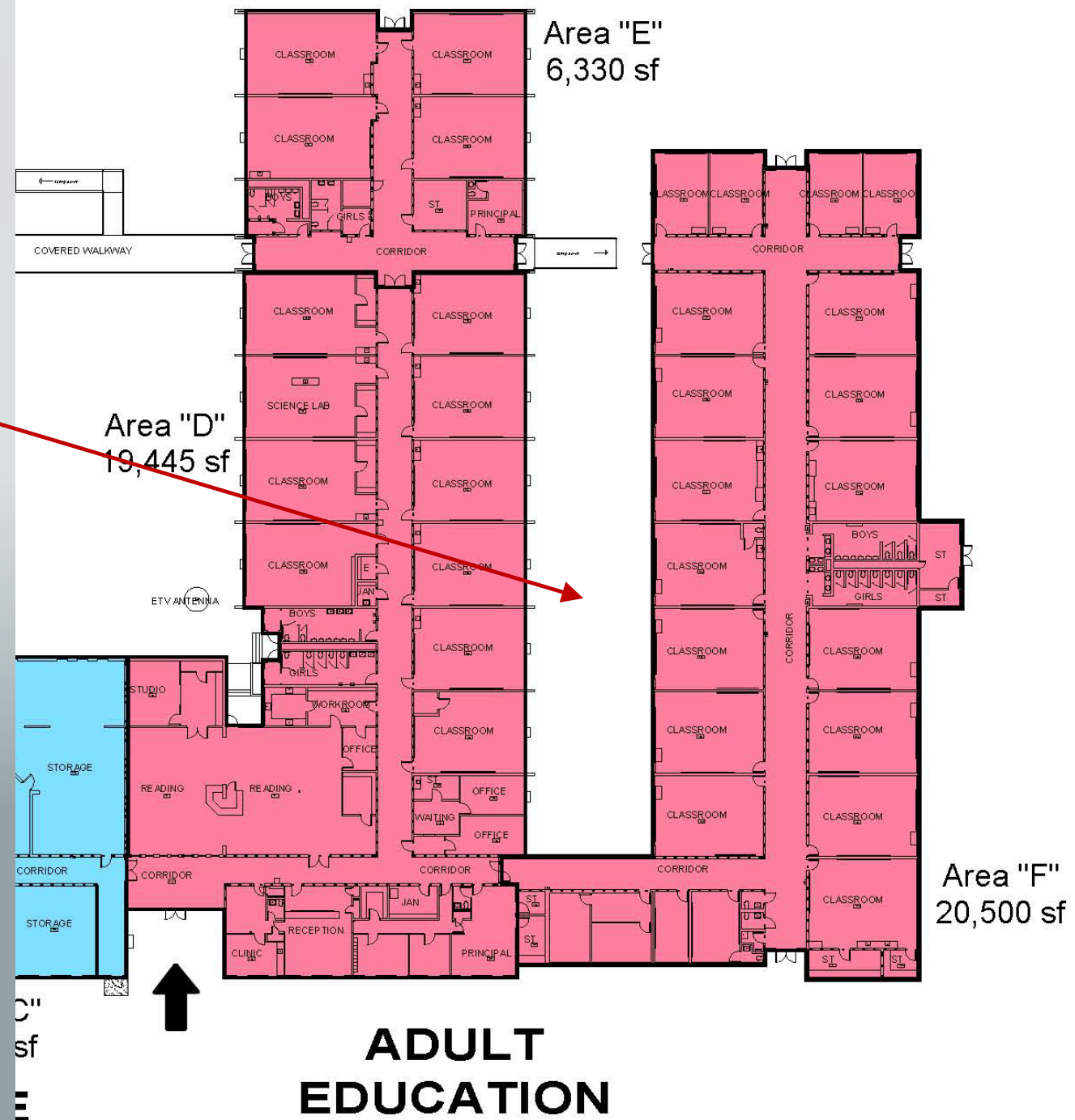
SCIENCE KITS

AREAS ARE SE

MBI

SCOPE OF WORK

- PROVIDE FIRE DEPARTMENT ACCESS
- ADD DOOR CLOSURES TO HALLWAY DOORS
- UPFIT TWO CR FOR COMPUTER LABS



MBI

PROJECT PRICING

RENOVATIONS

Demo, new openings, rework existing exterior windows, seal fire wall penetrations, new egress door and hallway, new canopy and delivery door for science kits, new door hardware and closures.

\$ 650,000

SITEWORK

Fire lane and drainage, signage, minor sidewalk reconfiguration.

\$ 125,000

TECHNOLOGY

Rework building security, phones, two (2) computer labs for adult ed., miscellaneous data.

\$ 75,000

FEES / CONTINGENCY

AE fees, special inspections, owners contingency.

\$ 100,000

TOTAL	\$ 950,000
--------------	-------------------