

# REPLACEMENT FACILITY FOR HORRY COUNTY EDUCATION CENTER

FEBRUARY 17, 2020

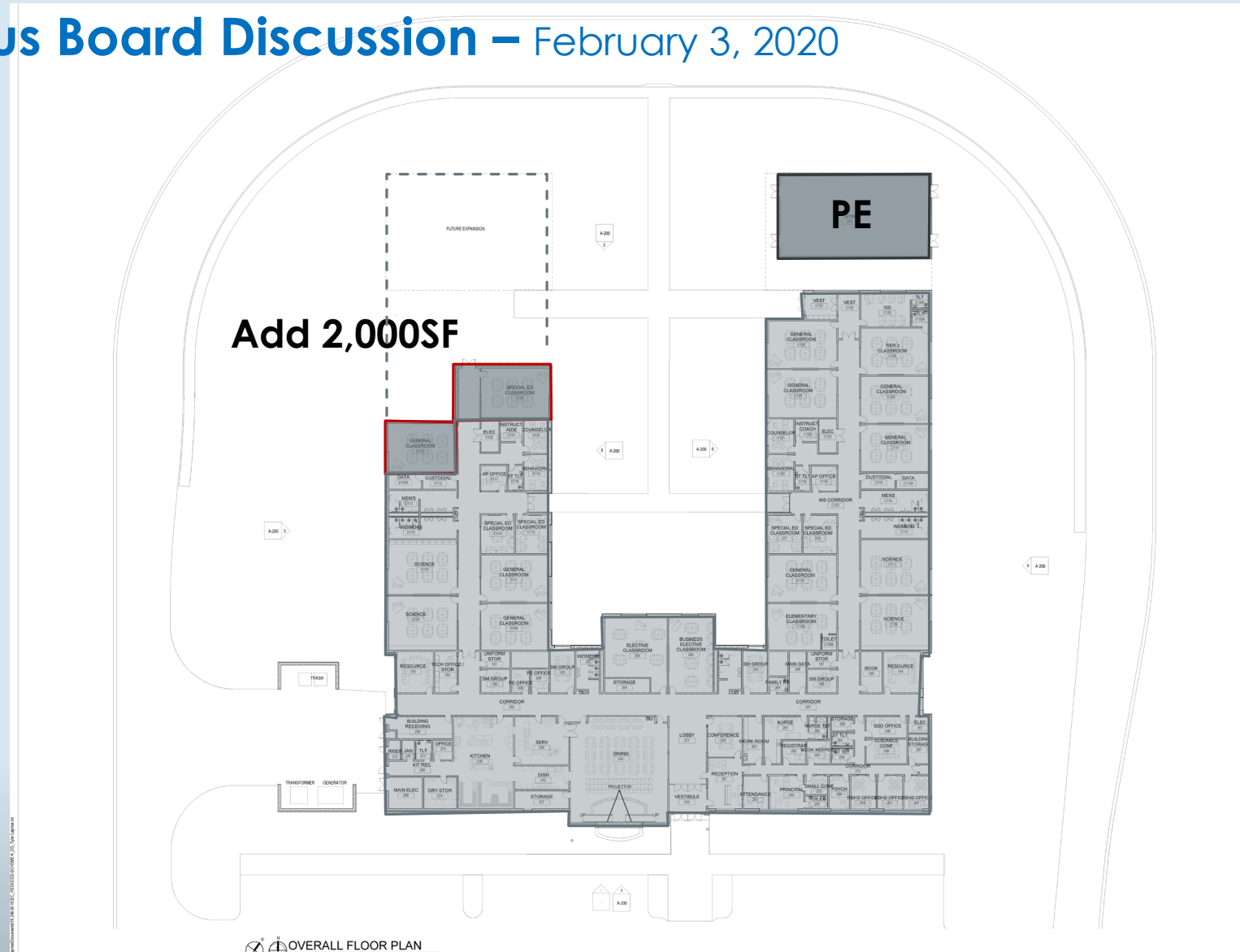
# HCEC

## Previous Board Discussion – February 3, 2020

### Scope

- ☐ Build entire site
- ☐ Build 40,000 SF School
- ☐ Build stand alone PE
  - ☐ 3,000SF
- ☐ Add 2,000SF
  - ☐ 4 teaching stations
- ☐ 27 Total Teaching stations
- ☐ Room for expansion

**\$ 16.4 M**



**Site**

**BUS DROP OFF**

**WET LANDS**

**RETENTION POND**

**STAFF PARKING**

**FOUR MILE ROAD**

Labels on the plan include: TRASH DUMPSTERS, TRANSFORMER / GENERATOR, FIRE LINE, PARKING (25 SPACES), VEHICULAR GATE, and SITE FENCING APPROX. LOCATION TO FOLLOW TREE LINE.

## FACILITIES

# HCEC

## OPTION 1 45,000 SF 27 Teaching Stations

### Scope

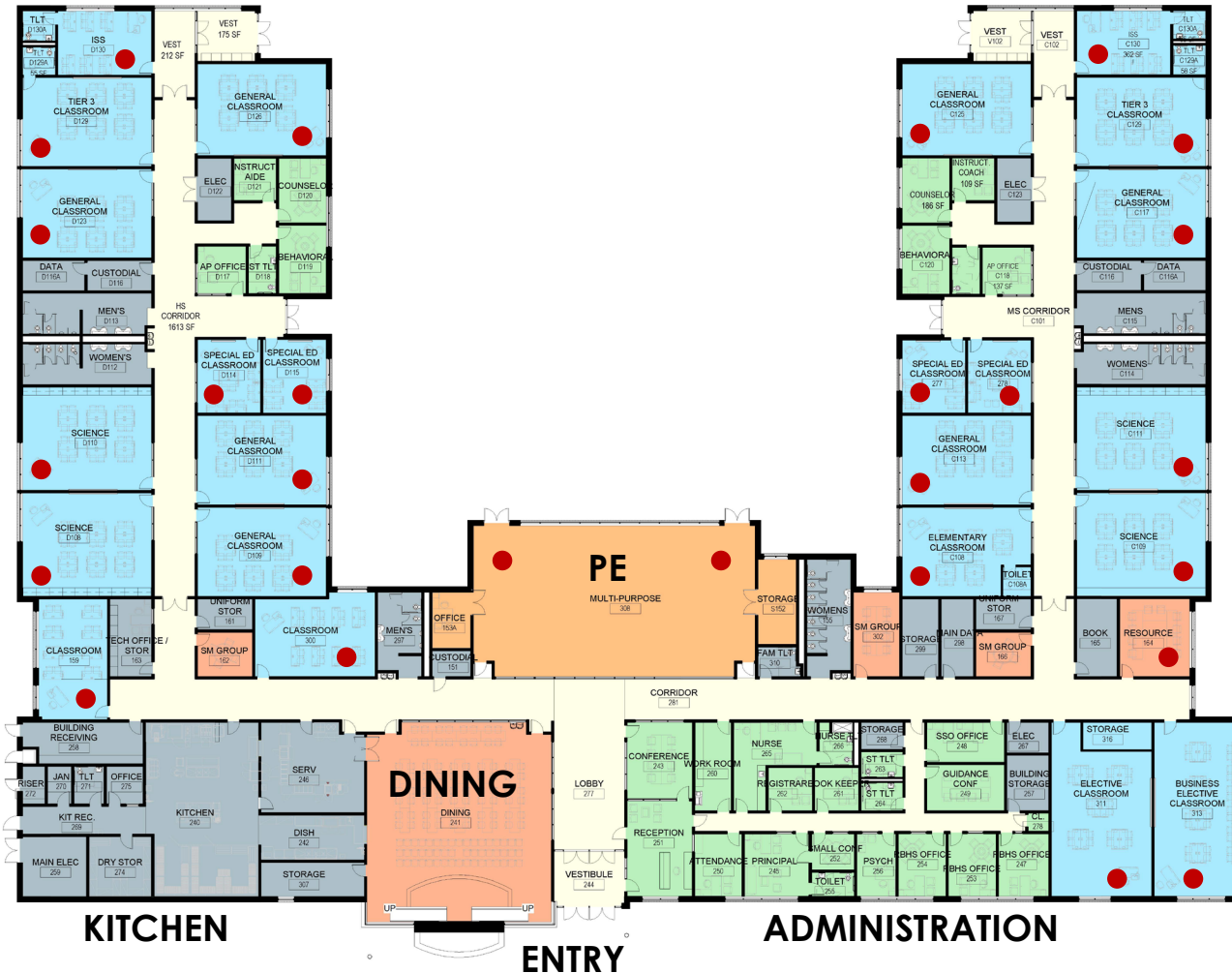
- ☐ Build entire site
- ☐ Build 45,000 SF School
- ☐ Full Kitchen
- ☐ Indoor PE space w/ divider
- ☐ 27 Total Teaching stations
- ☐ Room for expansion

\$ 16.70 M

SERVICE

MS WING

HS WING



KITCHEN

ENTRY

ADMINISTRATION

# HCEC

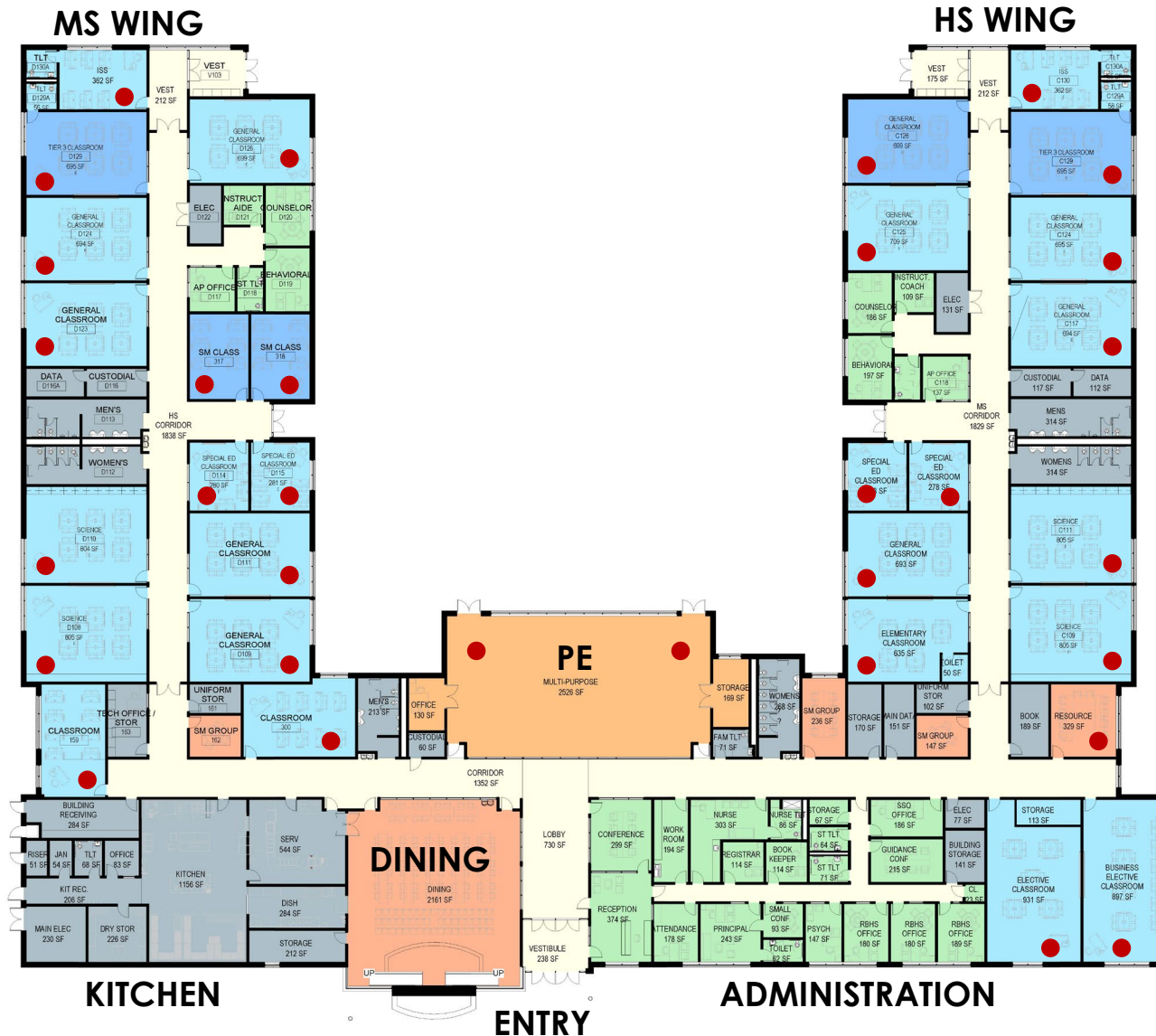
## OPTION 2 48,500 SF 32 Teaching Stations

### Scope

- ☐ Build entire site
- ☐ Build 48,500 SF School
- ☐ Full Kitchen
- ☐ Indoor PE space w/ divider
- ☐ 32 Total Teaching stations
- ☐ Room for expansion

\$ 17.90 M

SERVICE



### OPTION 1

- FULL SITE
- 45,000 SF BUILDING
  - FULL KITCHEN
  - INDOOR PE
    - DIVIDER
  - 27 TEACHER LOCATIONS
- \$ 16.70 M
  - Soft costs.....\$ 3.813 M
  - Site.....\$ 2.600 M
  - Building.....\$ 10.287 M
  - SF cost of building:
    - \$ 228.6 SF

### OPTION 2

- FULL SITE
- 48,500 SF BUILDING
  - FULL KITCHEN
  - INDOOR PE
    - DIVIDER
  - 32 TEACHER LOCATIONS
    - 3,500 additional sf.
- \$ 17.90 M
  - Soft costs..... \$ 4.220 M
  - Site.....\$ 2.600 M
  - Building.....\$ 11.080 M
  - SF cost of building:
    - \$ 228.6 SF



# HCEC

