



Facilities

Facilities Committee

February 26, 2024



Facilities

Auditorium Upgrades



Funding Request Summary for Auditoriums

Facilities

Daisy Elementary Auditorium Improvements:	\$1,500,000
Aynor High Auditorium Improvements:	\$1,500,000
Myrtle Beach High Auditorium Seating:	\$1,050,000
Total Requests:	\$4,050,000
2021-24 Building Program Residual Funds:	\$4,090,636 available

Improvements to Aynor High and Daisy Elementary Auditoriums

Aynor High School Auditorium

- Updates for Disabled Accessibility and Safety
- Seats, Carpet, Stair Treads, Risers, Railings, Grab Bars, Signage, Emergency Lighting
- Possible other code items depending on regulatory review

Design work is funded and underway

Estimated Construction Cost: \$1,500,000

Daisy Elementary School Theater

- Updates for Disabled Accessibility and Safety
- Carpet, Stair Treads, Risers, Railings, Grab Bars, Signage, Emergency Lighting
- Possible other code items depending on regulatory review

Design work is funded and underway

Estimated Construction Cost: \$1,500,000



Seat Replacements for Myrtle Beach High Auditorium

Seats in the Myrtle Beach High auditorium need replacement.

Roughly 2,000 seats, the largest auditorium in Horry County Schools.

Facilities has been aware of issues continuing to occur with the springs in the seats, coverings, broken seat connections, and other issues.

Seats appear to be original to the construction in 1986.

The school will be vacant this summer due to the ongoing HVAC replacement and it would be an ideal time to do the replacement.

Facilities needs to order the seating soon to meet the summer window.

Estimated Replacement Cost: \$1,050,000



Facilities

Modular Classroom Requests for 2024-25



Modular Classroom Requests for 2024-25

Facilities

Carolina Forest Elementary

- Adding 4 positions
- Consider adding 4 leased classrooms
- Leased units can be returned once capacity is addressed

Pee Dee Elementary

- Adding 4 positions
- Consider adding 4 leased classrooms and bathroom
- Relocate moduls we own from Carolina Forest Elementary/Ocean Bay Elementary/River Oaks Elementary once the two new elementary schools open

River Oaks Elementary

- Adding 8 positions
- Consider adding 8 leased classrooms and bathroom
- Leased units can be returned once capacity is addressed

Ten Oaks Middle

- Adding 4 positions next year, added 2 additional this year after school started
- Consider adding 8 leased classrooms and bathroom
- Relocate moduls we own from Carolina Forest Elementary/Ocean Bay Elementary/River Oaks Elementary once the two new elementary schools open



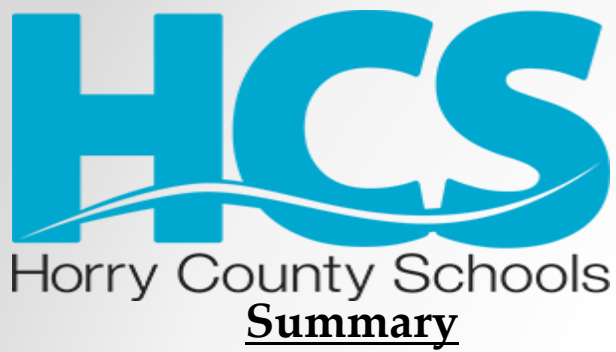
Modular Classroom Requests for 2024-25

HCS owns 126 modular classrooms and 12 restroom sections.

Facilities

SCHOOL	NUMBER	METHOD	RATIONALE
Carolina Forest Elementary	4 (attach to existing 4 we are currently leasing)	Lease	Lease until two new schools open for capacity relief
Pee Dee Elementary	4 w/Restroom	Lease	Two new elementary schools in Carolina Forest area will free up classrooms for relocation*
River Oaks Elementary	8 w/Restroom	Lease	Lease until two new schools open for capacity relief
Ten Oaks Middle	8 w/Restroom	Lease	Two new elementary schools in Carolina Forest area will free up classrooms for relocation*

*There are 64 modular classrooms we own between CFE/OBE/ROE schools



Modular Classroom Requests for 2024-25

Total Classrooms Requested: 24 + 3 restrooms

Recommendation: Lease all units

Analysis:

- HCS currently owns 126 modular classrooms.
- 64 of these classrooms are located at Carolina Forest Elementary, Ocean Bay Elementary and River Oaks Elementary
- Two new elementary schools for the Carolina Forest area are under construction.
- Once new schools come on-line, modular classrooms we own can be relocated.
- Leased modulares can then be returned.

Budget Request: \$3,600,000

Funding Source: Unassigned General Fund – Fund Balance: \$3,600,000

Next steps:

March 11, 2024 - Board of Education Meeting



Modular Classroom Requests for 2024-25

Facilities

Setup Costs & Lease Payments								
2024-2025	Classrooms	Restroom	Delivery/Setup*	Lease Payments	Breakdown & Removal	Contingency**	Tax (8%)	Total
Carolina Forest Elementary	4	0	\$ 340,586	\$ 84,000	\$ 44,208	\$ 42,771	\$ 9,205.76	\$ 520,770
Pee Dee Elementary	4	1	\$ 480,153	\$ 118,200	\$ 58,385	\$ 52,357	\$ 12,563.20	\$ 721,658
River Oaks Elementary	8	1	\$ 728,795	\$ 202,200	\$ 102,593	\$ 79,563	\$ 21,768.96	\$ 1,134,921
Ten Oaks Middle	8	1	\$ 796,855	\$ 202,800	\$ 102,593	\$ 87,677	\$ 21,816.96	\$ 1,211,742
			\$ 2,346,389	\$ 607,200	\$ 307,779	\$ 262,368	\$ 65,355	\$ 3,589,090

*The total estimated cost for delivery and setup includes all associated components necessary to operate including architectural and engineering, foundations, delivery, set up, utilities, fire alarm, security, technology, site work, ramps, steps, canopies, walkways, parking, etc.

**Contingency based on 15% of site development costs.

Funding Source: Unassigned General Fund – Fund Balance: \$3,600,000



Request for Sewer Easement at Riverside Elementary School

NOTES:

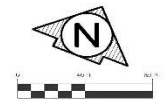
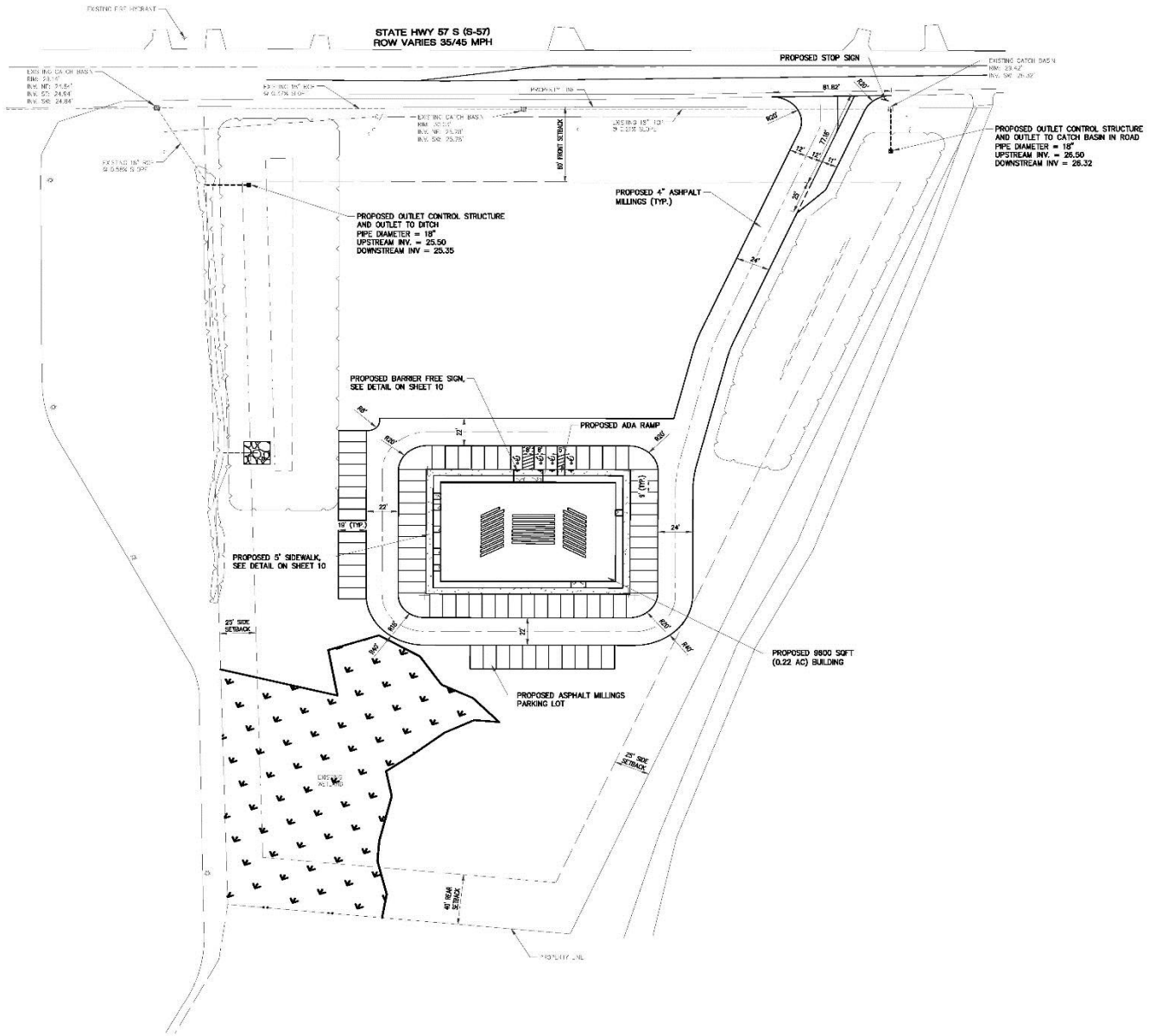
1. THERE WILL BE NO DUMPSTER ON SITE.
2. LIGHT FIXTURES SHALL BE FULL-CUTOFF HAD MEET ILLUMINATING ENGINEERING SOCIETY OF NORTH AMERICA (IESNA) CRITERIA. LIGHTING SHALL BE AIMED STRAIGHT DOWN.
3. ALL PROPOSED SIGNAGE WILL NEED TO BE SUBMITTED SEPARATELY FOR REVIEW.
4. NO COVENANTS OR RESTRICTIONS EXIST THAT WILL CONFLICT WITH ANY OF THE USES OF THE SITE THAT ARE BEING PROPOSED.
5. THERE ARE NO LIVE OAK TREES OF 24" DBH OR GREATER; LIVE OAKS 24" DBH OR GREATER CANNOT BE REMOVED, DAMAGED, OR DESTROYED.

PARKING TABLE

SEATS	REQUIRED	SHOWN
295	74	77

ZONING NOTES:

1. ZONING DISTRICT: COMMERCIAL FOREST AGRICULTURE (CFA)
 - 1.1. LAND USE: COMMERCIAL
2. AREA REQUIREMENTS:
 - 2.1. MINIMUM AREA REQUIRED: 1 ACRE
 - 2.2. AREA PROVIDED: 5.76 ACRES
3. LOT WIDTH REQUIREMENTS:
 - 3.1. MINIMUM LOT WIDTH REQUIRED: 100'
 - 3.2. LOT WIDTH PROVIDED: 530'
4. BUILDING SQFT REQUIREMENTS:
 - 4.1. MAX BUILDING SQFT: 50,000
 - 4.2. PROPOSED BUILDING SQFT: 9,600
5. SETBACK REQUIREMENTS:
 - 5.1. FRONT: 60'
 - 5.2. SIDE: 25'
 - 5.3. REAR: 40'
6. BUILDING HEIGHT REQUIREMENTS:
 - 6.1. MAX BUILDING HEIGHT: 35'
 - 6.2. PROPOSED BUILDING HEIGHT: 29'
7. PARKING REQUIREMENTS:
 - 7.1. USE GROUP: CHURCH, SYNAGOGUE, MOSQUE
 - 7.1.1. REQUIRED SPACES: 1 SPACE PER 4 SEATS IN MAIN ASSEMBLY ROOM; EACH 24" PEW SPACE SHALL COUNT AS A SEAT.
 - 7.1.2. PROVIDED SPACES: 77 (1 VAN ACCESSIBLE)
8. OVERLAY DISTRICT REQUIREMENTS: N/A



RYAN E. HARVEY, P.E.
 CIVIL ENGINEERING
 29532 North Myrtle Beach, SC
 29582
 C.E. (943) 655-5454

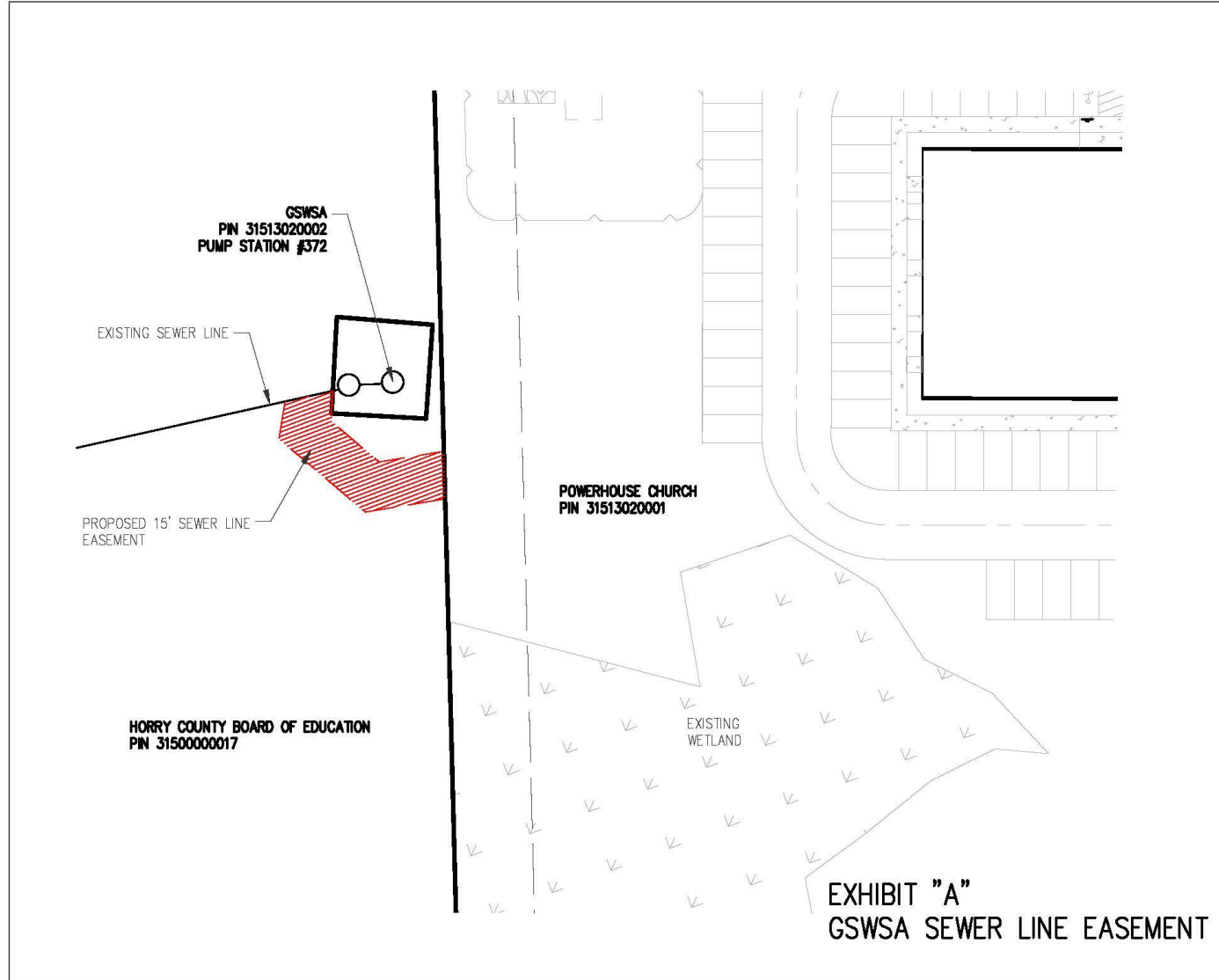


SITE PLAN
POWERHOUSE CHURCH
 STATE HWY 57 S
 LITTLE RIVER, SC 29566
 PREPARED FOR: POWERHOUSE OF NORTH MYRTLE BEACH

TITLE NO.: T-111
 SCALE: 1/8" = 1'-0"
 DATE: 12/22/2023
 DRAWN BY: TMO
 CHECKED BY: RLH
 DWG. NO.:

3 DAYS BEFORE DIGGING IN
 SOUTH CAROLINA
CALL 1-888-721-7877
 PALMETTO UTILITY PROTECTION SERVICE

Request for Sewer Easement



Request for Sewer Easement

Facilities

- The initial building will be a prefabricated steel building with various amenities. Future plans are to build a larger sanctuary at the front of the lot a few years down the road.
- Building size is approximately 9,600 sf.
- Discussions with Grand Strand Water and Sewer indicated the current pump station can handle the addition of the church facility and should also be able to handle any future needs.
- If additional improvements to the pump station are needed in the future, GSWSA would address them since they own the pump station.