



# **Data for R-1 Monitoring Report on LITERACY**

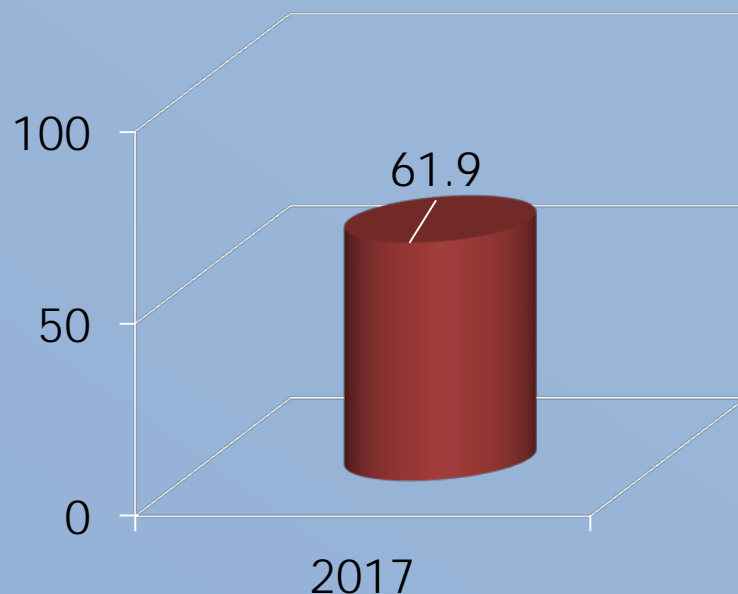
**November 2017**

## Second Grade Reading

**GOAL:** Increase the percentage of students reading on grade level by the end of second grade

**MEASURE:** MAP Reading (Spring) Lexile range for grade 2; percentage of students reading within expected Lexile range

% At or Above Grade Level Lexile



MAP Reading (Spring) Lexile range for grade 2; percentage of students reading within expected Lexile range

**1-YEAR STATUS:**

**n/a**

MAP Reading is on a new scale beginning 2017 so comparisons with prior years are not valid.

**Grades 3-8**

**SC READY**

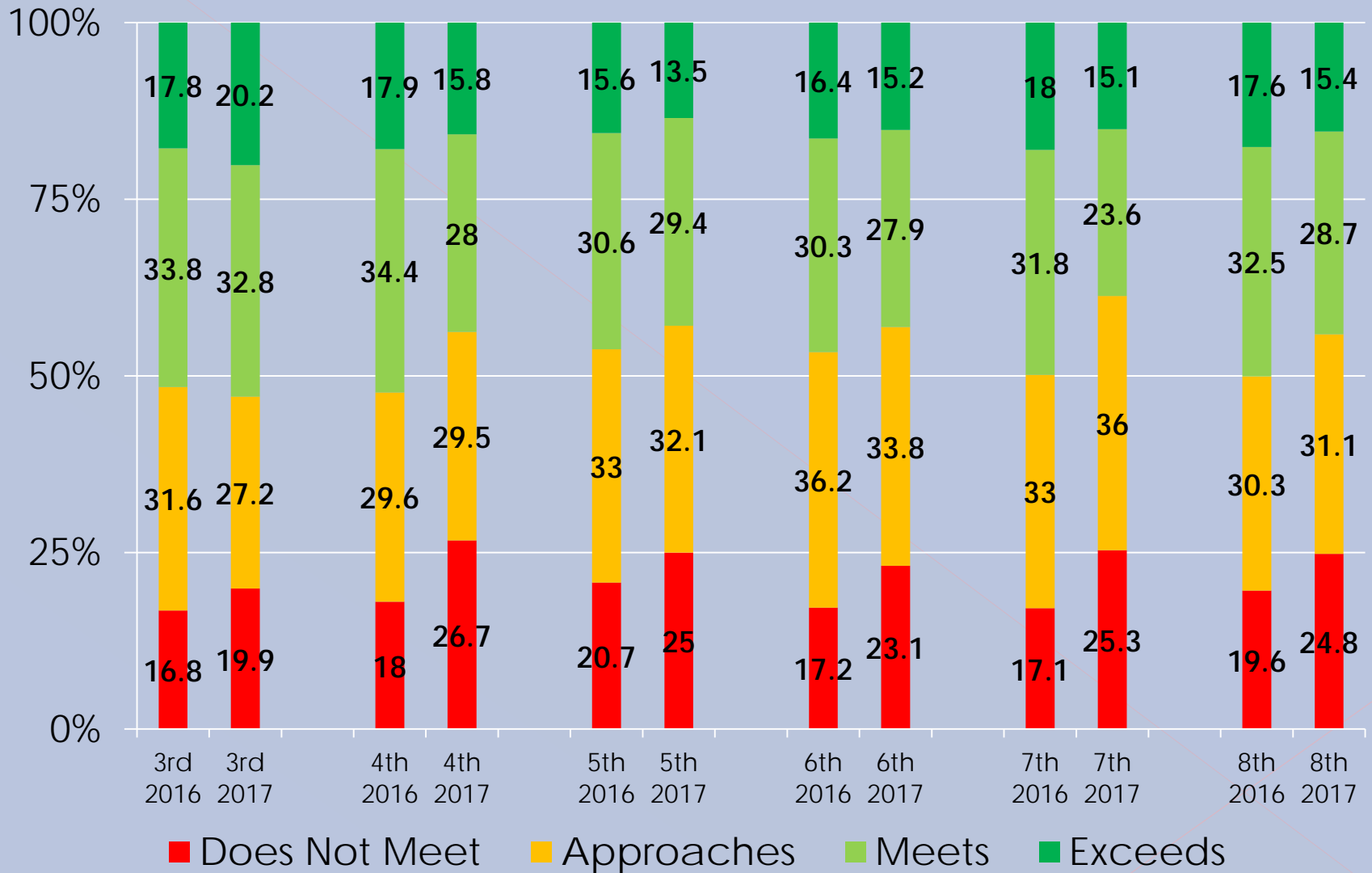
# **English Language Arts**

## **(READING and WRITING)**

Spring 2017

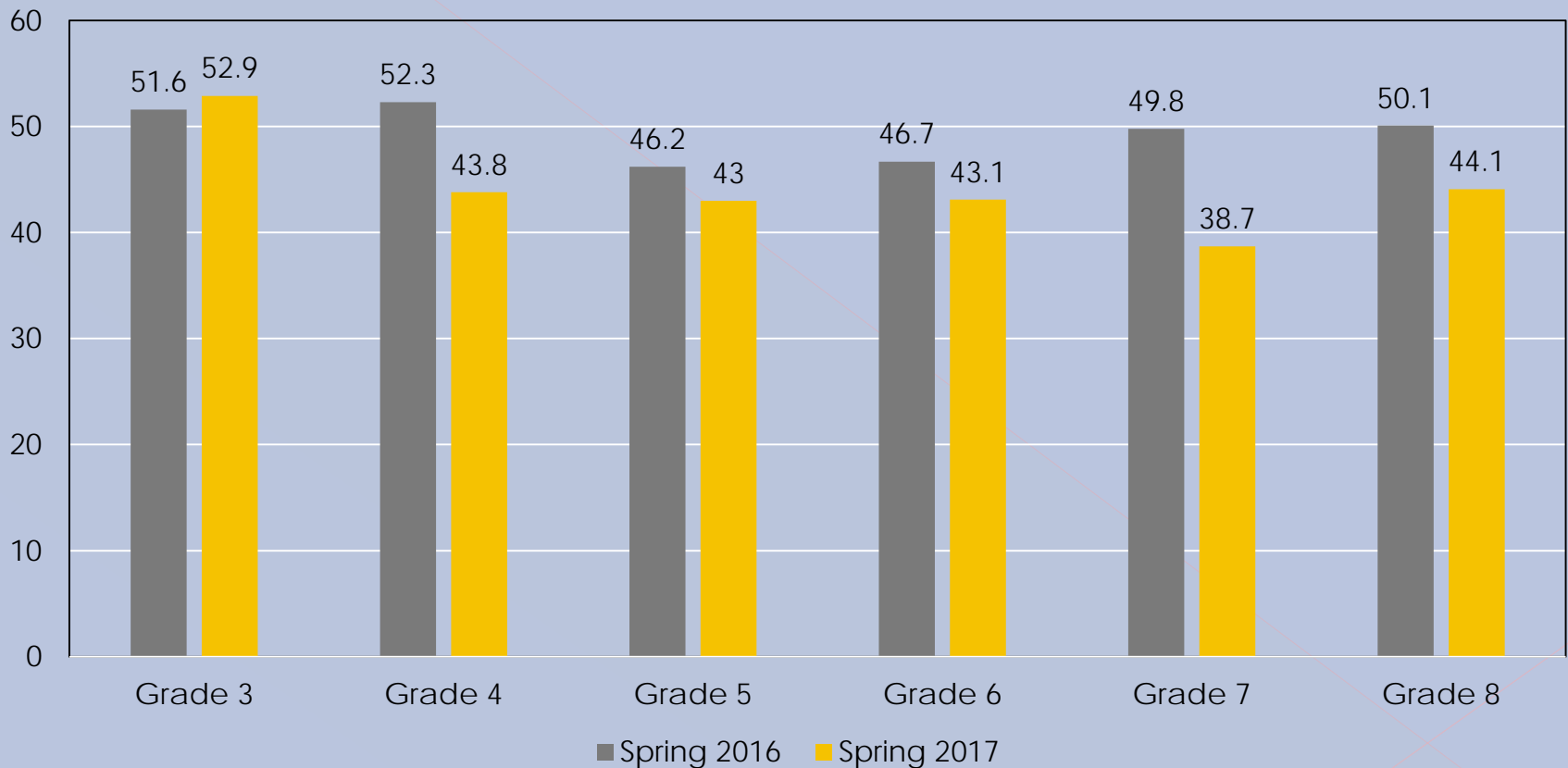


# SC READY: ELA



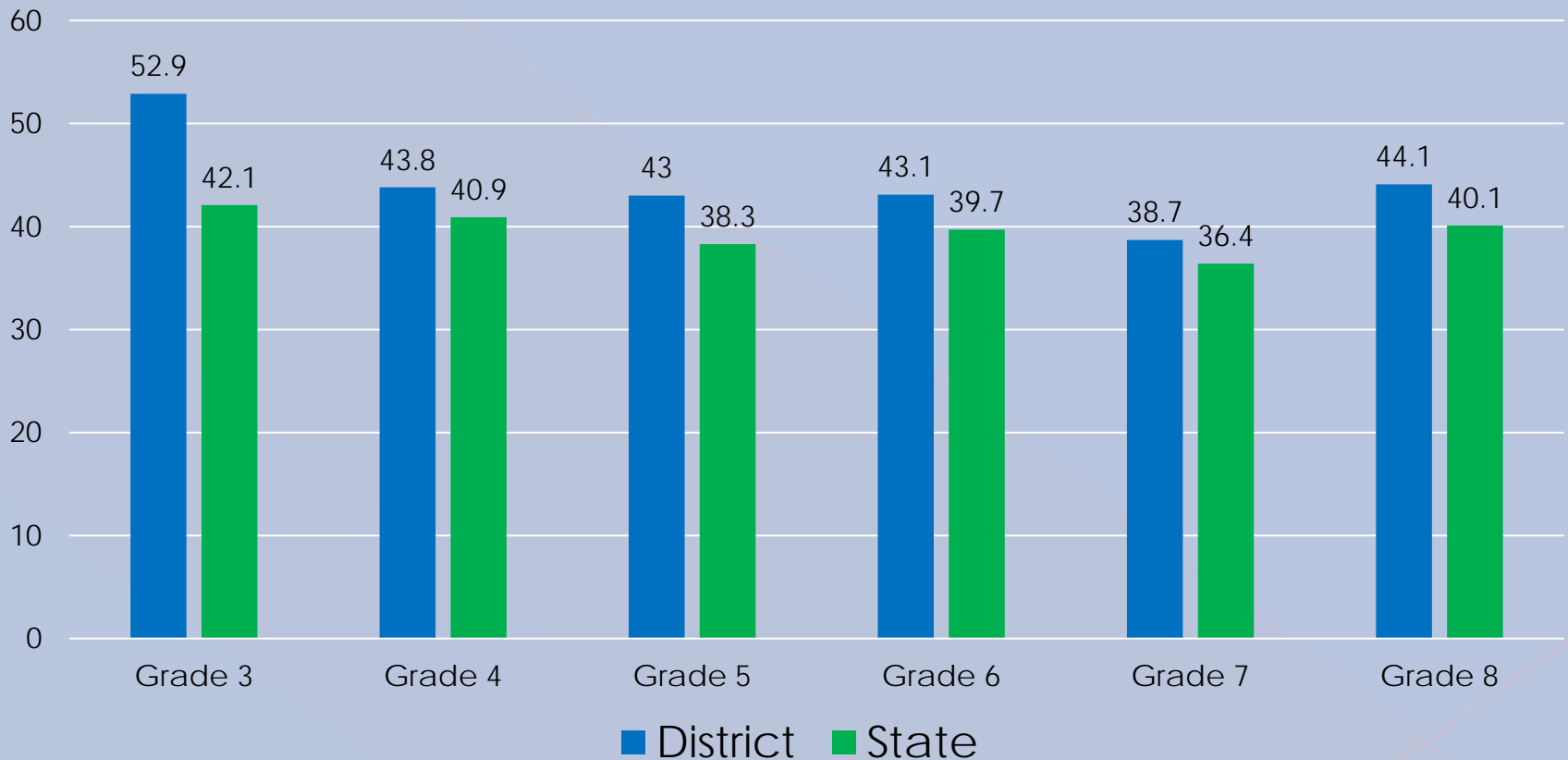
# SC READY English Language Arts % Level 3+ (Meets and Exceeds)

Two-Year Comparison



# SC READY English Language Arts % Level 3+ (Meets and Exceeds)

District Compared to State, 2017

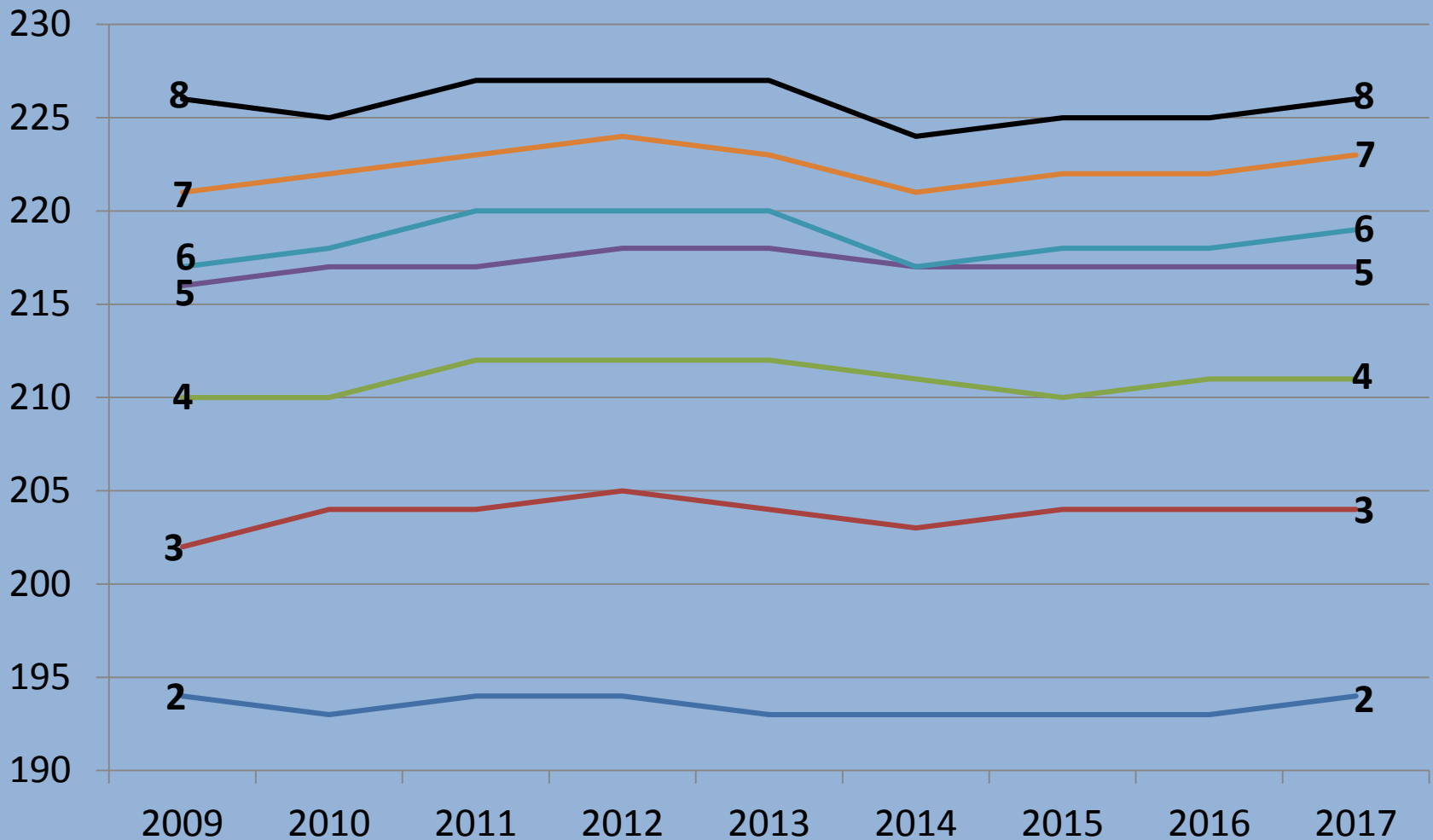


**MAP**

**Reading and Language**

# MAP Reading Scores Over Time

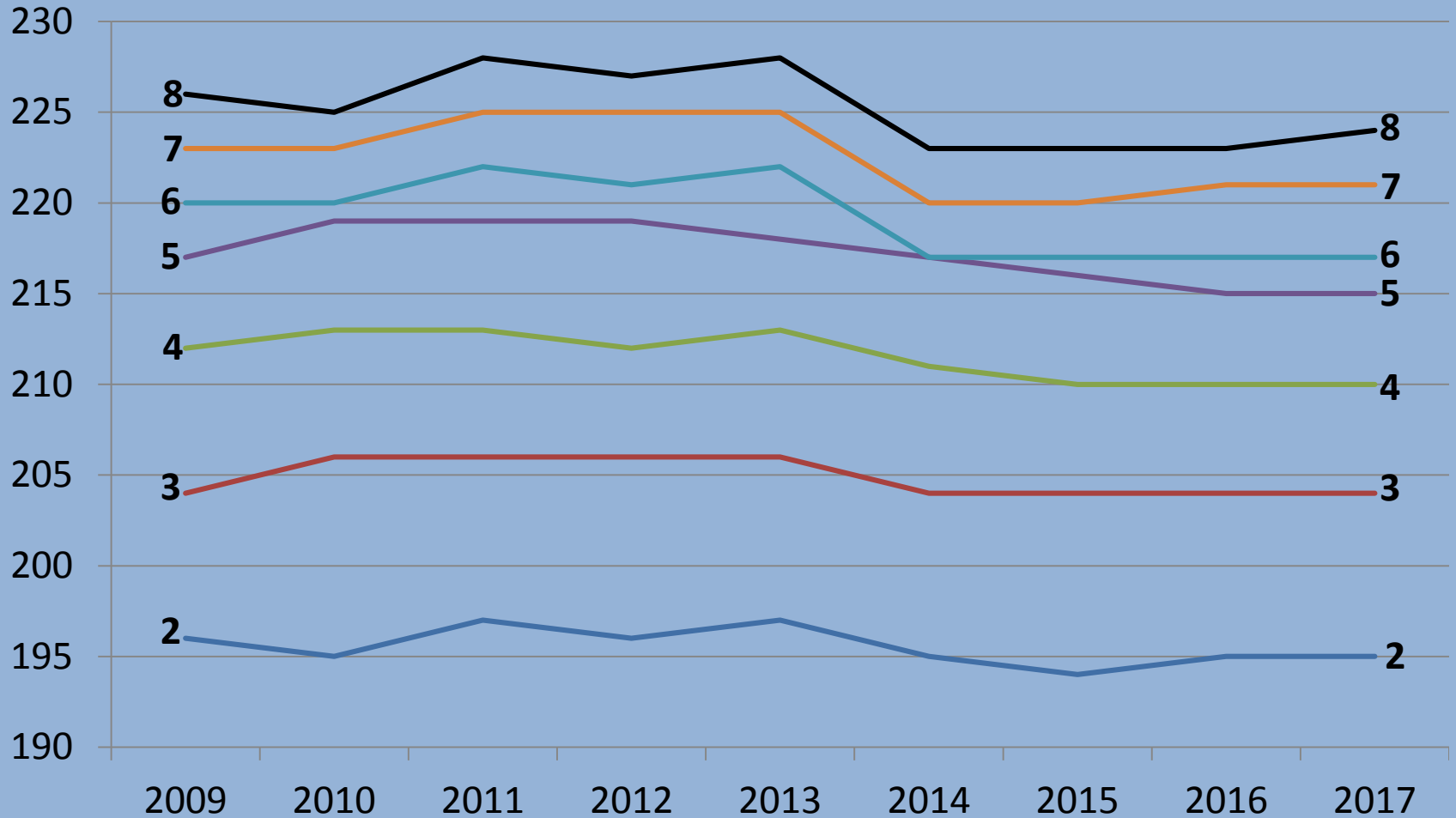
Spring Median RIT





# MAP Language Scores Over Time

Spring Median RIT



# English I

## **End-of-Course Test**

# English I End-of-Course Test

## % Passing

