



Data for R-1 Monitoring Report on LITERACY

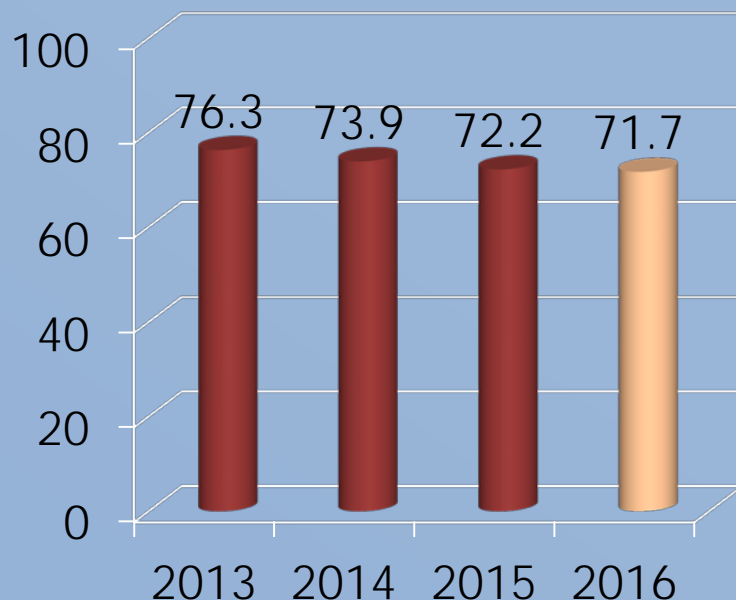
November 2016

Second Grade Reading

GOAL: Increase the percentage of students reading on grade level by the end of second grade

MEASURE: MAP Reading (Spring) Lexile range for grade 2; percentage of students reading within expected Lexile range

% At or Above Grade Level Lexile



MAP Reading (Spring) Lexile range for grade 2; percentage of students reading within expected Lexile range

1-YEAR STATUS:

↓ 0.5

Grades 3-8

SC READY

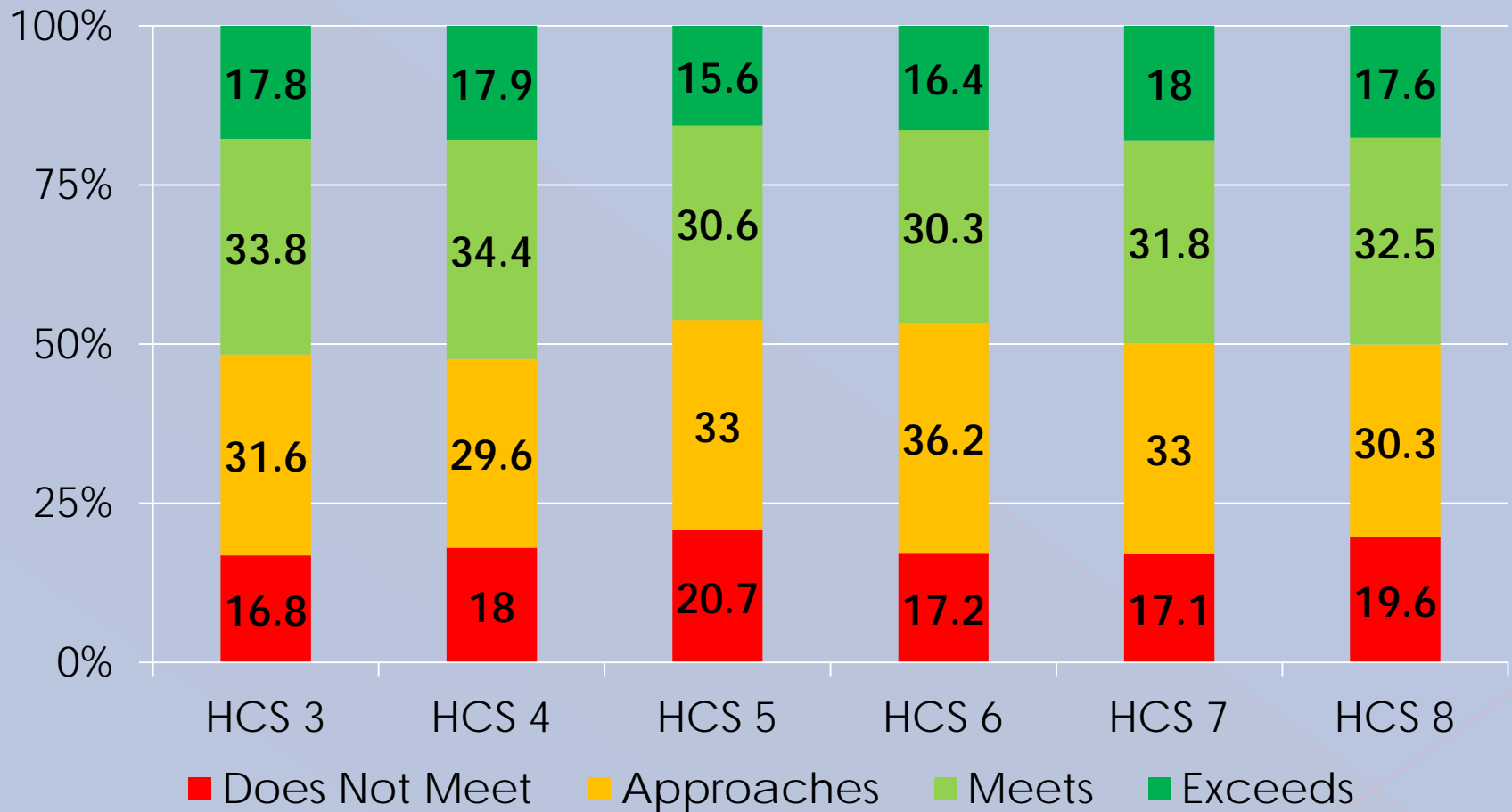
English Language Arts

(READING and WRITING)

Spring 2016

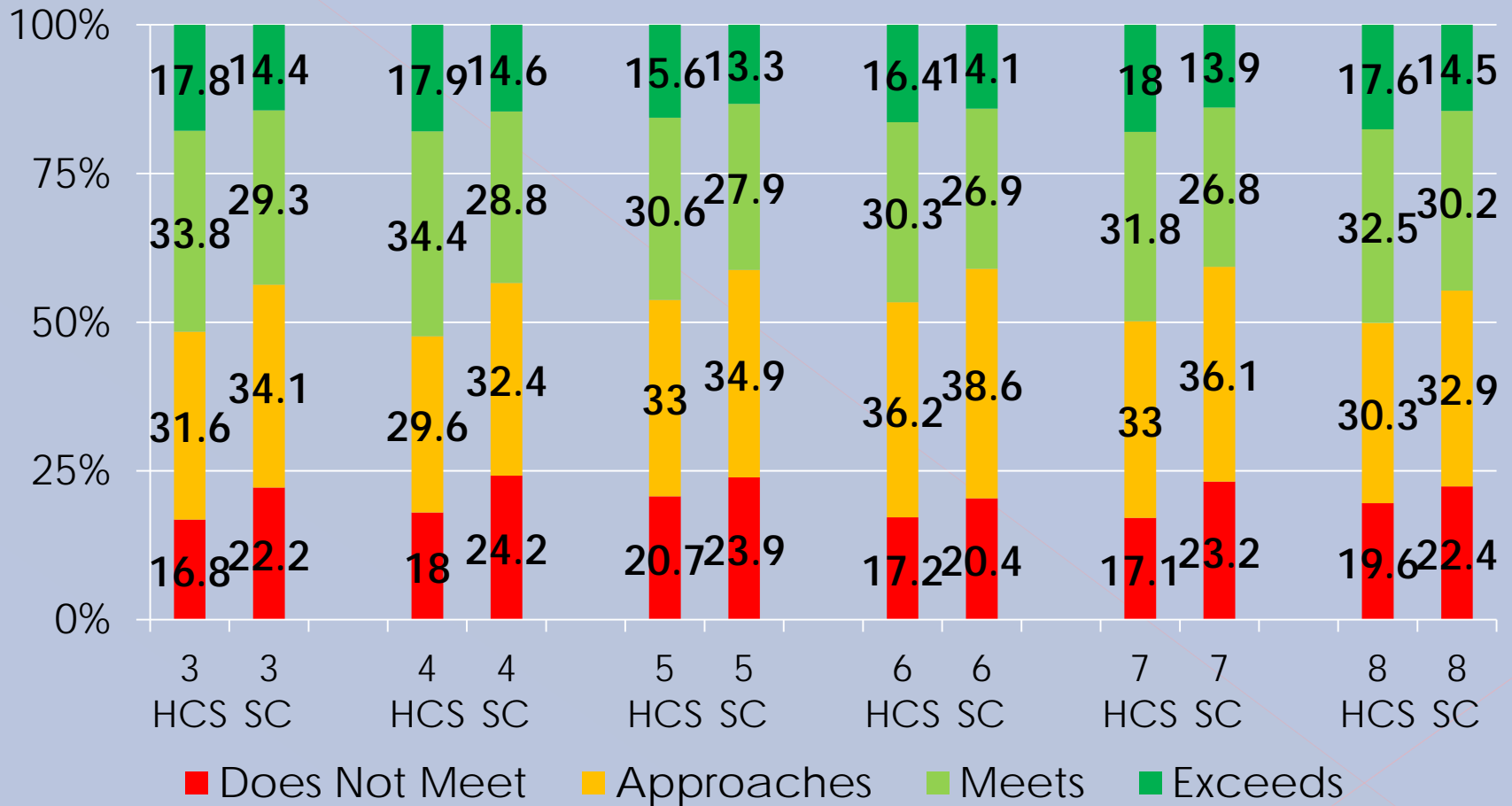


SC READY: ELA, Spring 2016



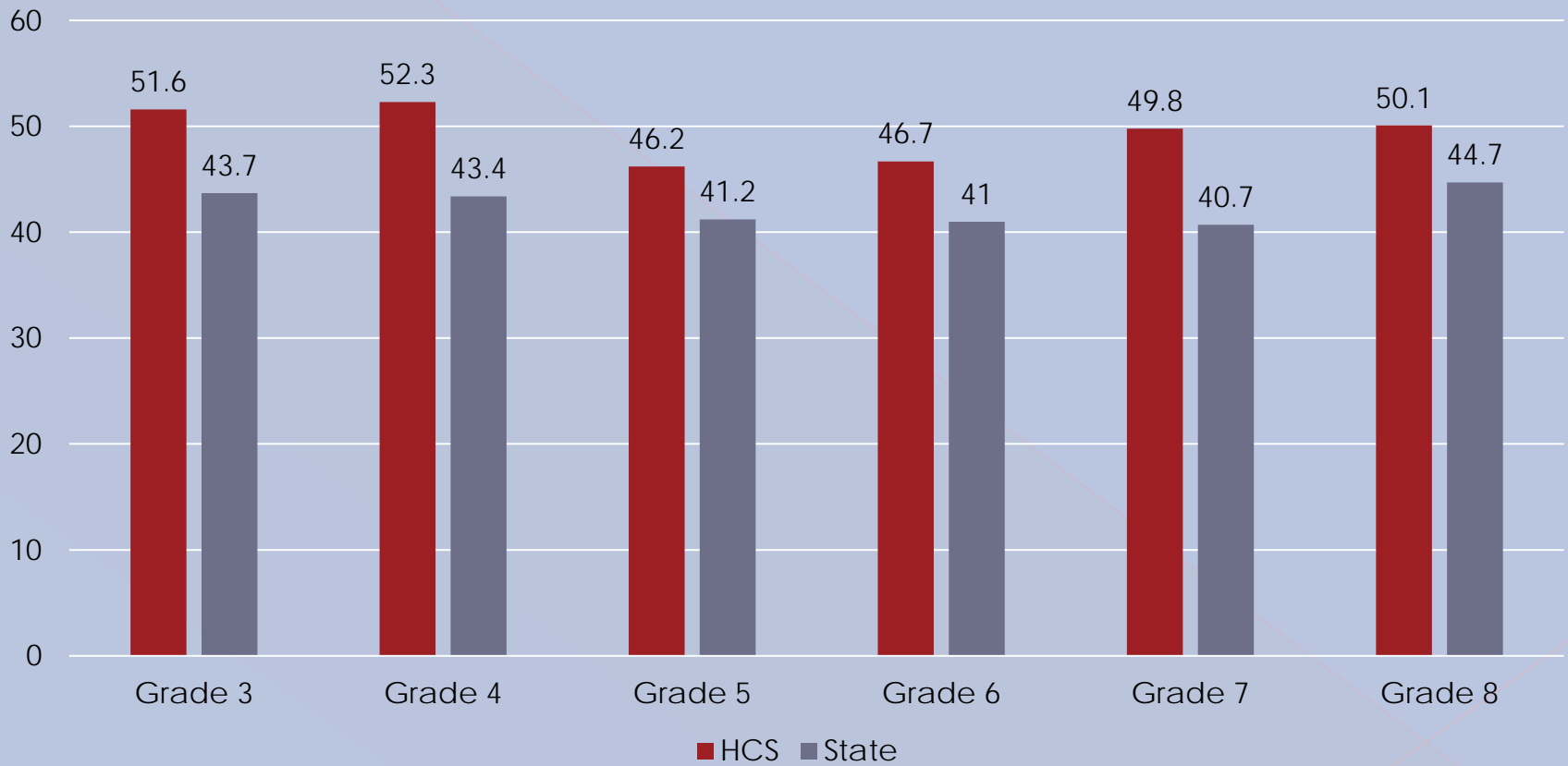
SC READY: ELA

HCS to State Comparison



SC READY English Language Arts % College and Career Ready, Spring 2016

District to State Comparison

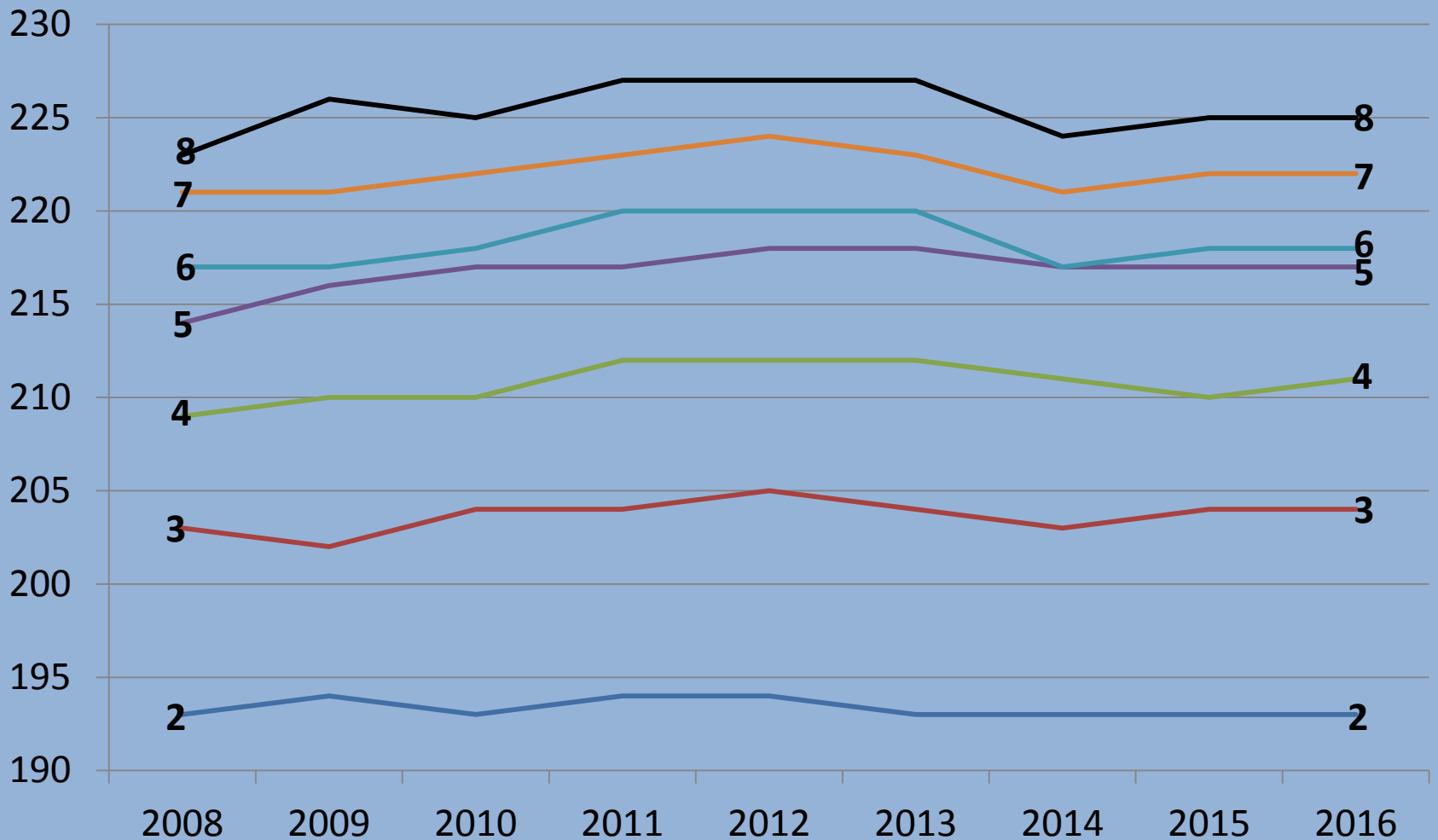


MAP

Reading and Language

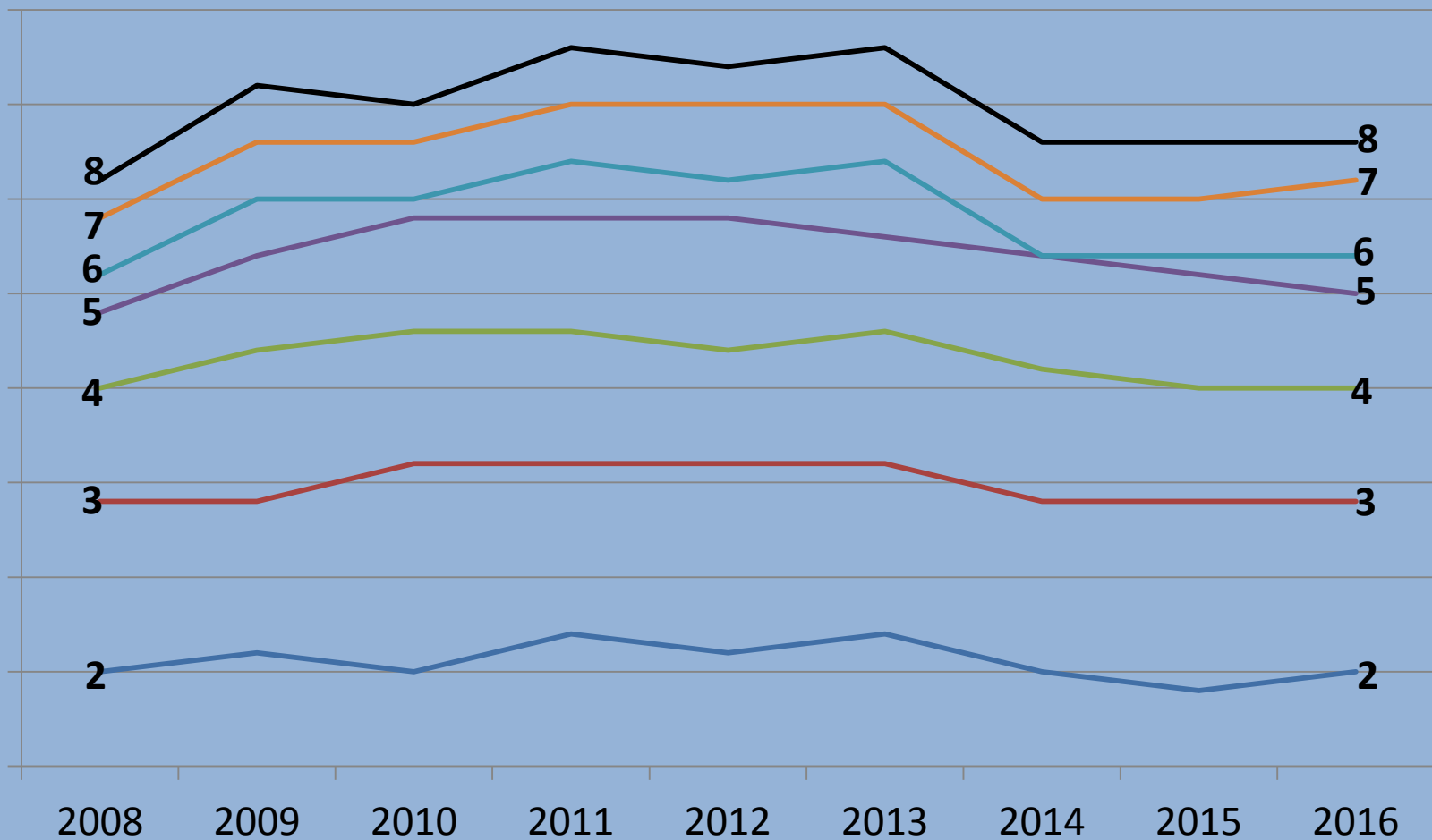
MAP Reading Scores Over Time

Spring Median RIT



MAP Language Scores Over Time

Spring Median RIT



English I

End-of-Course Test

English I End-of-Course Test

% Passing

