



Data for Monitoring Report on LITERACY

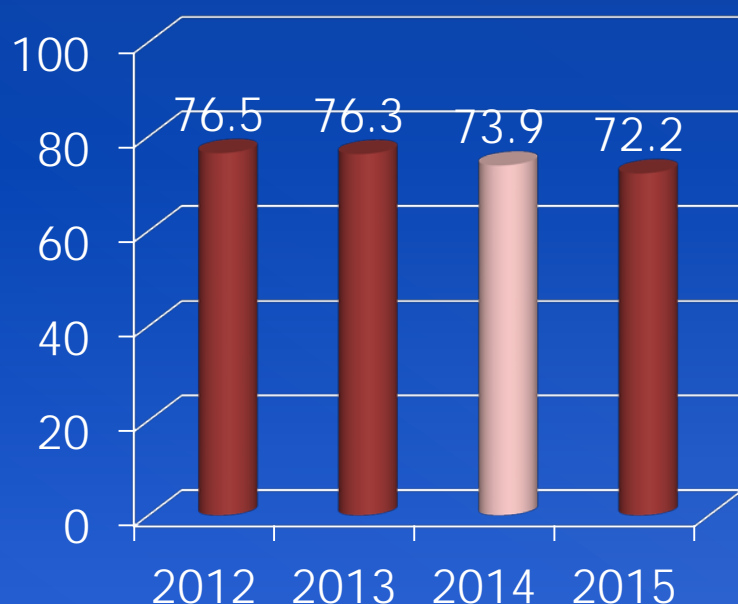
November 2015

Second Grade Reading

GOAL: Increase the percentage of students reading on grade level by the end of second grade

MEASURE: MAP Reading (Spring) Lexile range for grade 2; percentage of students reading within expected Lexile range

% At or Above Grade Level Lexile



MAP Reading (Spring) Lexile range for grade 2; percentage of students reading within expected Lexile range

1-YEAR STATUS:



Down 1.7

Grades 3-8

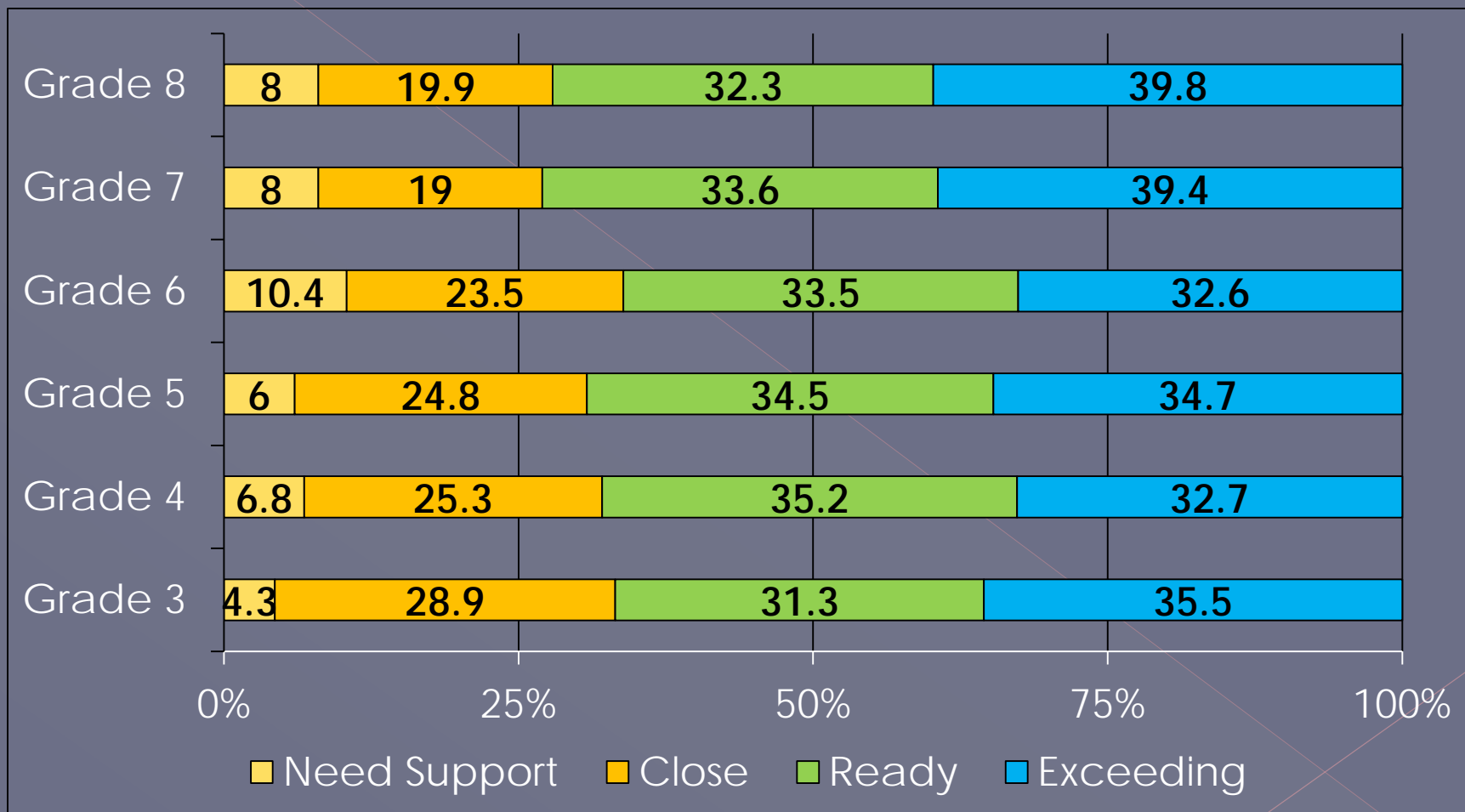
ACT Aspire

English, Reading, Writing



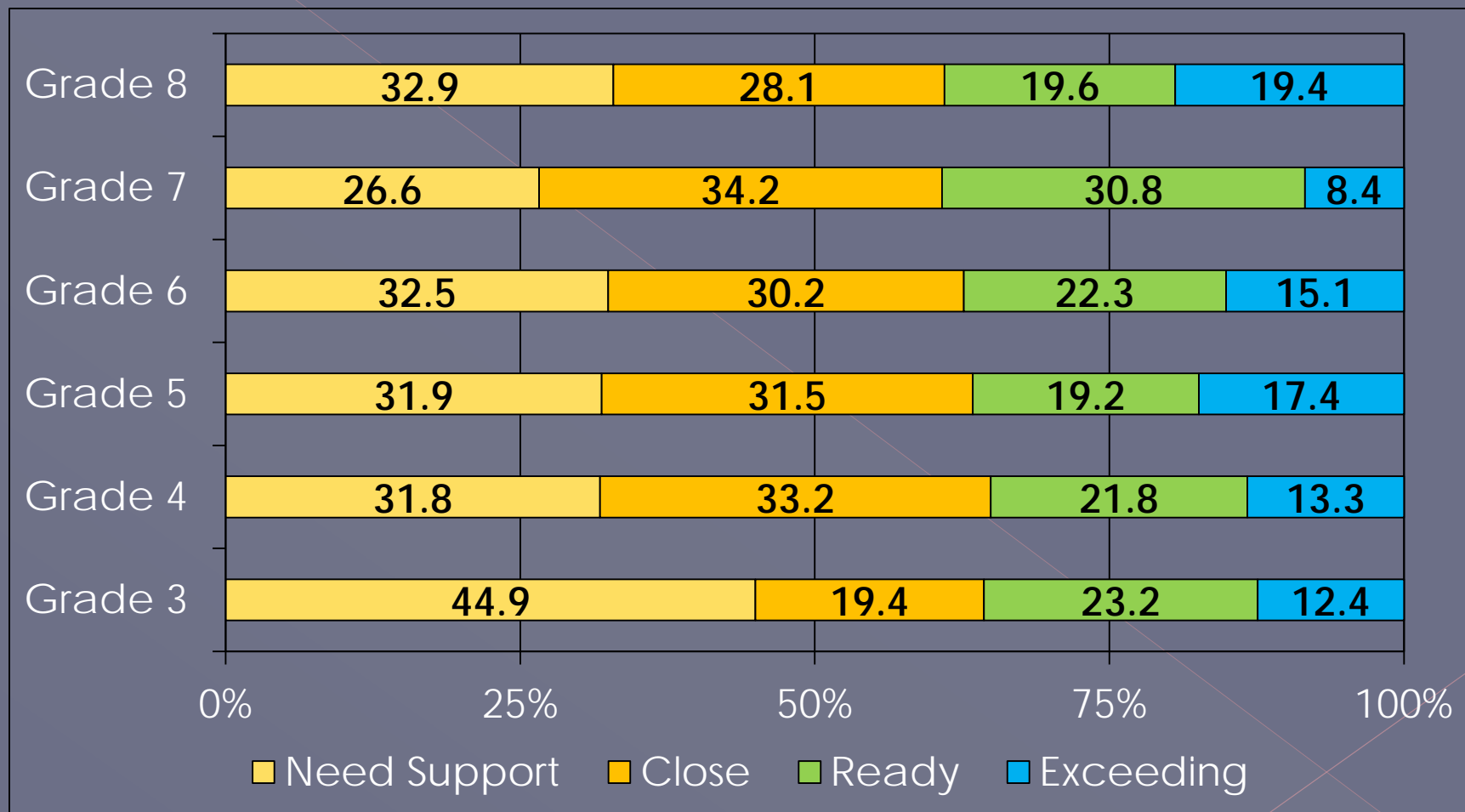
ACT Aspire: English

Percent Scoring at Each Level



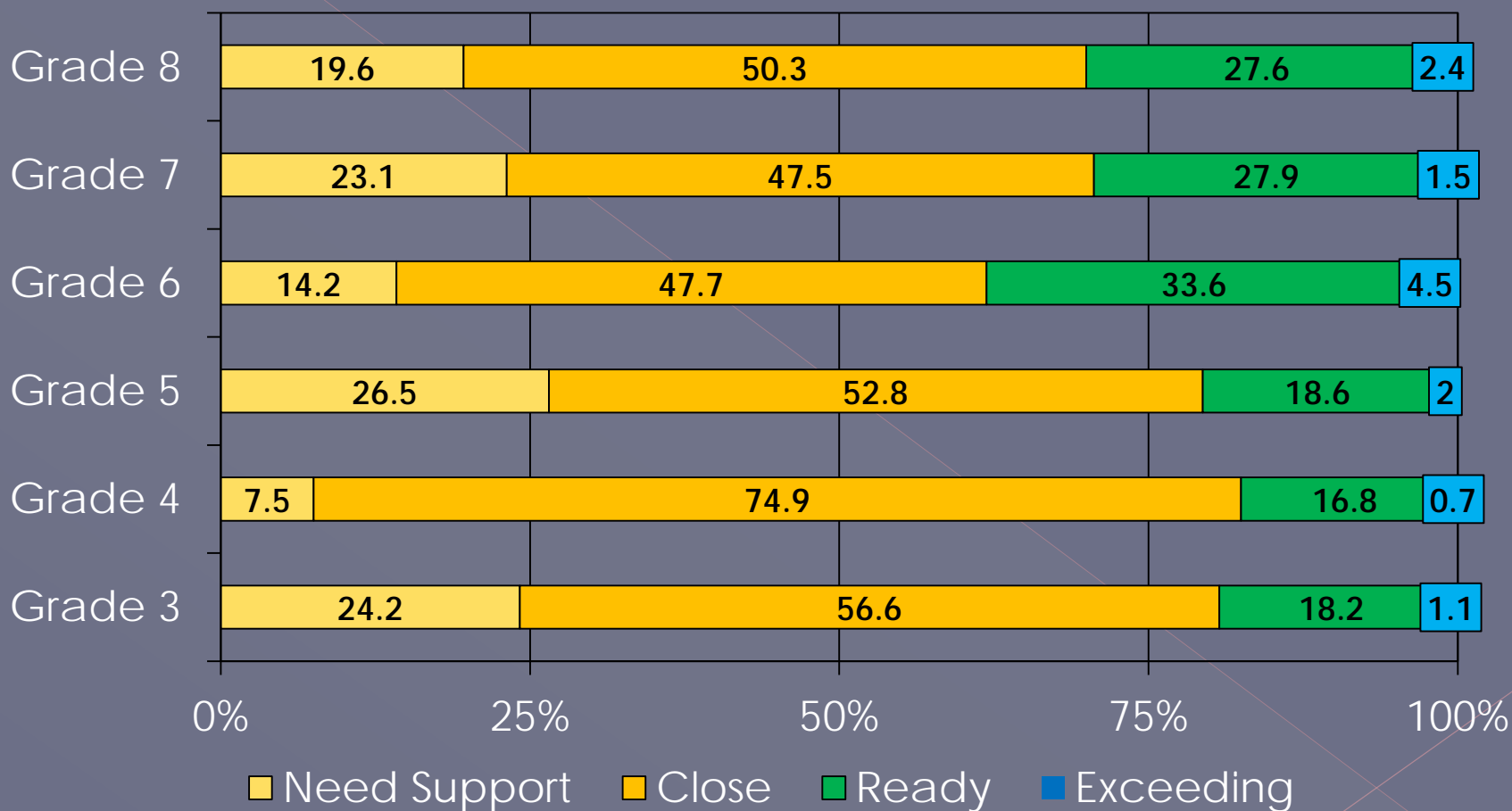
ACT Aspire: Reading

Percent Scoring at Each Level



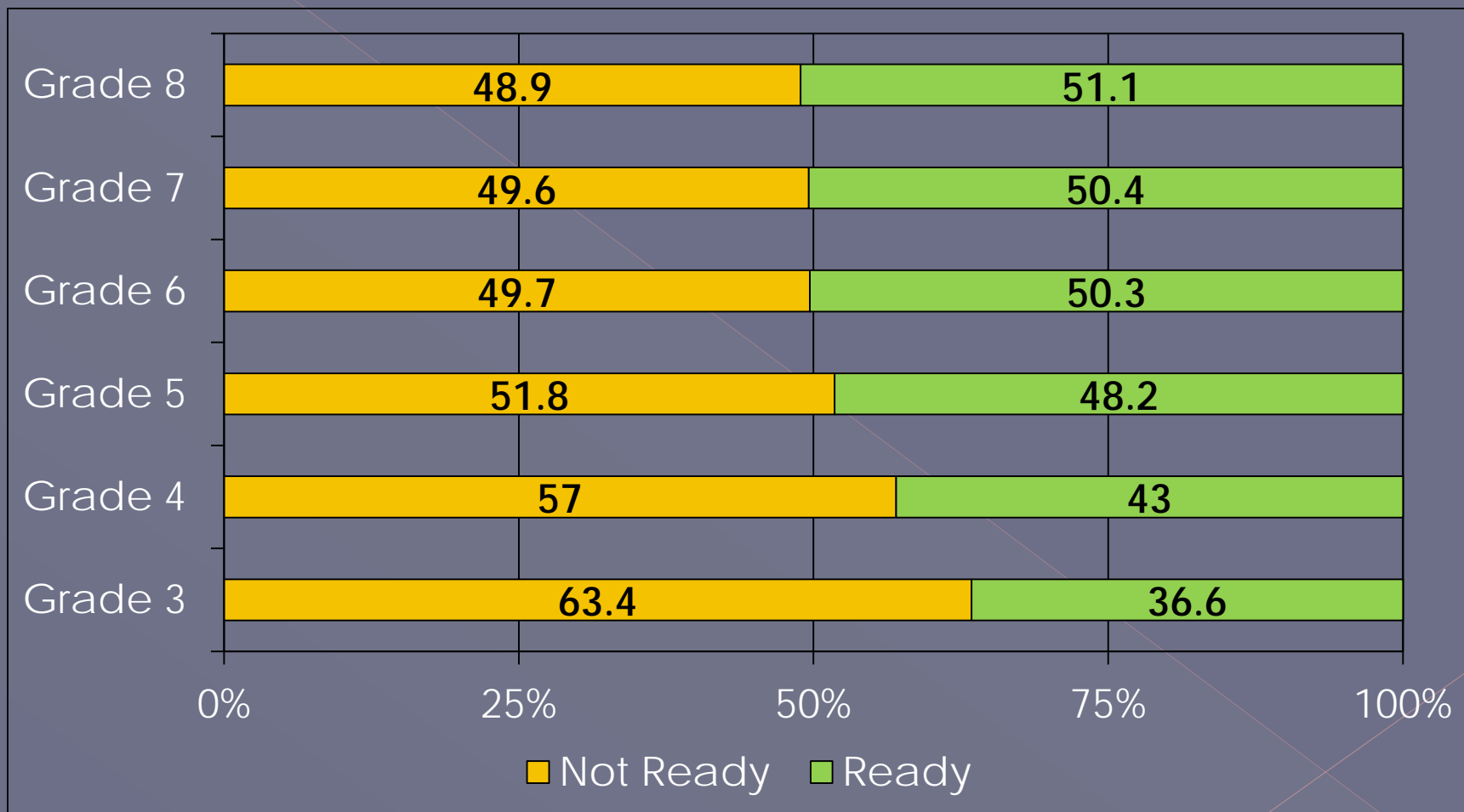
ACT Aspire: Writing

Percent Scoring at Each Level



ACT Aspire: Composite ELA

Percent Scoring at Each Level

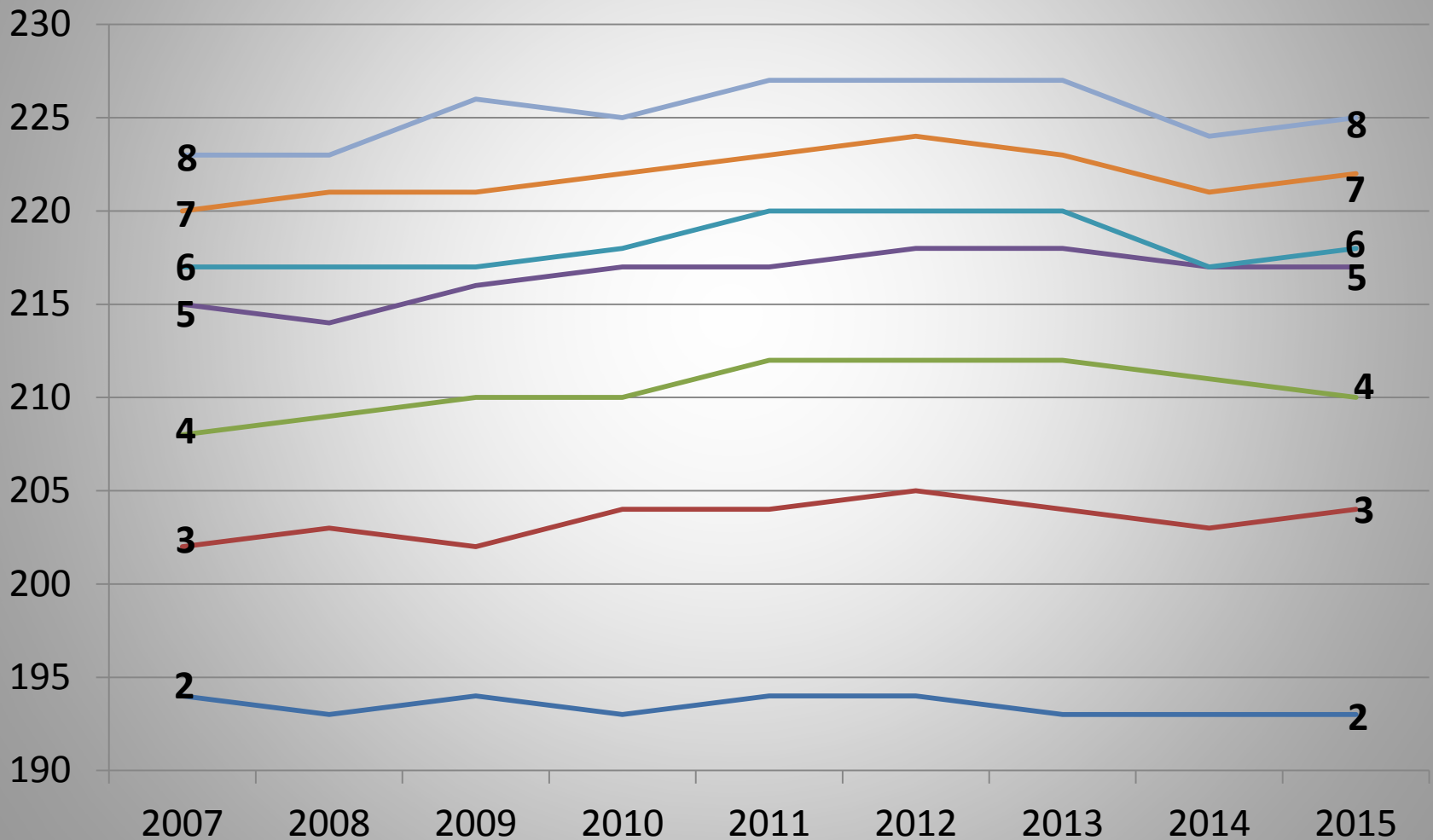


MAP

Reading and Language

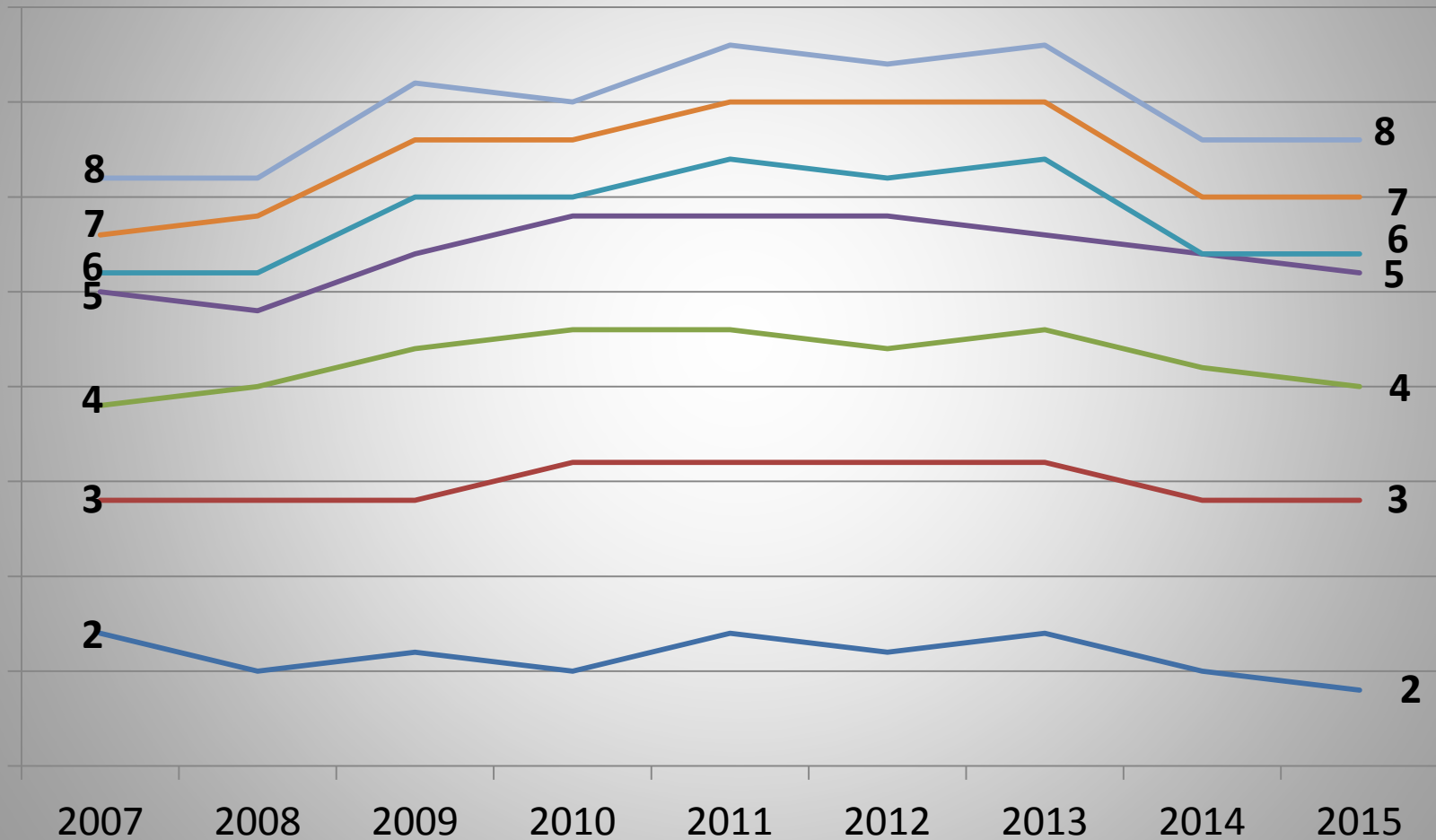
MAP Reading Scores Over Time

Spring Median RIT



MAP Language Scores Over Time

Spring Median RIT

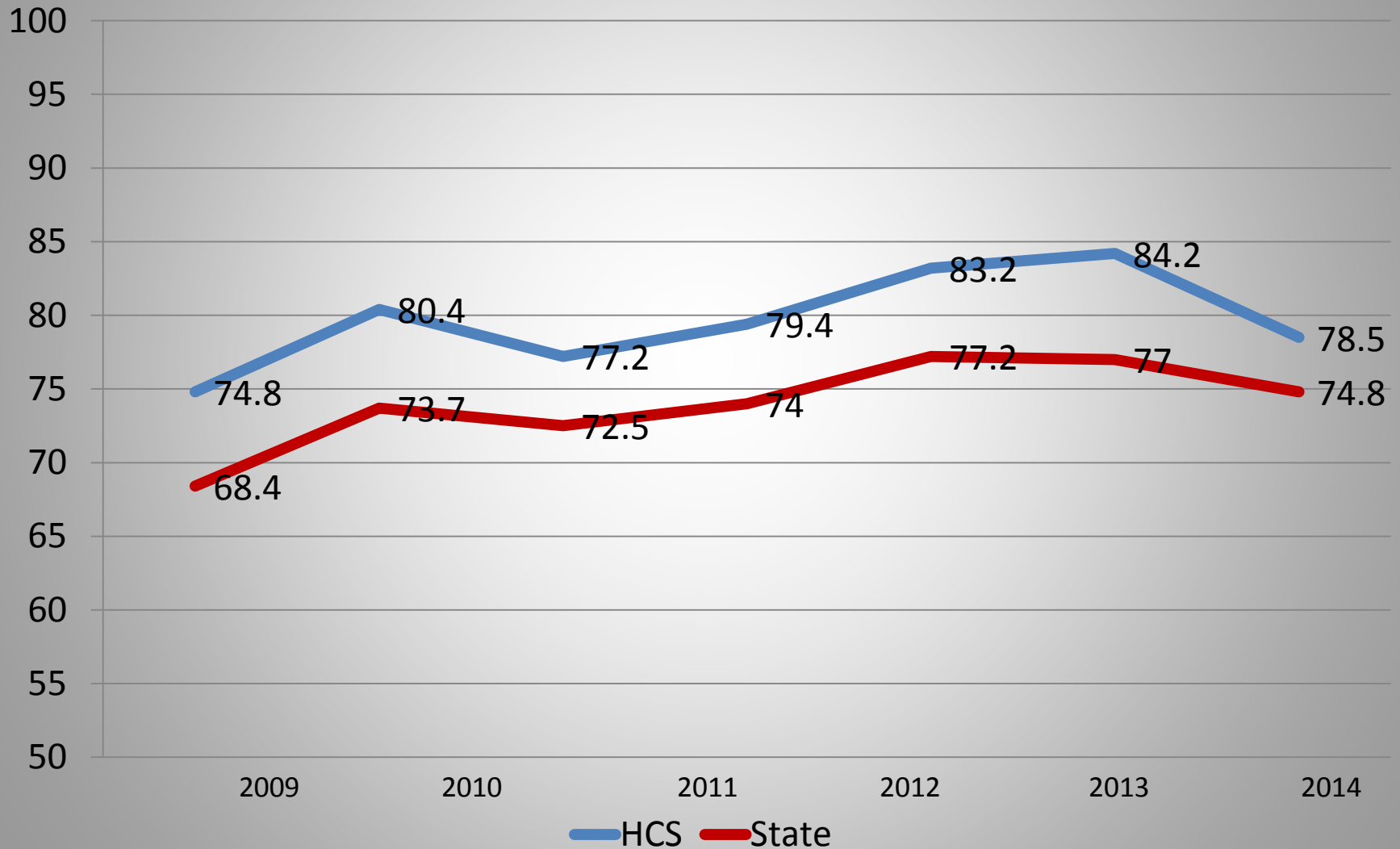


English I

End-of-Course Test

English I End-of-Course Test

% Passing



ACT

Grade 11, All Students

ACT for Grade 11 (Census Testing)

Average Score by Students, Spring 2015

