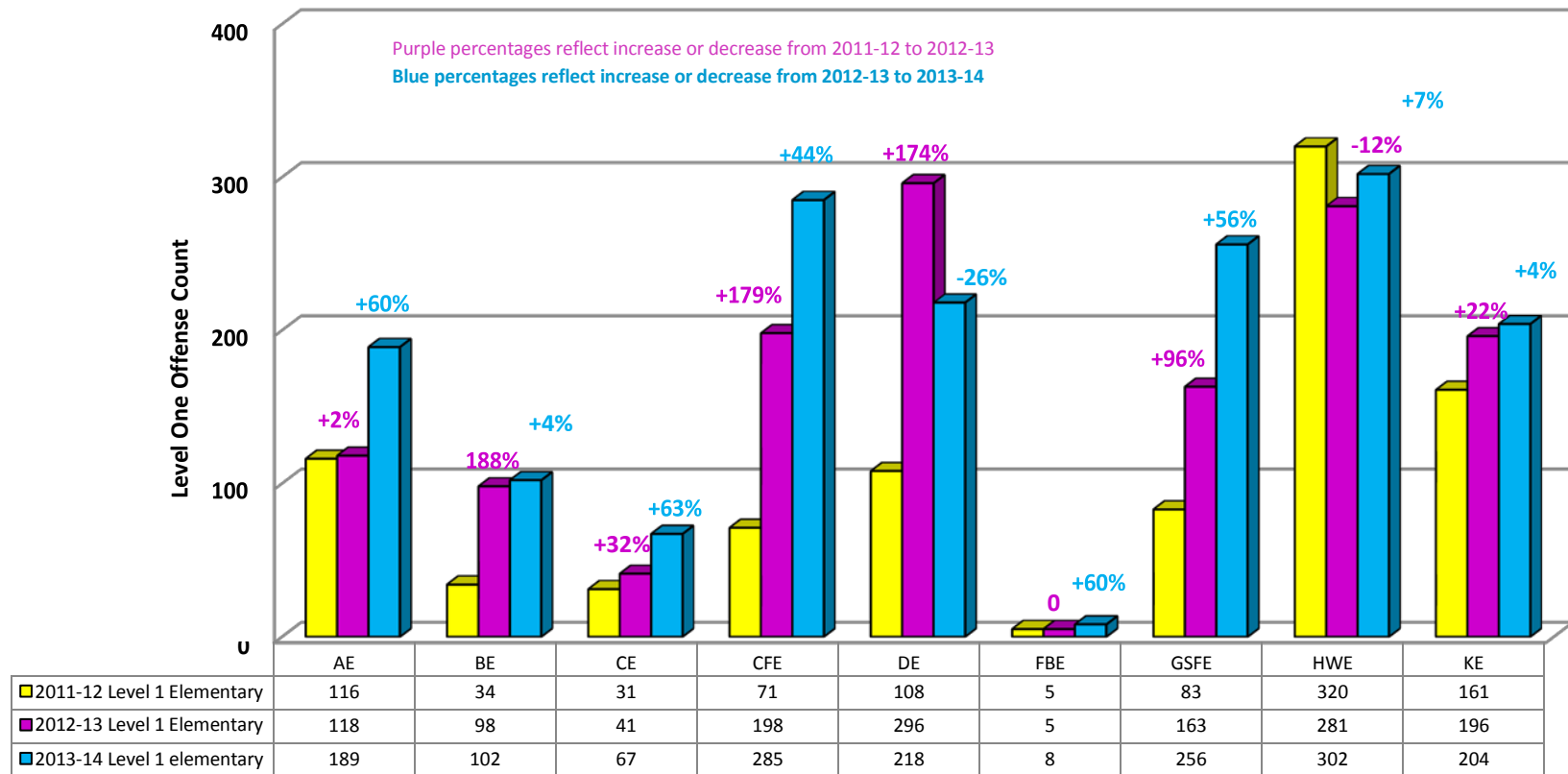
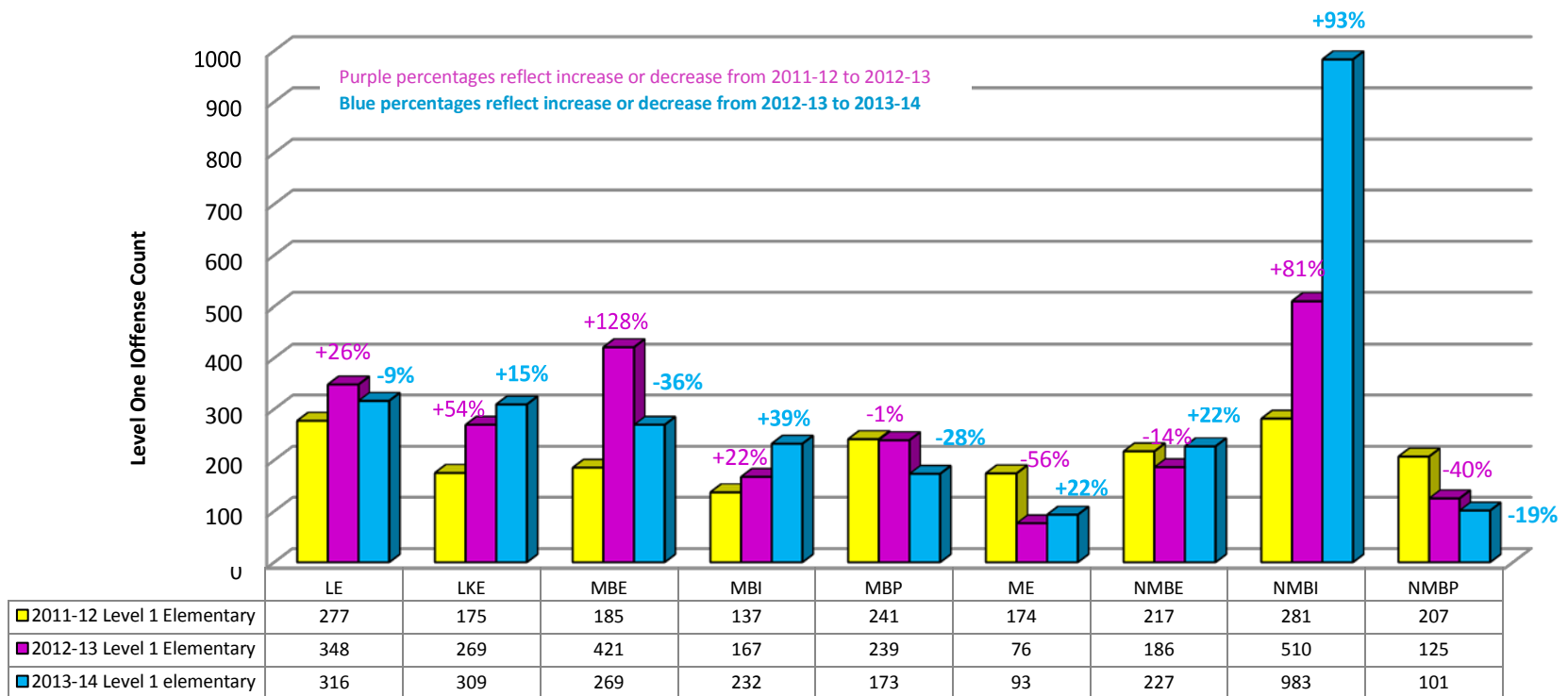


Elementary Schools Level One Offenses Three Year Comparison



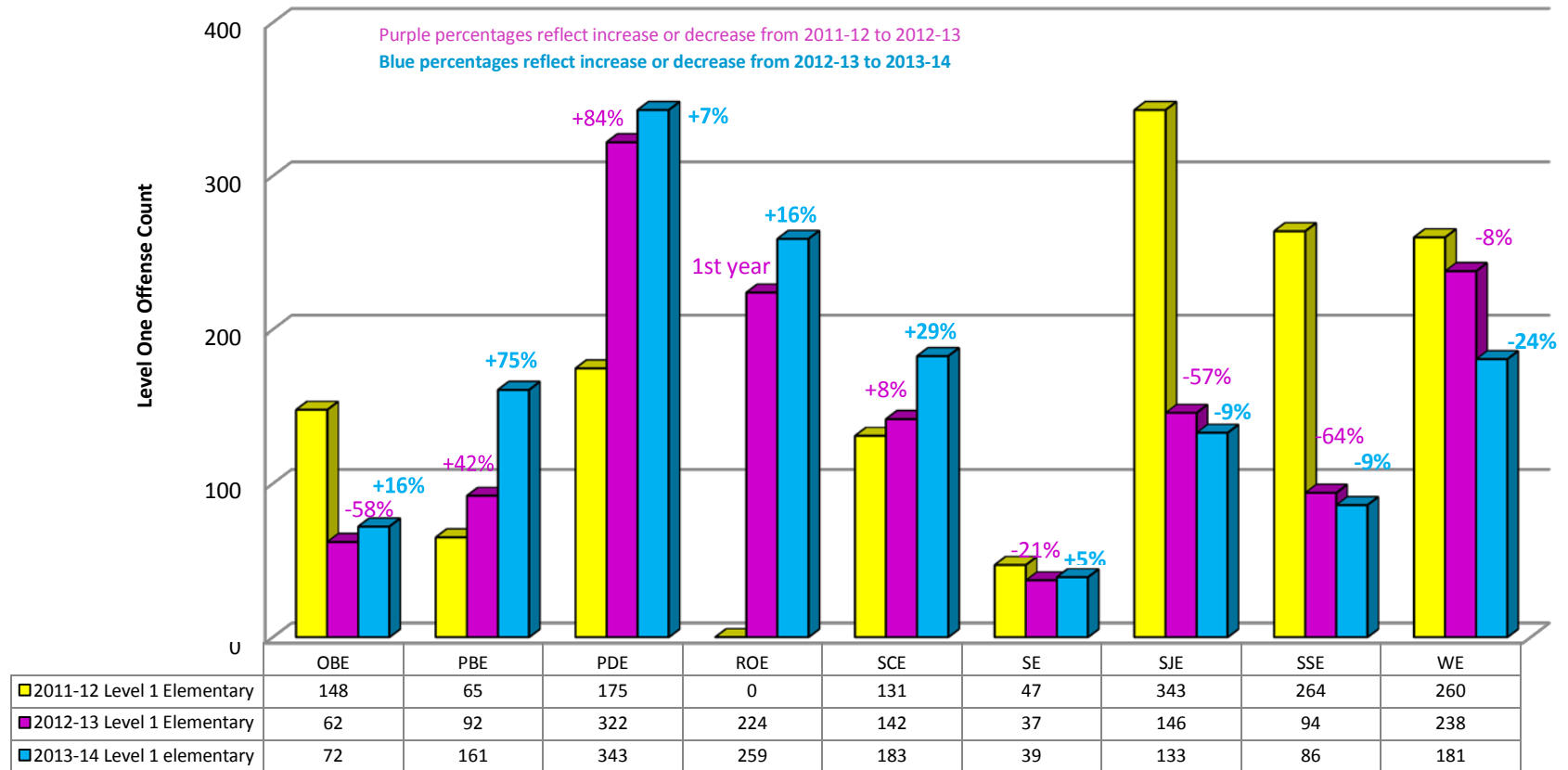
Level One Offenses: Detention Violation, Dishonesty, Disrupting Class, Forgery, Inappropriate Language, Inappropriate Behavior, Inappropriate Materials, No Form Returned, Property Misuse, Running, Throwing Objects, Violation of Class Rules, Cutting School, Cutting Class, Cutting Activity, Tardy to Class, Cheating, Off Limits, Profanity, Loitering, Failure to Comply With Disciplinary Action, Failure to Complete School Work, Dress Code, Obscene Gesture, Parking Violation, Driving Violation, Leaving School, Leaving Class, Phone Violation, ID Violation, Littering, Unauthorized Device, Excessive Noise, Horseplay, Hall Pass Violation, Contract Violation, Other Minor Offenses

Elementary Schools Level One Offenses Three Year Comparison



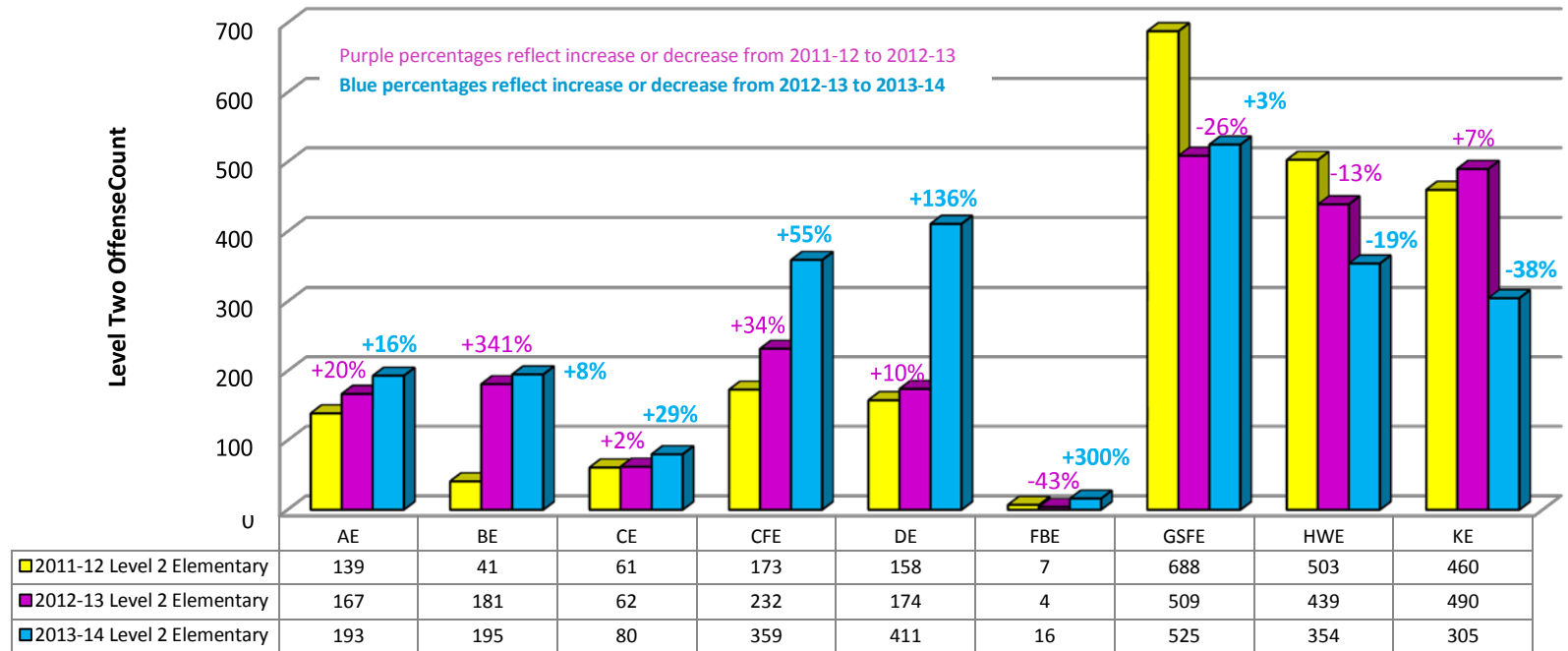
Level One Offenses: Detention Violation, Dishonesty, Disrupting Class, Forgery, Inappropriate Language, Inappropriate Behavior, Inappropriate Materials, No Form Returned, Property Misuse, Running, Throwing Objects, Violation of Class Rules, Cutting School, Cutting Class, Cutting Activity, Tardy to Class, Cheating, Off Limits, Profanity, Loitering, Failure to Comply With Disciplinary Action, Failure to Complete School Work, Dress Code, Obscene Gesture, Parking Violation, Driving Violation, Leaving School, Leaving Class, Phone Violation, ID Violation, Littering, Unauthorized Device, Excessive Noise, Horseplay, Hall Pass Violation, Contract Violation, Other Minor Offenses

Elementary Schools Level One Offenses Three Year Comparison



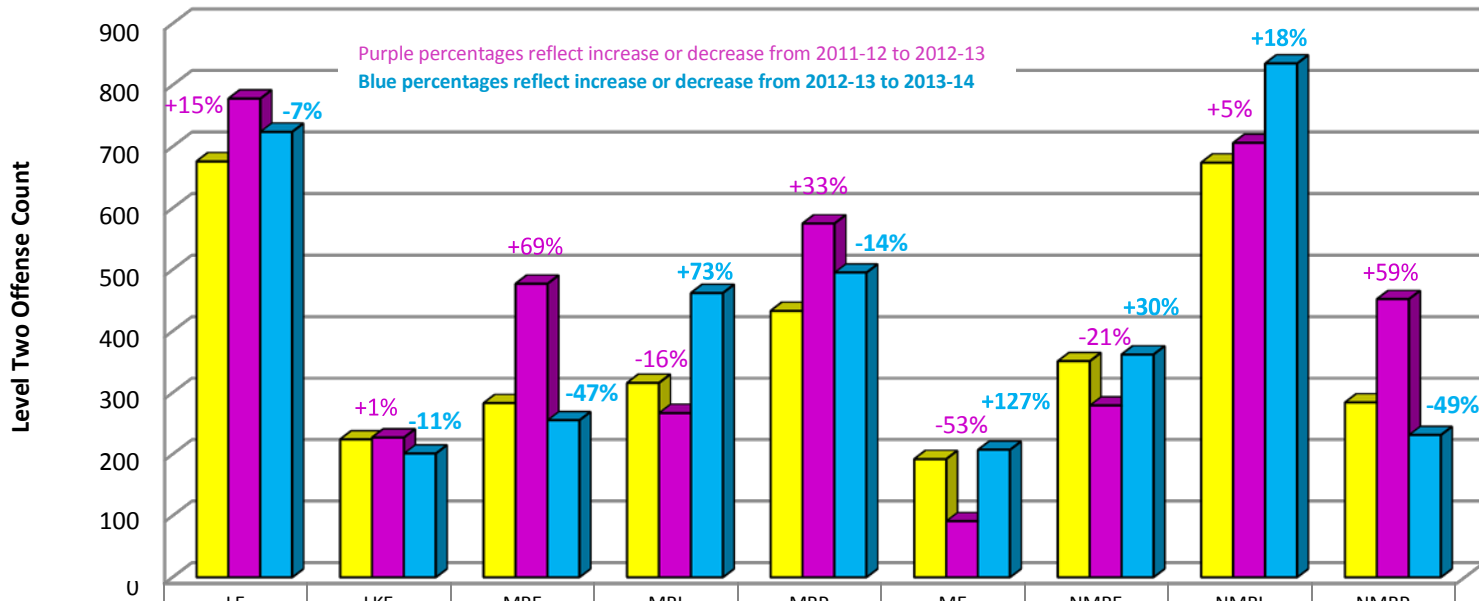
Level One Offenses: Detention Violation, Dishonesty, Disrupting Class, Forgery, Inappropriate Language, Inappropriate Behavior, Inappropriate Materials, No Form Returned, Property Misuse, Running, Throwing Objects, Violation of Class Rules, Cutting School, Cutting Class, Cutting Activity, Tardy to Class, Cheating, Off Limits, Profanity, Loitering, Failure to Comply With Disciplinary Action, Failure to Complete School Work, Dress Code, Obscene Gesture, Parking Violation, Driving Violation, Leaving School, Leaving Class, Phone Violation, ID Violation, Littering, Unauthorized Device, Excessive Noise, Horseplay, Hall Pass Violation, Contract Violation, Other Minor Offenses

Elementary Schools Level Two Offenses Three Year Comparison



Level 2 Offenses: Aiding Others, Contraband, Fireworks, Harassment, Sexual Harassment, Hit/Kick/Push, Inappropriate Affection, Indecent Exposure, Major Disruption, Inappropriate Physical Contact, Threat, Urination, Computer Violation, Tobacco, Refusal to Obey/Defiant, Bus Violation, Probation Violation, Confrontation/Altercation, Disrespect, Bullying, and Cyberbullying

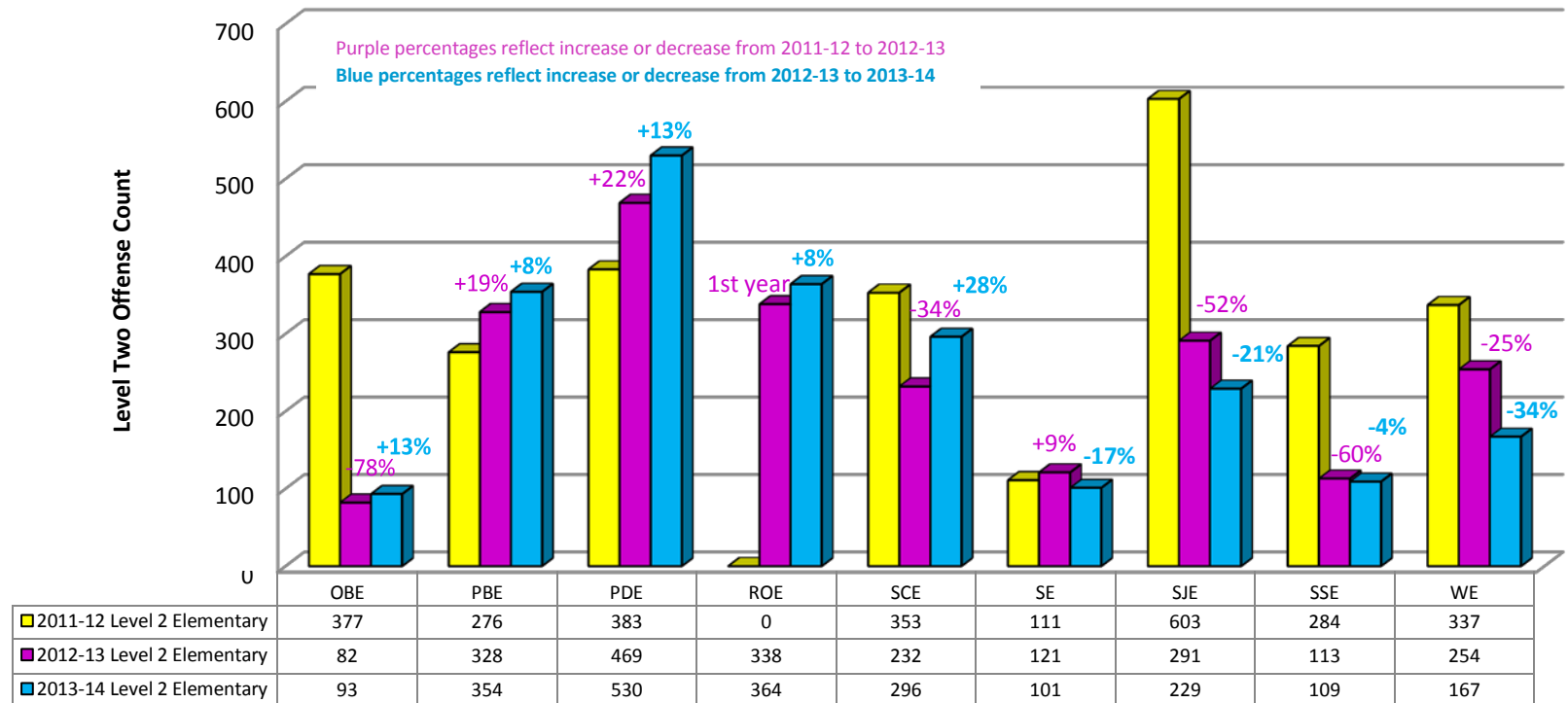
Elementary Schools Level Two Offenses Three Year Comparison



2011-12 Level 2 Elementary	676	224	283	316	433	192	351	674	284
2012-13 Level 2 Elementary	778	227	477	267	575	91	279	706	452
2013-14 Level 2 Elementary	724	201	255	462	495	207	362	835	231

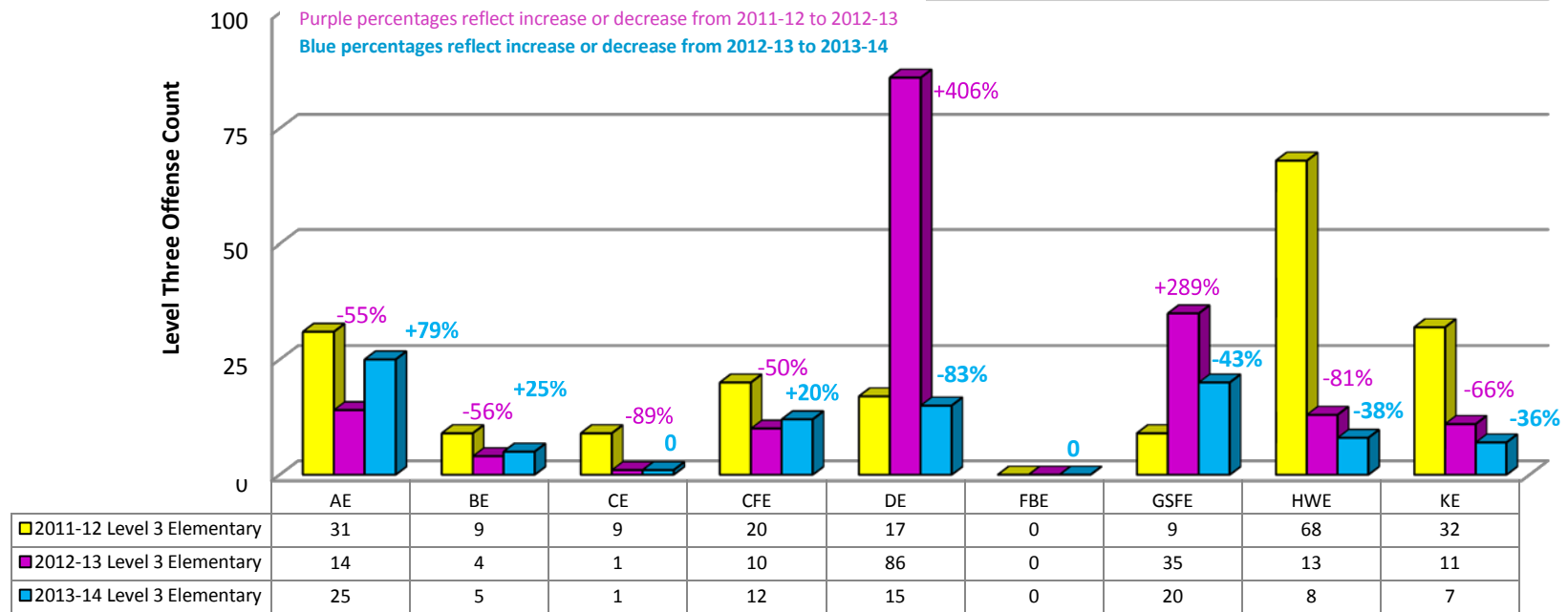
Level 2 Offenses: Aiding Others, Contraband, Fireworks, Harassment, Sexual Harassment, Hit/Kick/Push, Inappropriate Affection, Indecent Exposure, Major Disruption, Inappropriate Physical Contact, Threat, Urination, Computer Violation, Tobacco, Refusal to Obey/Defiant, Bus Violation, Probation Violation, Confrontation/Altercation, Disrespect, Bullying, and Cyberbullying

Elementary Schools Level Two Offenses Three Year Comparison



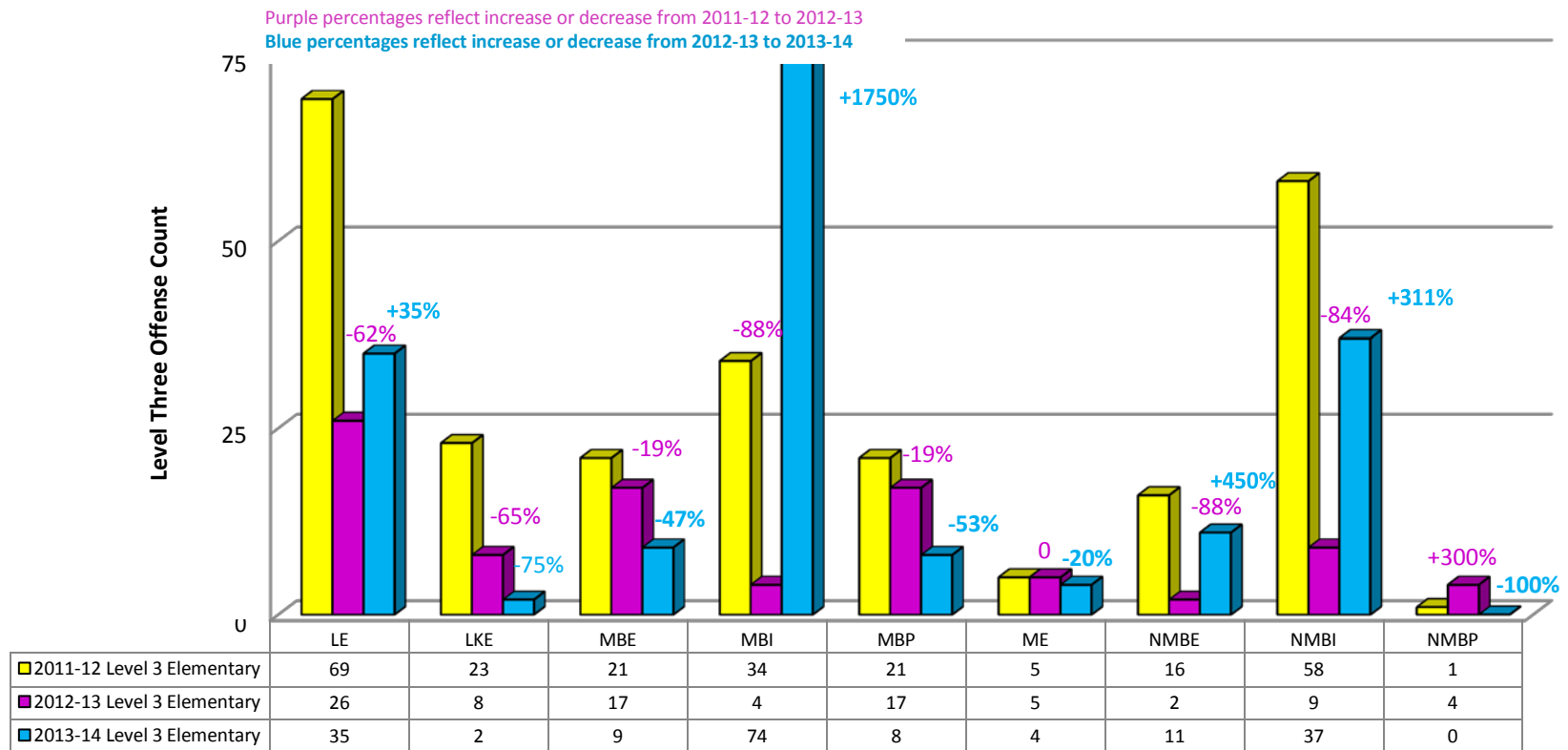
Level 2 Offenses: Aiding Others, Contraband, Fireworks, Harassment, Sexual Harassment, Hit/Kick/Push, Inappropriate Affection, Indecent Exposure, Major Disruption, Inappropriate Physical Contact, Threat, Urination, Computer Violation, Tobacco, Refusal to Obey/Defiant, Bus Violation, Probation Violation, Confrontation/Altercation, Disrespect, Bullying, and Cyberbullying

Elementary Schools Level Three Offenses Three Year Comparison



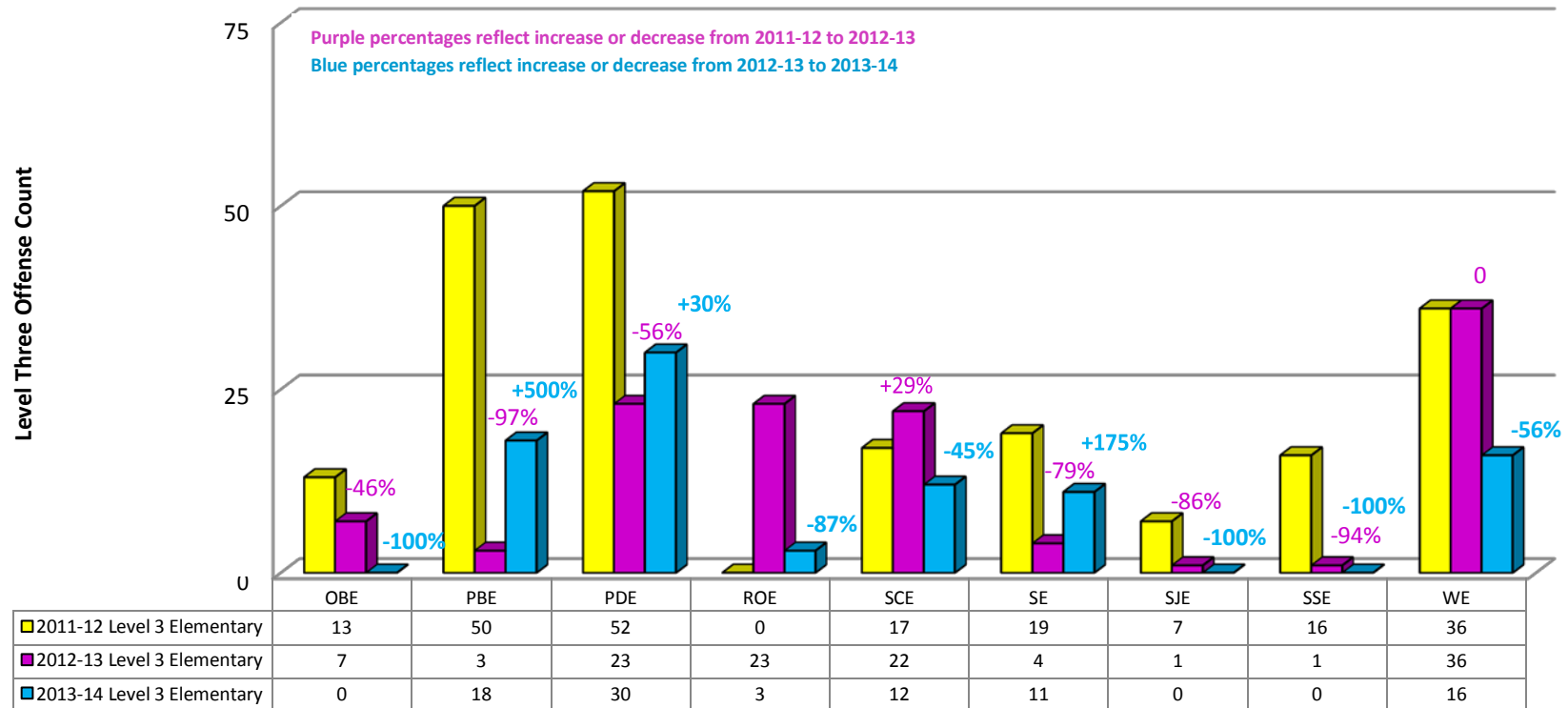
Level Three Offenses: Fighting, Gang Activity, Bomb Threat, Fire Alarm, Arson, Aggravated Assault, Simple Assault, Bribery, Burglary, Counterfeit/Forgery, Disturbing School, Drug Distribution, Drug Usage, Drug Possession, Embezzlement, Extortion, Forced Sexual Offense, Fraud, Gambling, Homicide, Intimidation, Kidnap/Abduction, Larceny/Theft, Alcohol/Liquor Law Violation, Non-Forced Sexual Offense, Pornography, Prostitution, Robbery, Stolen Property, Trespassing, Vandalism, Vehicle Theft, Weapons, and Other Serious Offenses

Elementary Schools Level Three Offenses Three Year Comparison



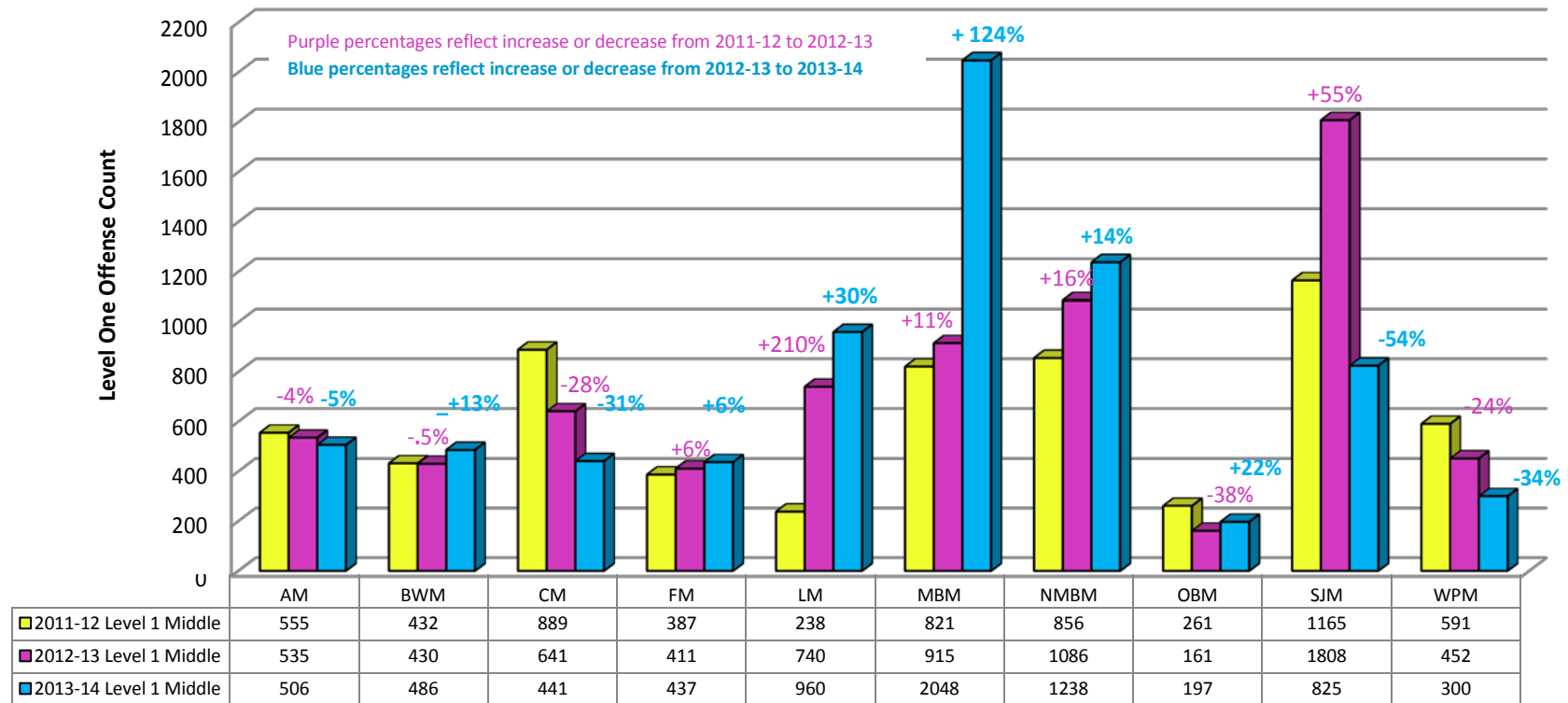
Level Three Offenses: Fighting, Gang Activity, Bomb Threat, Fire Alarm, Arson, Aggravated Assault, Simple Assault, Bribery, Burglary, Counterfeit/Forgery, Disturbing School, Drug Distribution, Drug Usage, Drug Possession, Embezzlement, Extortion, Forced Sexual Offense, Fraud, Gambling, Homicide, Intimidation, Kidnap/Abduction, Larceny/Theft, Alcohol/Liquor Law Violation, Non-Forced Sexual Offense, Pornography, Prostitution, Robbery, Stolen Property, Trespassing, Vandalism, Vehicle Theft, Weapons, and Other Serious Offenses

Elementary Schools Level Three Offenses Three Year Comparison



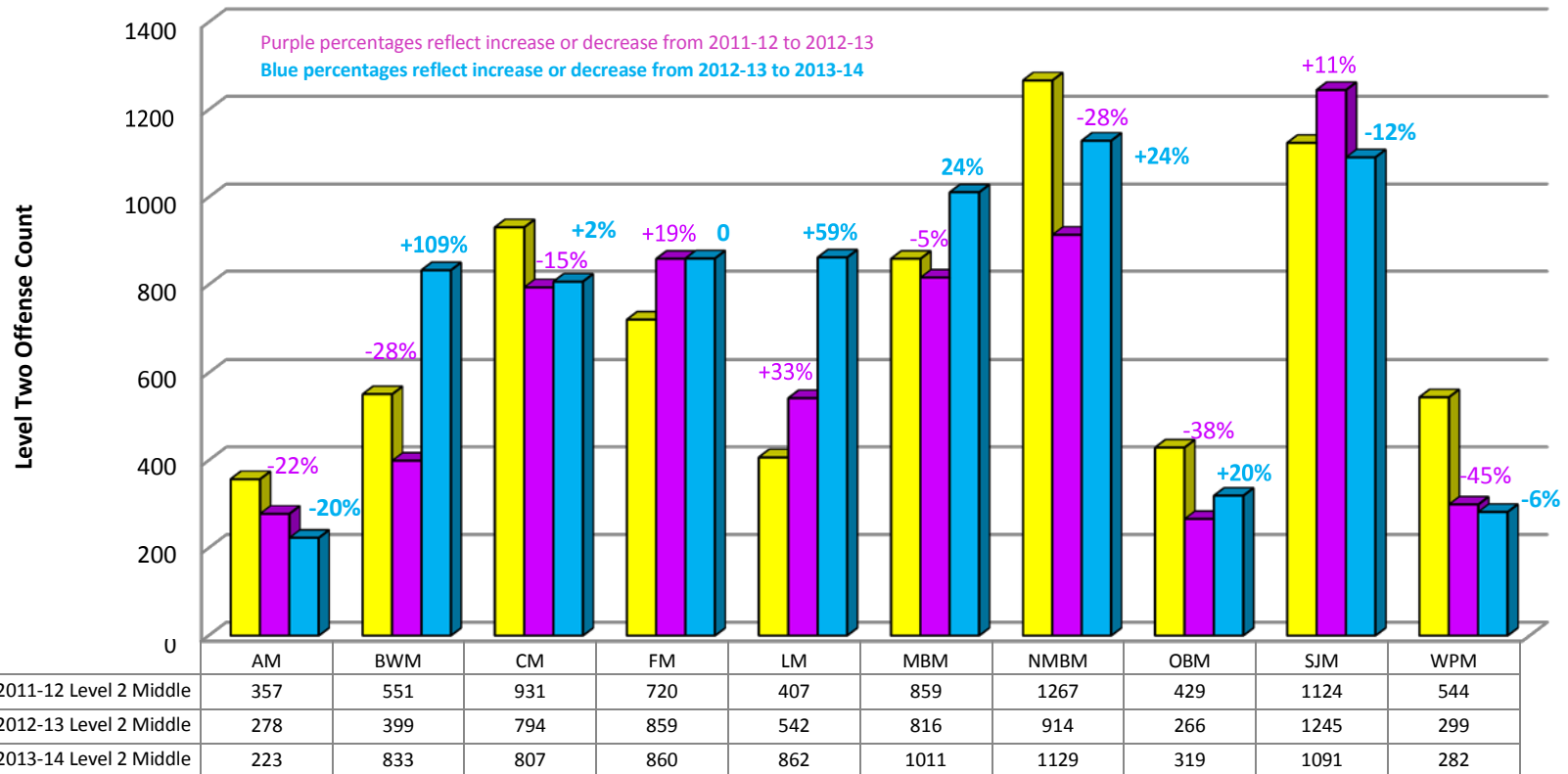
Level Three Offenses: Fighting, Gang Activity, Bomb Threat, Fire Alarm, Arson, Aggravated Assault, Simple Assault, Bribery, Burglary, Counterfeit/Forgery, Disturbing School, Drug Distribution, Drug Usage, Drug Possession, Embezzlement, Extortion, Forced Sexual Offense, Fraud, Gambling, Homicide, Intimidation, Kidnap/Abduction, Larceny/Theft, Alcohol/Liquor Law Violation, Non-Forced Sexual Offense, Pornography, Prostitution, Robbery, Stolen Property, Trespassing, Vandalism, Vehicle Theft, Weapons, and Other Serious Offenses

Middle Schools Level One Offenses Three Year Comparison



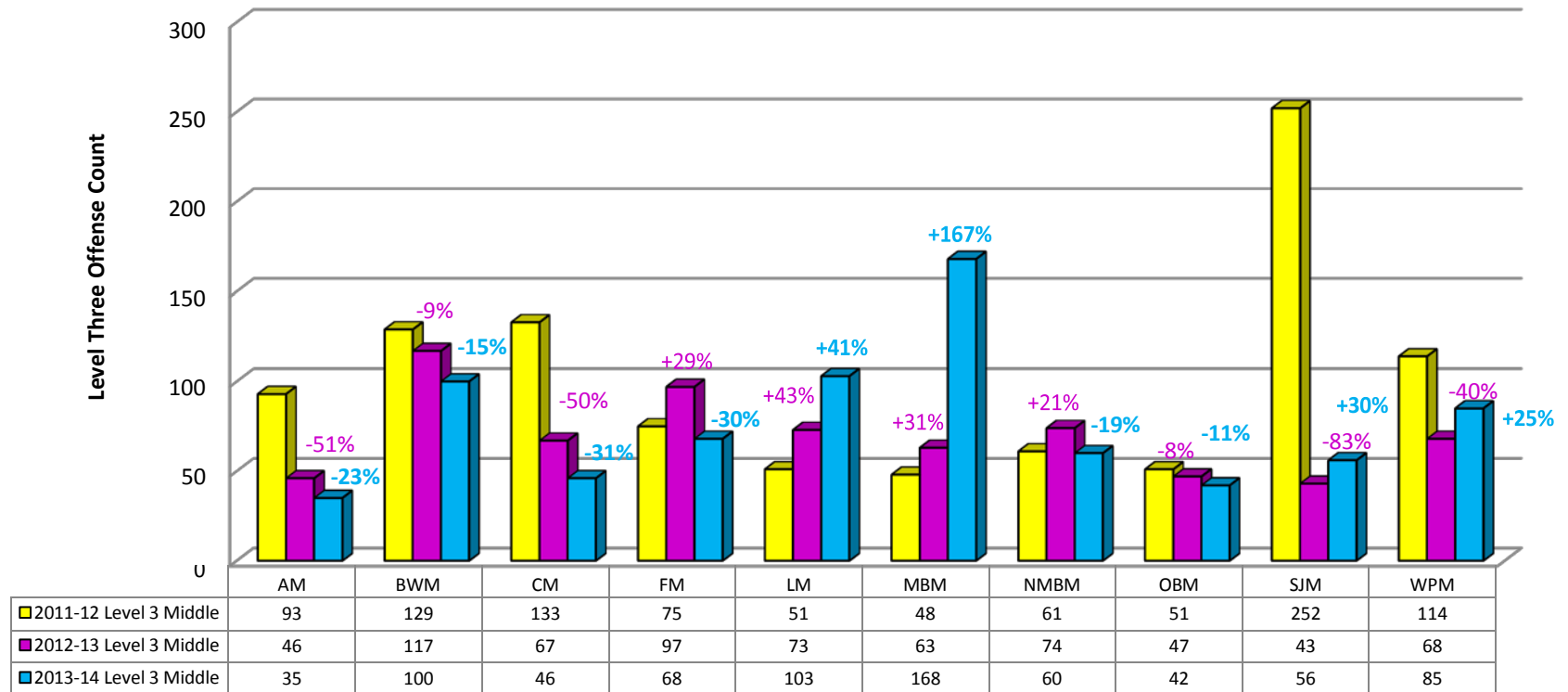
Level One Offenses: Detention Violation, Dishonesty, Disrupting Class, Forgery, Inappropriate Language, Inappropriate Behavior, Inappropriate Materials, No Form Returned, Property Misuse, Running, Throwing Objects, Violation of Class Rules, Cutting School, Cutting Class, Cutting Activity, Tardy to Class, Cheating, Off Limits, Profanity, Loitering, Failure to Comply With Disciplinary Action, Failure to Complete School Work, Dress Code, Obscene Gesture, Parking Violation, Driving Violation, Leaving School, Leaving Class, Phone Violation, ID Violation, Littering, Unauthorized Device, Excessive Noise, Horseplay, Hall Pass Violation, Contract Violation, and Other Minor Offenses

Middle Schools Level Two Offenses Three Year Comparison



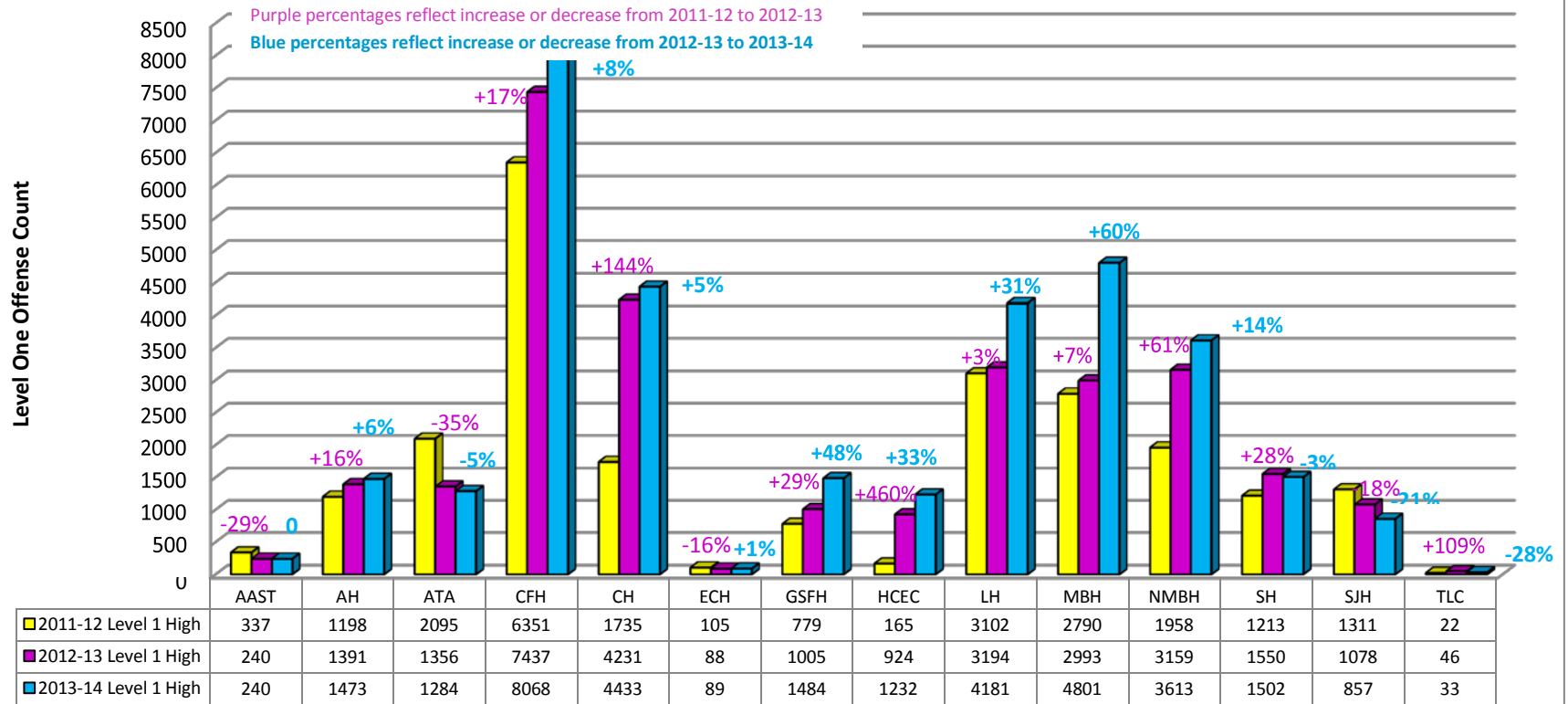
Level 2 Offenses: Aiding Others, Contraband, Fireworks, Harassment, Sexual Harassment, Hit/Kick/Push, Inappropriate Affection, Indecent Exposure, Major Disruption, Inappropriate Physical Contact, Threat, Urination, Computer Violation, Tobacco, Refusal to Obey/Defiant, Bus Violation, Probation Violation, Confrontation/Altercation, Disrespect, Bullying, and Cyberbullying

Middle Schools Level Three Offenses Three Year Comparison



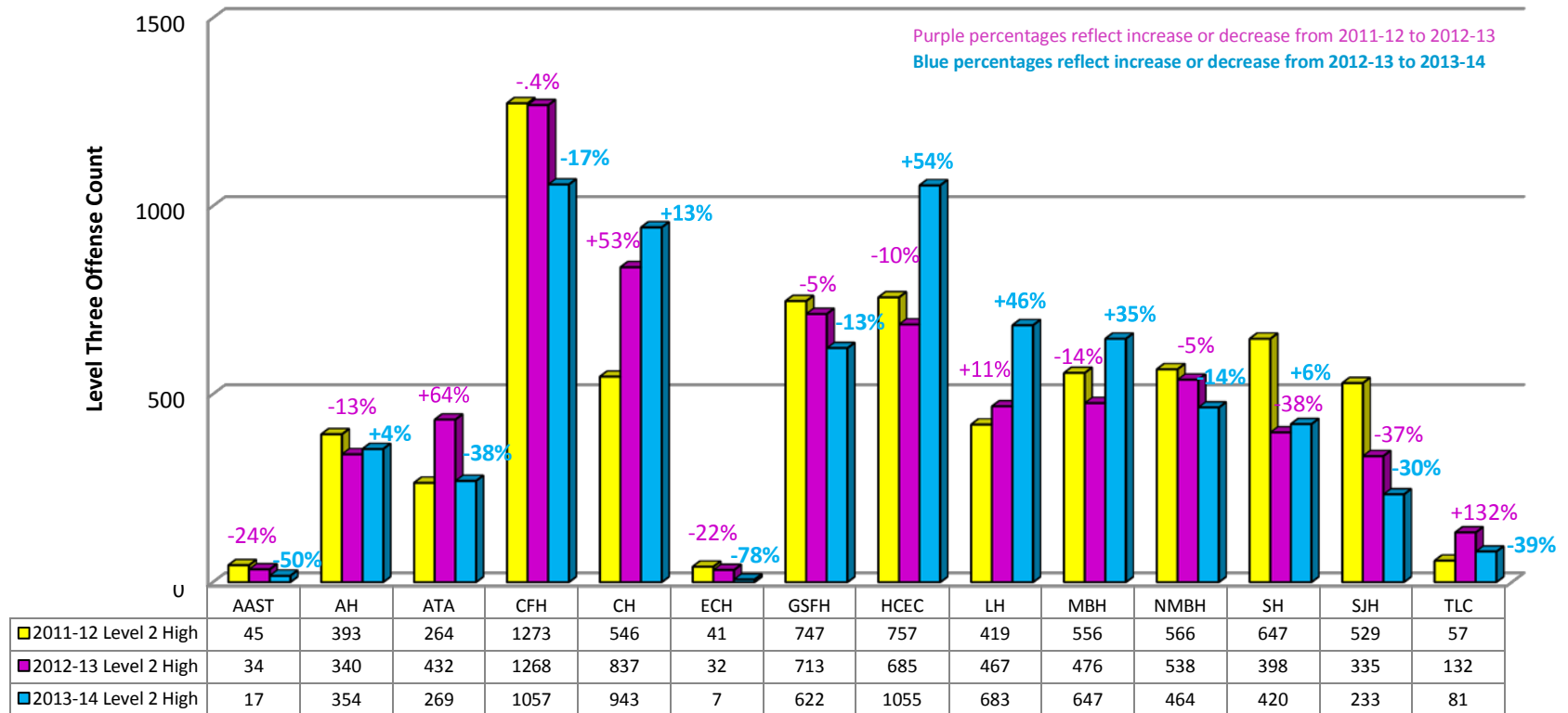
Level Three Offenses: Fighting, Gang Activity, Bomb Threat, Fire Alarm, Arson, Aggravated Assault, Simple Assault, Bribery, Burglary, Counterfeit/Forgery, Disturbing School, Drug Distribution, Drug Usage, Drug Possession, Embezzlement, Extortion, Forced Sexual Offense, Fraud, Gambling, Homicide, Intimidation, Kidnap/Abduction, Larceny/Theft, Alcohol/Liquor Law Violation, Non-Forced Sexual Offense, Pornography, Prostitution, Robbery, Stolen Property, Trespassing, Vandalism, Vehicle Theft, Weapons, and Other Serious Offenses

High Schools Level One Offenses Three Year Comparison



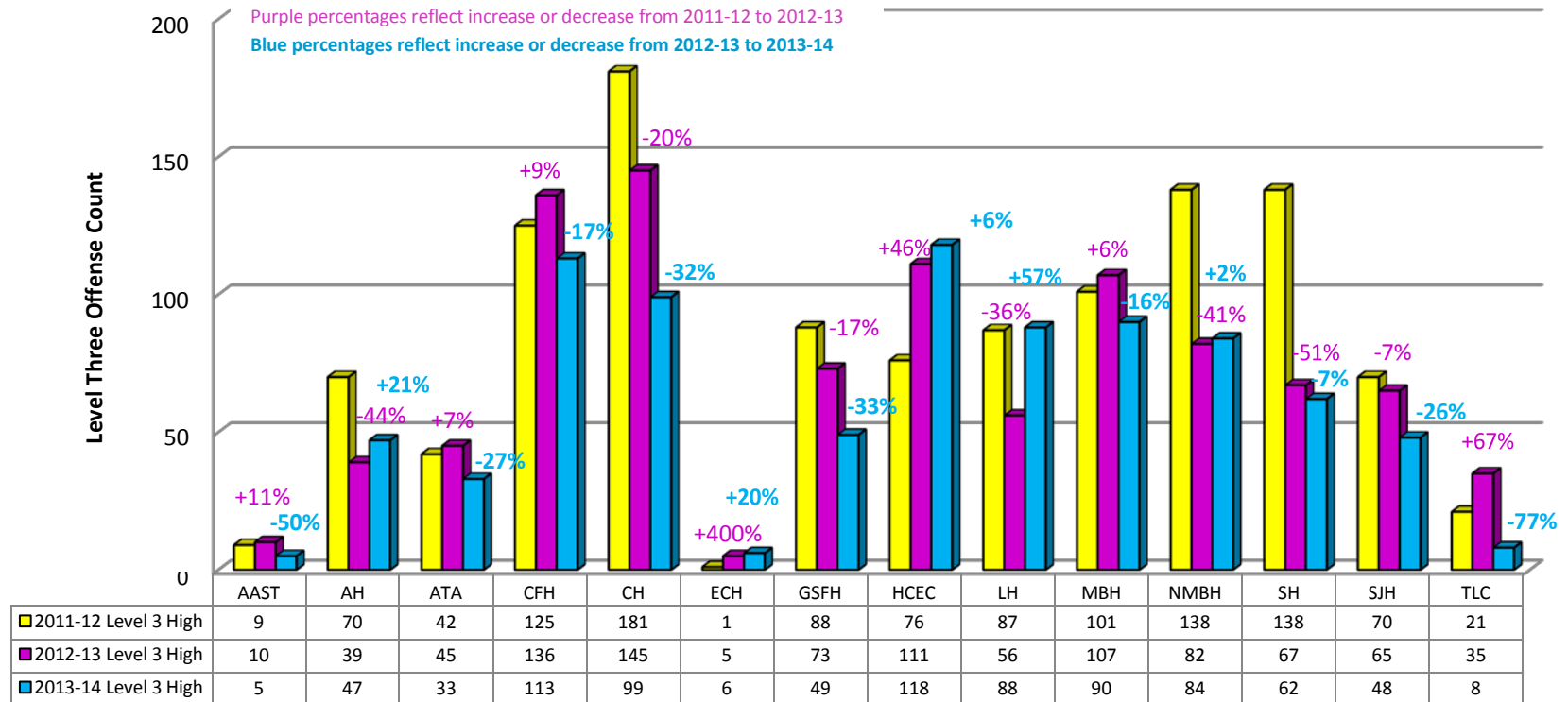
Level One Offenses: Detention Violation, Dishonesty, Disrupting Class, Forgery, Inappropriate Language, Inappropriate Behavior, Inappropriate Materials, No Form Returned, Property Misuse, Running, Throwing Objects, Violation of Class Rules, Cutting School, Cutting Class, Cutting Activity, Tardy to Class, Cheating, Off Limits, Profanity, Loitering, Failure to Comply With Disciplinary Action, Failure to Complete School Work, Dress Code, Obscene Gesture, Parking Violation, Driving Violation, Leaving School, Leaving Class, Phone Violation, ID Violation, Littering, Unauthorized Device, Excessive Noise, Horseplay, Hall Pass Violation, Contract Violation, Other Minor Offenses

High Schools Level Two Offenses Three Year Comparison



Level Two Offenses: Aiding Others, Contraband, Fireworks, Harassment, Sexual Harassment, Hit/Kick/Push, Inappropriate Affection, Indecent Exposure, Major Disruption, Inappropriate Physical Contact, Threat, Urination, Computer Violation, Tobacco, Refusal to Obey/Defiant, Bus Violation, Probation Violation, Confrontation/Altercation, Disrespect, Bullying, and Cyberbullying

High Schools Level Three Offenses Three Year Comparison



Level Three Offenses: Fighting, Gang Activity, Bomb Threat, Fire Alarm, Arson, Aggravated Assault, Simple Assault, Bribery, Burglary, Counterfeit/Forgery, Disturbing School, Drug Distribution, Drug Usage, Drug Possession, Embezzlement, Extortion, Forced Sexual Offense, Fraud, Gambling, Homicide, Intimidation, Kidnap/Abduction, Larceny/Theft, Alcohol/Liquor Law Violation, Non-Forced Sexual Offense, Pornography, Prostitution, Robbery, Stolen Property, Trespassing, Vandalism, Vehicle Theft, Weapons, and Other Serious Offenses

School Discipline Data Team

1. What is the discipline referral process at our school?
2. How is the referral process monitored?
3. What does our data say about student discipline at our school? Consider:
 - a. What patterns are noticeable in the data?
 - b. Are there any noticeable discrepancies in the data?
 - c. How does student discipline differ by demographics?
 - d. What is the longitudinal progress of a specific group/s of students?
 - e. What are the characteristics of students who have no disciplinary infractions compared to those who have infractions?
 - f. What are the most frequent behaviors associated with the majority of students given ISS? OSS?
 - g. Identify the habitual offenders who have committed 10 or more offenses.
4. What are the possible contributing factors? Consider:
 - a. Have there been changes in the discipline referral process?
 - b. Have there been any environmental changes in the school which might contribute to the change in discipline referrals?
 - c. Which teachers refer the most students? Which teachers refer the fewest students? What are the differences in the classroom environments of these teachers?
5. How will these results and discussions be used to make positive behavioral changes? Consider:
 - a. What issues have been raised about classroom management and school-wide discipline policies?
 - b. What is the first step to increase student success in following school rules?
 - c. What are the next steps this group should take?
 - d. Is there other data or material we should look at?
 - e. How will we know if student behavior is improving as a result of these changes?
6. Other Information

Repeat Offenders 2013-14

The following conditions apply to this report:

- **Incidents are classified at the school where they happened by the student(s) who committed the incident.**
- **This is not an un-duplicated student count.**
- **This is not an unduplicated incident list. Two students may have committed one incident, but for this report each student would be counted as the offender for the incident.**
- **If a student transferred schools during the school year, that student may have committed incidents and incidents counted at more than one school.**
- **Student(s) who committed incidents may no longer be enrolled in Horry County Schools.**
- **The enrollment figures are from the 135th day report.**
- **Students in program schools (AAST, ATA, SA, TLC, HCEC) are coded back to their base school.**
- **135th ADM count does not include students in PK-SC or CD students.**

Repeat Offenders

School	135th day ADM	# of offenders with 5 and fewer offenses	# of offenders with 6 to 10 offenses	# of offenders with 11 to 15 offenses	# of offenders with 11 to 16 offenses
AE	674	190	13	4	1
BE	696	183	7	0	0
CE	612	219	1	0	0
CFE	872	200	9	7	1
DE	612	260	17	4	2
FBE	924	95	4	1	1
GSFE	571	175	29	9	1
HWE	577	203	12	7	2
KE	592	110	13	2	2
LE	662	185	29	10	4
LKE	871	119	9	4	0
MBE	684	125	10	1	1
MBI	683	126	23	5	2
MBP	741	198	19	8	2
ME	512	98	9	2	0
NMBE	699	96	7	2	0
NMBI	674	249	32	17	12
NMBP	720	144	7	1	0
OBE	632	45	1	2	0
PBE	550	139	9	0	0
PDE	709	153	23	9	4
ROE	677	152	11	3	4
SCE	541	133	15	3	1
SE	667	87	3	0	0
SJE	857	65	6	3	0
SSE	670	35	5	1	1
WE	755	143	8	4	1
Elementary School Total	18434	3927	331	109	42

Repeat Offenders

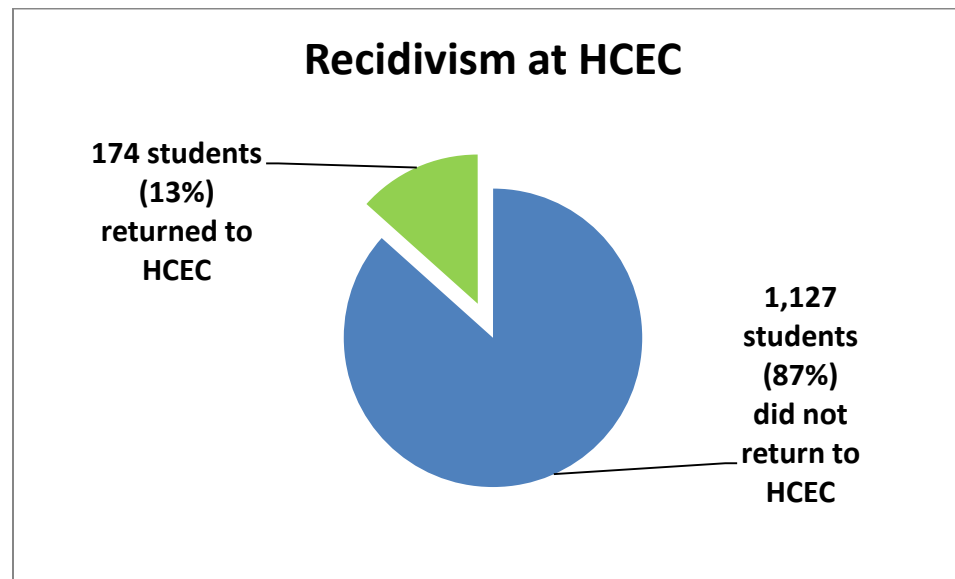
School	135th day ADM	# of offenders with 5 and fewer offenses	# of offenders with 6 to 10 offenses	# of offenders with 11 to 15 offenses	# of offenders with 11 to 16 offenses
AM	637	244	26	9	2
BWM	755	329	40	16	15
CM	613	346	45	9	8
FM	1094	350	29	8	4
LM	727	258	55	28	15
MBM	1050	355	98	42	44
NMBM	1092	321	79	40	29
OBM	1198	197	22	4	5
SJM	1175	298	58	21	7
WPM	648	159	25	9	6
Middle School Total	8989	2857	477	186	135
AH	793	374	85	21	13
CFH	2041	1096	318	143	126
CH	1496	770	180	76	59
ECH	359	105	2	0	0
GSFH	596	285	81	30	25
LH	778	376	165	61	68
MBH	1199	604	217	65	60
NMBH	1282	683	175	70	29
SH	1520	558	60	19	11
SJH	1429	378	35	12	5
High School Total	11493	5229	1318	497	396

Recidivism at HCEC

Three Year Data

For purposes of this report, data were collected using the following conditions:

- School years 2011-12, 2012-13, and 2013-14 were used.
- Students who were initially assigned to HCEC by a hearing officer during these three years were counted.
- Students who returned to their base school and were assigned one or more additional times to HCEC by a hearing officer during these three years were counted as students who “returned to HCEC.”



Intervention Services for Students -- Horry County Schools

SCHOOL	Covey	Olweus	Quaglia	RBHS	PBIS	WCMH
Acad. for Arts, Sci.,Tech						
Acad. for Tech. & Acad.				X		
Early College				X		
Horry County Educ Cntr*				X		
Scholars Academy						
Conway Education Center						
Therapeutic Lrn Center				X		
Aynor High				X		
Carolina Forest High				2014-15		X
Conway High			X	X		X
Green Sea Floyds Middle/High				2014-15		X
Loris High				X		
Myrtle Beach High	X			X		X
N. Myrtle Beach High				2014-15		X
Socastee High						X
St. James High				2014-15		X
Aynor Middle						
Black Water Middle				X		
Conway Middle			X			
Forestbrook Middle				2014-15		
Loris Middle				X		
Myrtle Beach Middle	X			X		X
N. Myrtle Beach Middle				X		
Ocean Bay Middle						
St. James Middle				X		
Whittemore Park Middle			X	X	X	
Aynor Elementary						
Burgess Elementary						
Carolina Forest Elementary						
Conway Elementary			X	X		
Daisy Elementary				X		X
Forestbrook Elementary				X		
Green Sea Floyds Elem				X	X	X
Homewood Elementary			X			X
Kingston Elementary			X			
Lakewood Elementary						
Loris Elementary		X		X		
Midland Elementary						
Myrtle Beach Elementary	X				X	X
Myrtle Beach Interm	X			X		X
Myrtle Beach Primary	X					
Ocean Bay Elementary						
Ocean Drive Elementary				X		
Palmetto Bays Elementary						
Pee Dee Elementary			X			
River Oaks Elementary				X		
Riverside Elementary				X		
Seaside Elementary						
Socastee Elementary						
South Conway Elementary			X	X		
St. James Elementary				X		
Waccamaw Elementary					X	X
Waterway Elementary				2014-15		X

**Rehabilitative Behavioral Health Services
2013-2014 School Year**

School	# Students Served
Academy for Technology and Academics	51
Aynor High	42
Black Water Middle	63
Conway Elementary	5
Conway High	48
Daisy Elementary	31
Early College High	20
Forestbrook Elementary	28
Green Sea Floyds Elementary	31
Horry County Education Center	122
Loris Elementary	36
Loris High	45
Loris Middle	50
Myrtle Beach High	32
Myrtle Beach Intermediate	31
Myrtle Beach Middle	42
North Myrtle Beach Elementary	20
North Myrtle Beach Middle	39
North Myrtle Beach Primary	35
South Conway Elementary	28
St. James Elementary	44
St. James Middle	57
Therapeutic Learning Center	51
Whittemore Park Middle	50
TOTAL STUDENTS SERVED	1001
SERVICES PROVIDED THROUGH RBHS: Screening/Assessment Behavior Modification Crisis Management Family Support Rehabilitative Psychosocial Services Therapy (Group/Individual/Family)	

Waccamaw Center for Mental Health
School-Based Services Program

Number of Students Served at Each School Site (7/1/2013 – 6/30/2014)

Schools	Number of students served
Carolina Forest High School	73
Conway High School	82
St. James High School	64
Homewood Elementary School	56
Daisy Elementary School	60
North Myrtle Beach Intermediate School	47
Socastee High School	63
Socastee Elementary School (until 11/2013)	7
Waccamaw Elementary School	56
North Myrtle Beach High School (started 4/2014)	10
Myrtle Beach Middle School	58
Myrtle Beach High School	48
Myrtle Beach Intermediate School	17
Myrtle Beach Elementary School	17
Green Sea Floyds High School	52
Green Sea Floyds Elementary School	27
Total	737