

**HORRY COUNTY SCHOOLS
MONITORING REPORT – OE-11
Discipline**

I certify that the information in this report is true.

Signed: _____ Date: _____
Cindy Elsberry, Superintendent

Disposition of the Board:
 In compliance
 Not in compliance
 Compliance with exception

Signed: _____ Date: _____
Joe Defeo, Board Chair

Comments: _____

	Supt	Supt	Bd	Bd
	In compliance	Not in compliance	In compliance	Not in compliance
OE-11 – The superintendent shall establish and consistently enforce discipline policies to maintain safe and effective environments for all students.	✓			

Interpretation: *I interpret this policy to mean that the District will develop a discipline policy that promotes a safe and orderly environment for all students. The policy will outline consequences for persons that break established rules.*

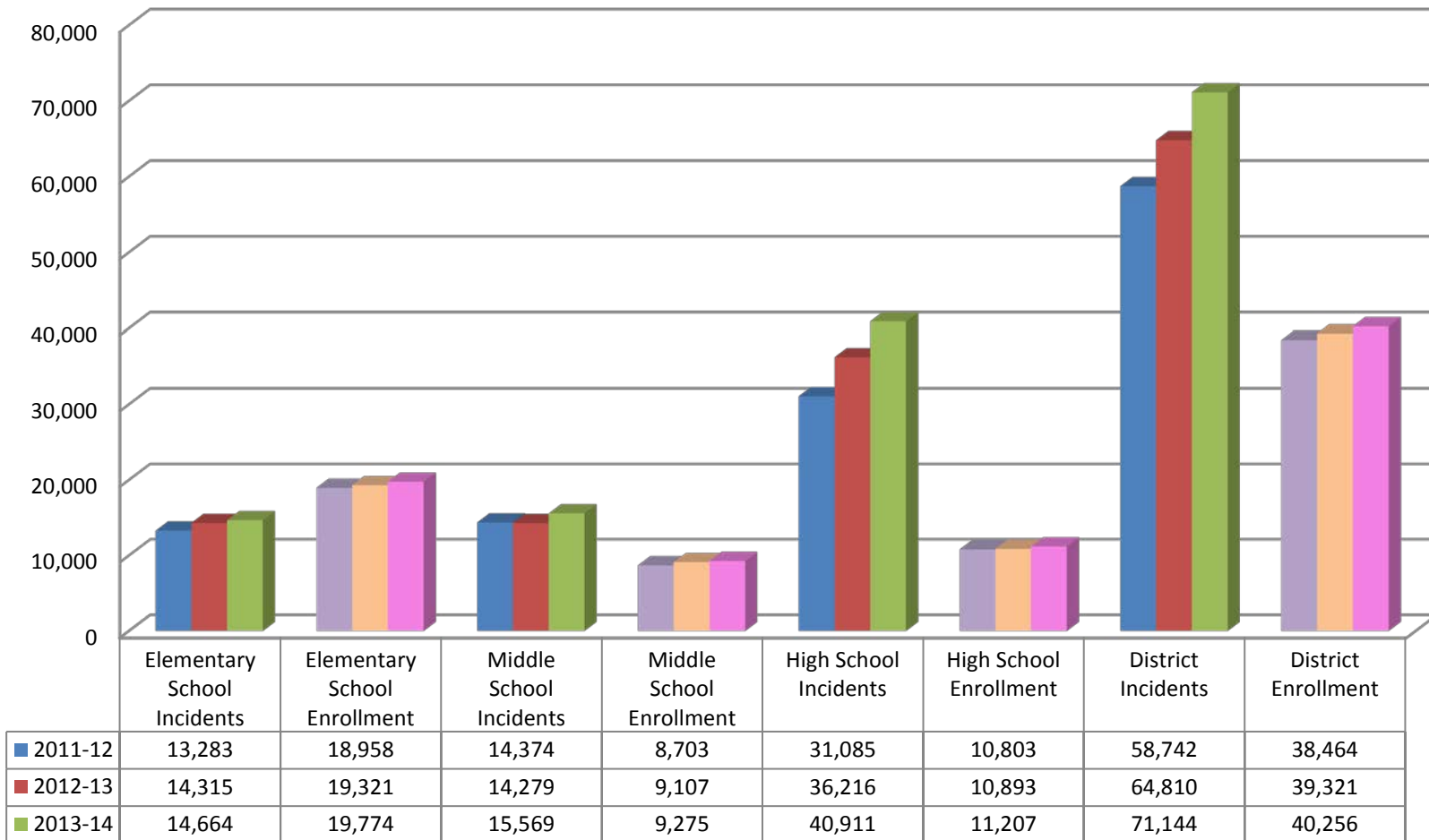
Evidence of Status of Compliance:

We are in full compliance of this policy. Evidence is listed below:

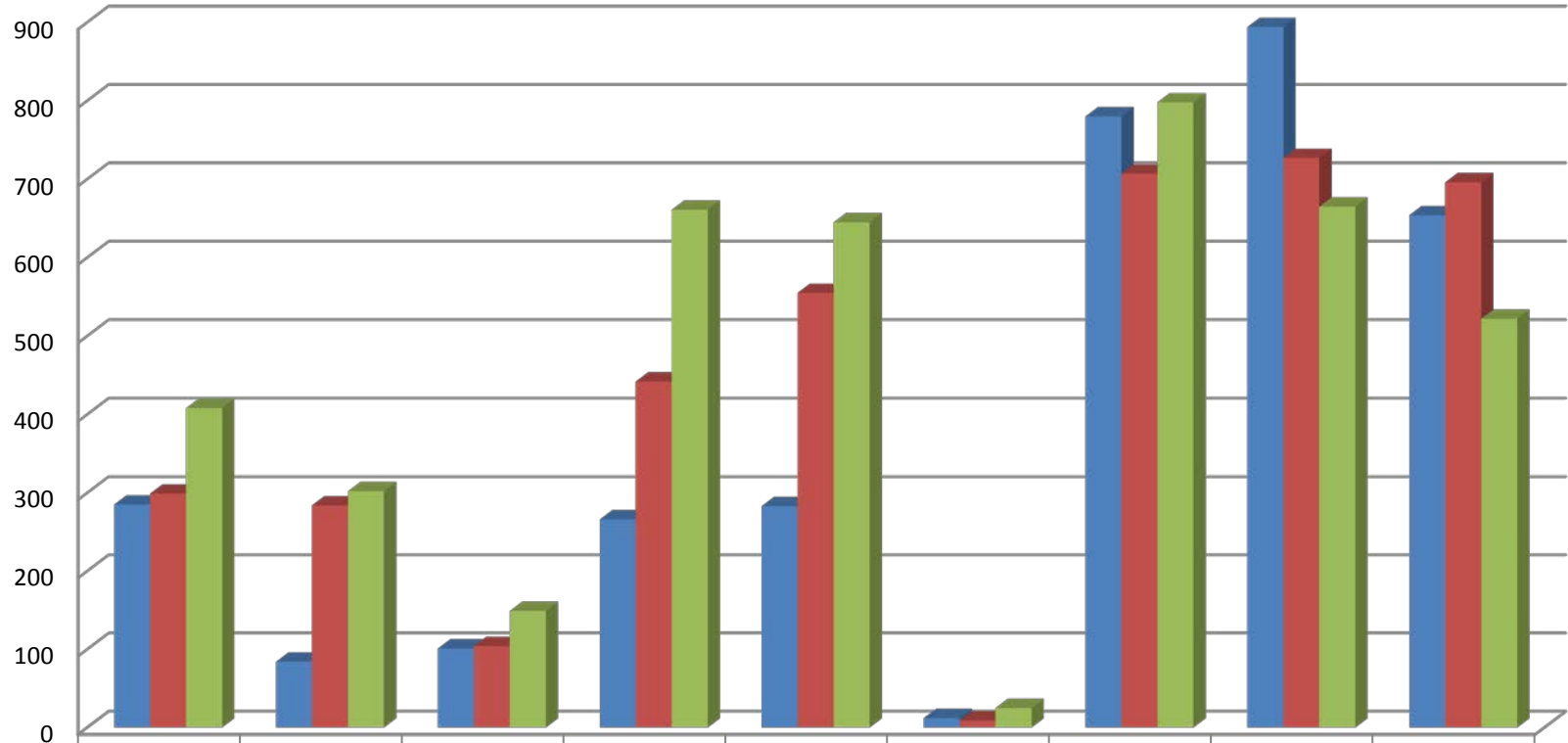
- Parent-Student Guides were printed for the 2013-14 school year that outlined expected student conduct and sanctions applied in case of disorderly conduct. Parents were given a copy of the guide and the comprehensive district policy is posted on the district’s website.
- Student hearings are conducted by District Hearing Officers for students who have violated established codes of conduct and appropriate punishments are assigned. (See attachments for HCS’s hearings, expulsions, and appeals to the District and to the School Board)

- Unruly student behavior that disrupts the learning environment is dealt with. (See attachments for high school, middle school, and elementary school data comparisons)
- Quarterly meetings and trainings are held with school district administrators to discuss discipline issues, concerns, and procedures.
- Appeal Board training and reviews are held as necessary for District Appeal Board members to review procedures, district policies, and laws.

Discipline Incident Totals By Level Three Year Comparisons

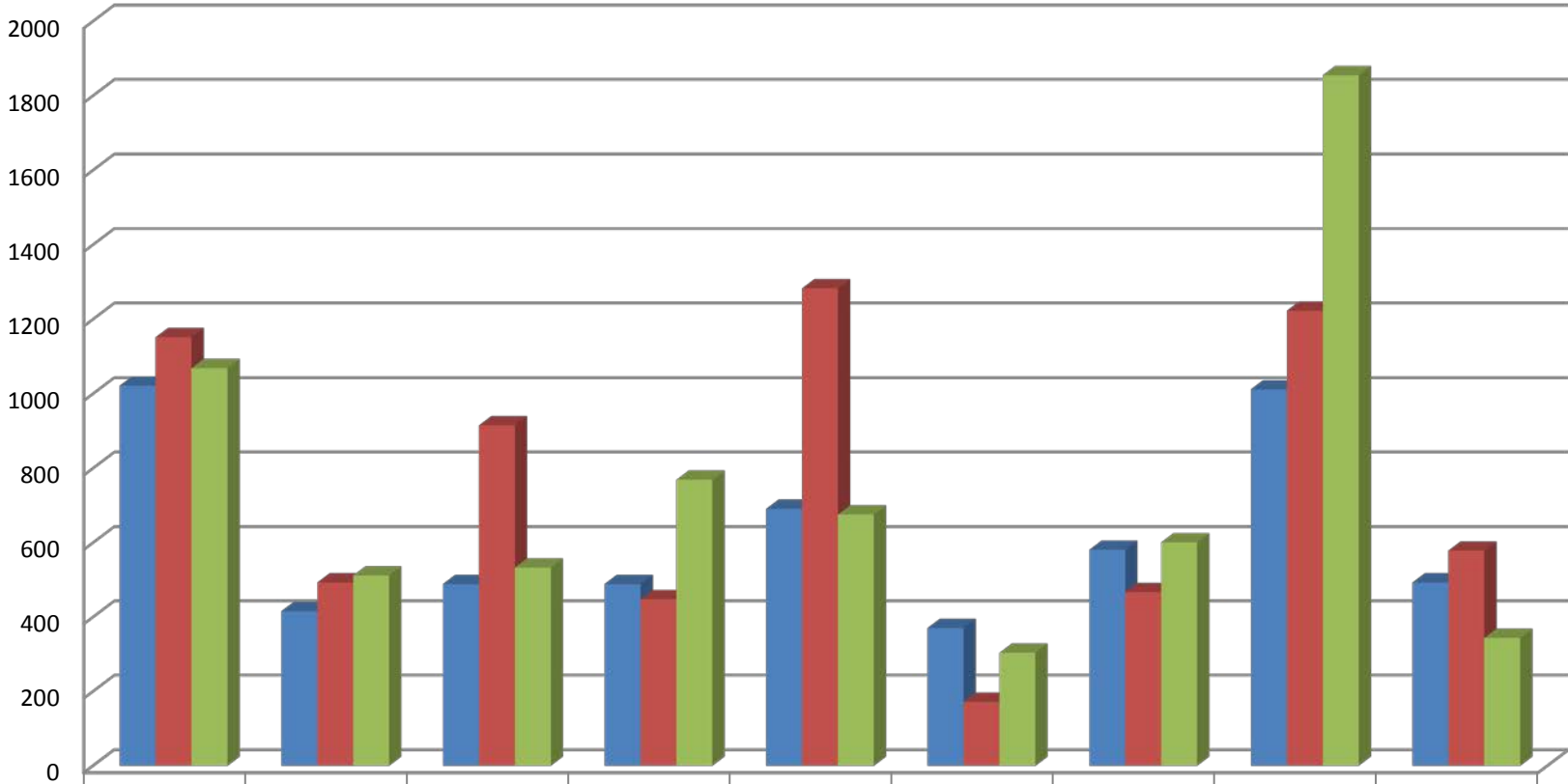


Discipline Incident Counts Elementary Schools Three Year Comparisons



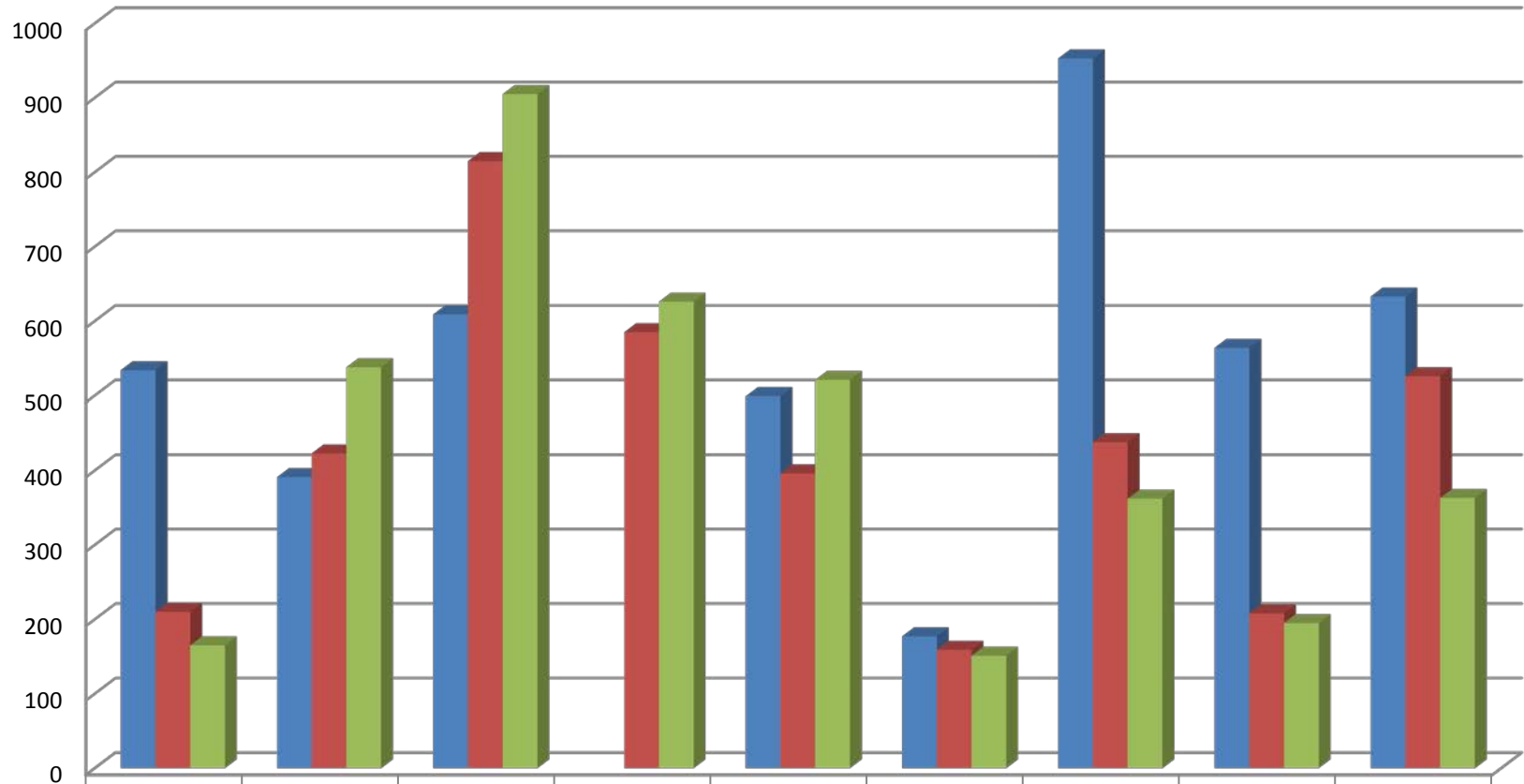
■ 2011-12	AE	BE	CE	CFE	DE	FBE	GSFE	HWE	KE
	285	84	101	266	283	12	780	894	654
■ 2012-13	299	284	104	442	555	9	707	727	696
■ 2013-14	408	302	149	661	645	25	798	665	522

Discipline Incident Counts Elementary Schools Three Year Comparisons



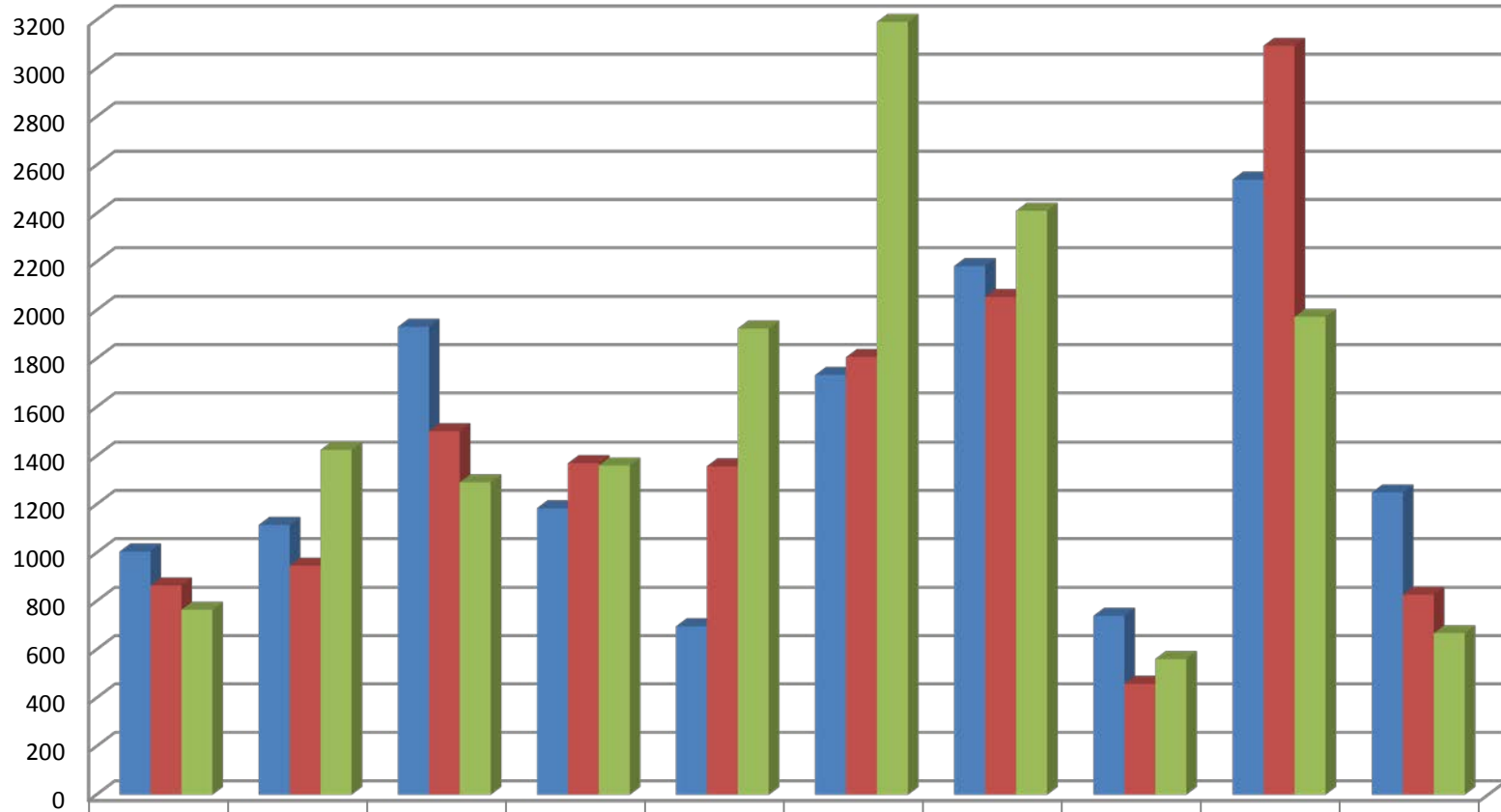
	LE	LKE	MBE	MBI	MBP	ME	NMBE	NMBI	NMBP
■ 2011-12	1022	416	489	489	691	371	581	1012	493
■ 2012-13	1152	493	915	448	1283	172	467	1223	579
■ 2013-14	1069	512	533	769	676	304	601	1855	344

Discipline Incident Counts Elementary Schools Three Year Comparisons



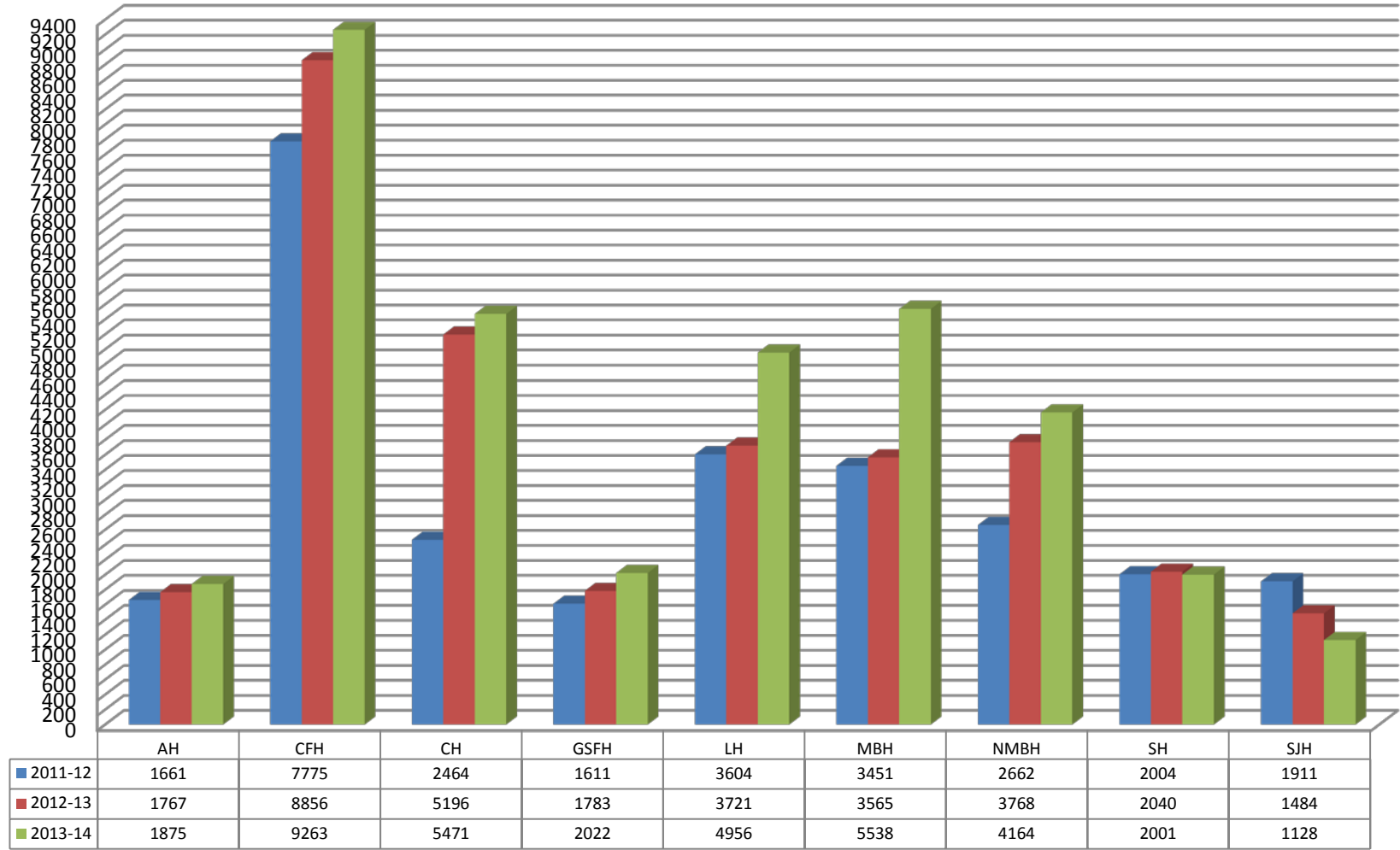
■ 2011-12	OBE	PBE	PDE	ROE	SCE	SE	SJE	SSE	WE
■ 2012-13	534	391	609	585	499	177	953	564	633
■ 2013-14	210	423	815	626	396	159	438	208	526
	165	538	905	626	521	151	362	195	363

Discipline Incident Counts Middle Schools Three Year Comparisons

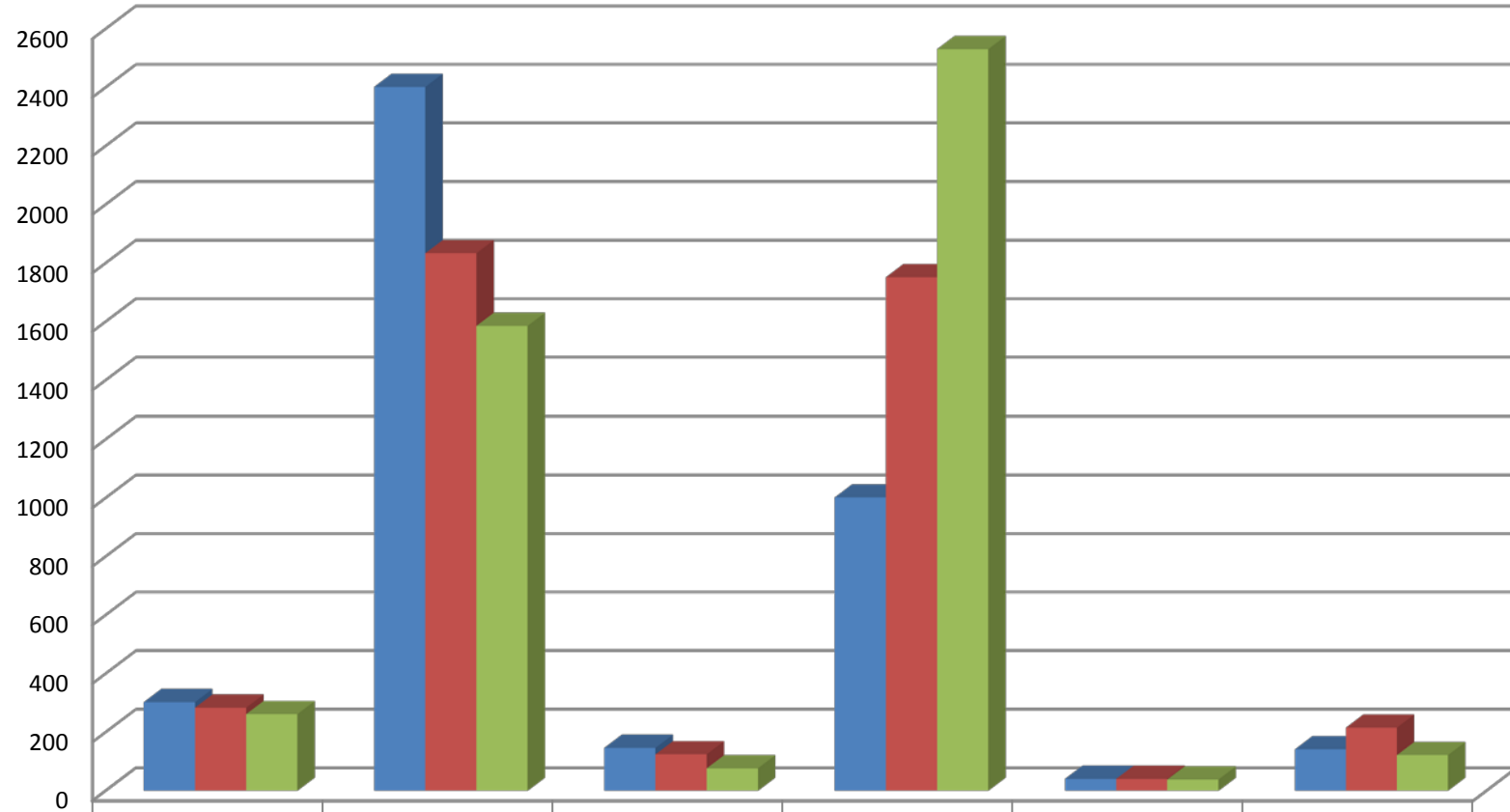


	AM	BWM	CM	FM	LM	MBM	NMBM	OBM	SJM	WPM
■ 2011-12	1005	1115	1931	1184	696	1732	2183	739	2540	1249
■ 2012-13	864	946	1502	1370	1358	1806	2055	458	3093	827
■ 2013-14	764	1425	1291	1361	1925	3192	2411	561	1972	667

Discipline Incident Counts High Schools Three Year Comparisons

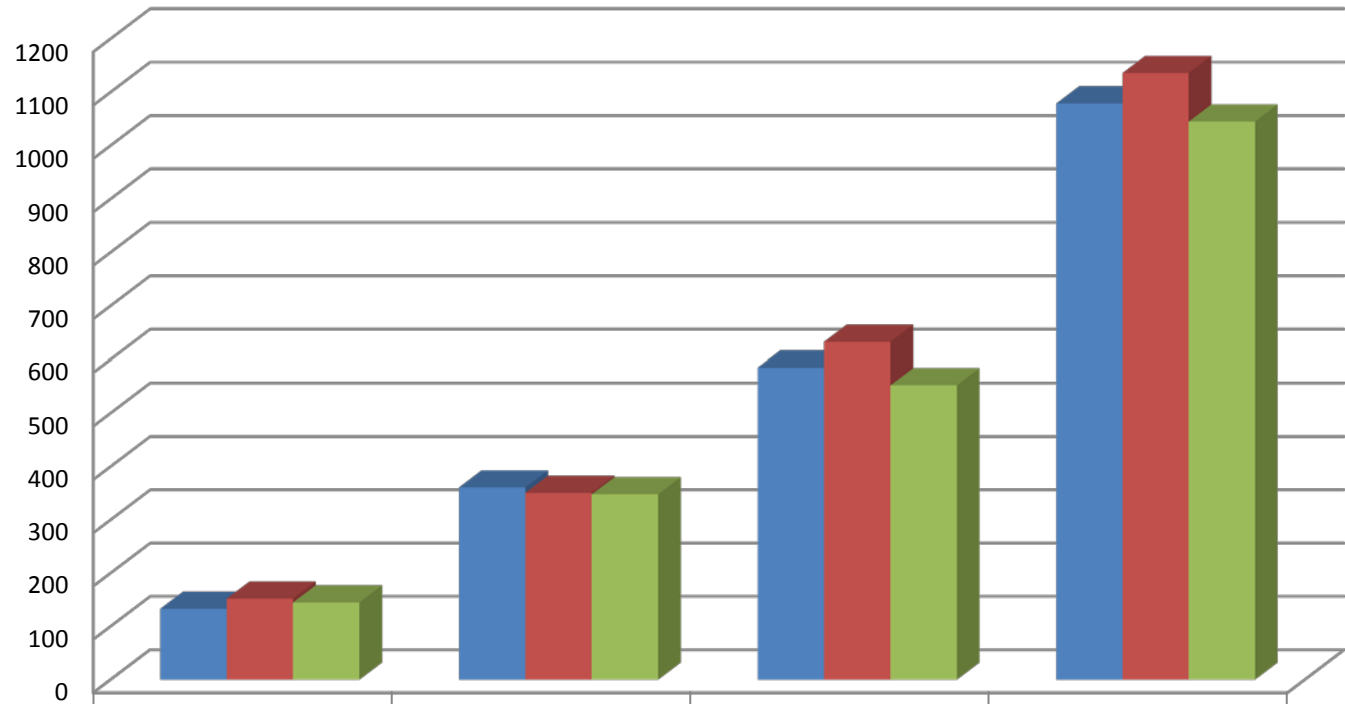


Discipline Incident Counts Program Schools Three Year Comparisons



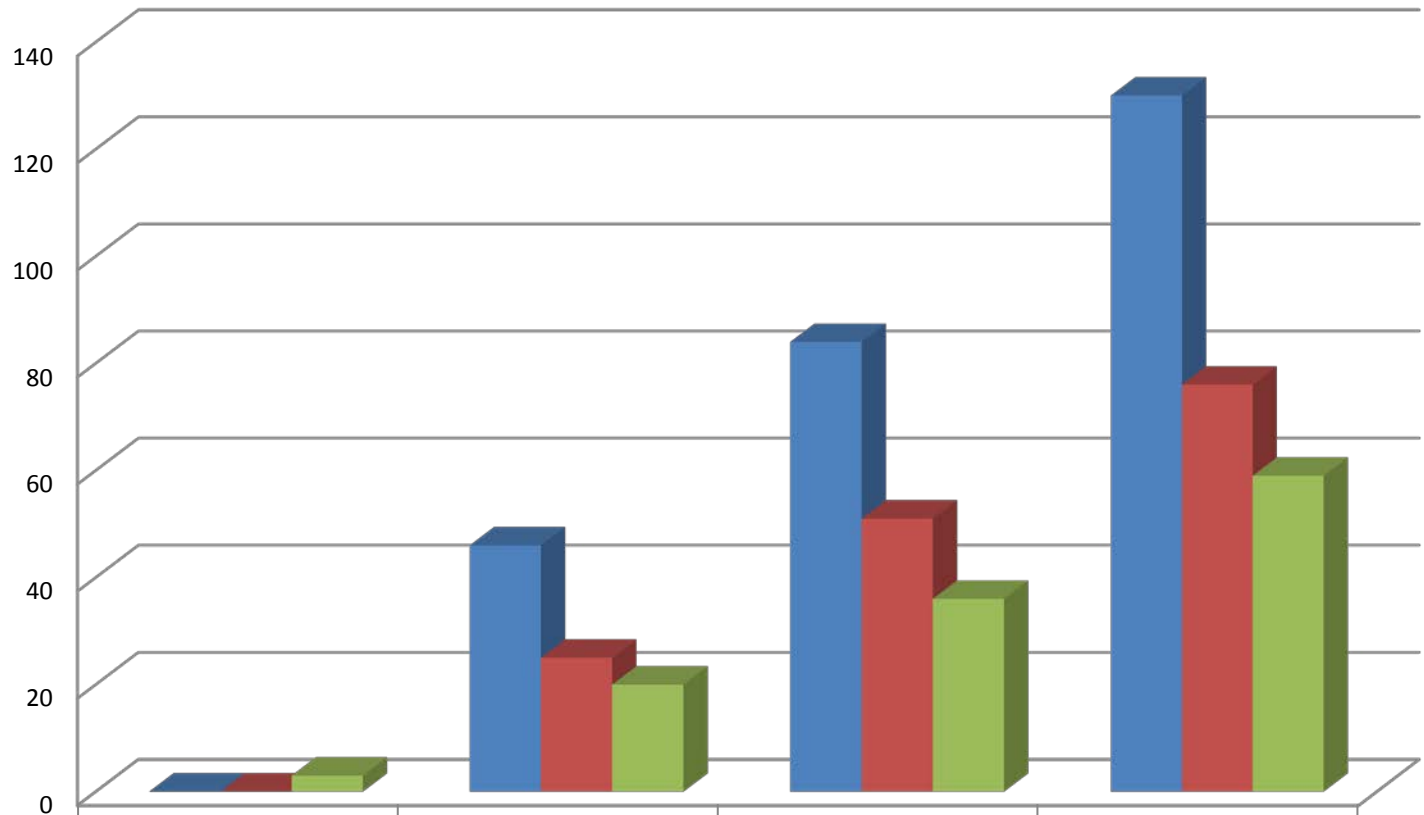
	AAST	ATA	ECH	HCEC	SA	TLC
■ 2011-12	303	2402	147	1002	41	142
■ 2012-13	284	1834	125	1752	41	216
■ 2013-14	262	1586	77	2531	39	122

Expulsion Hearings Three Year Comparisons



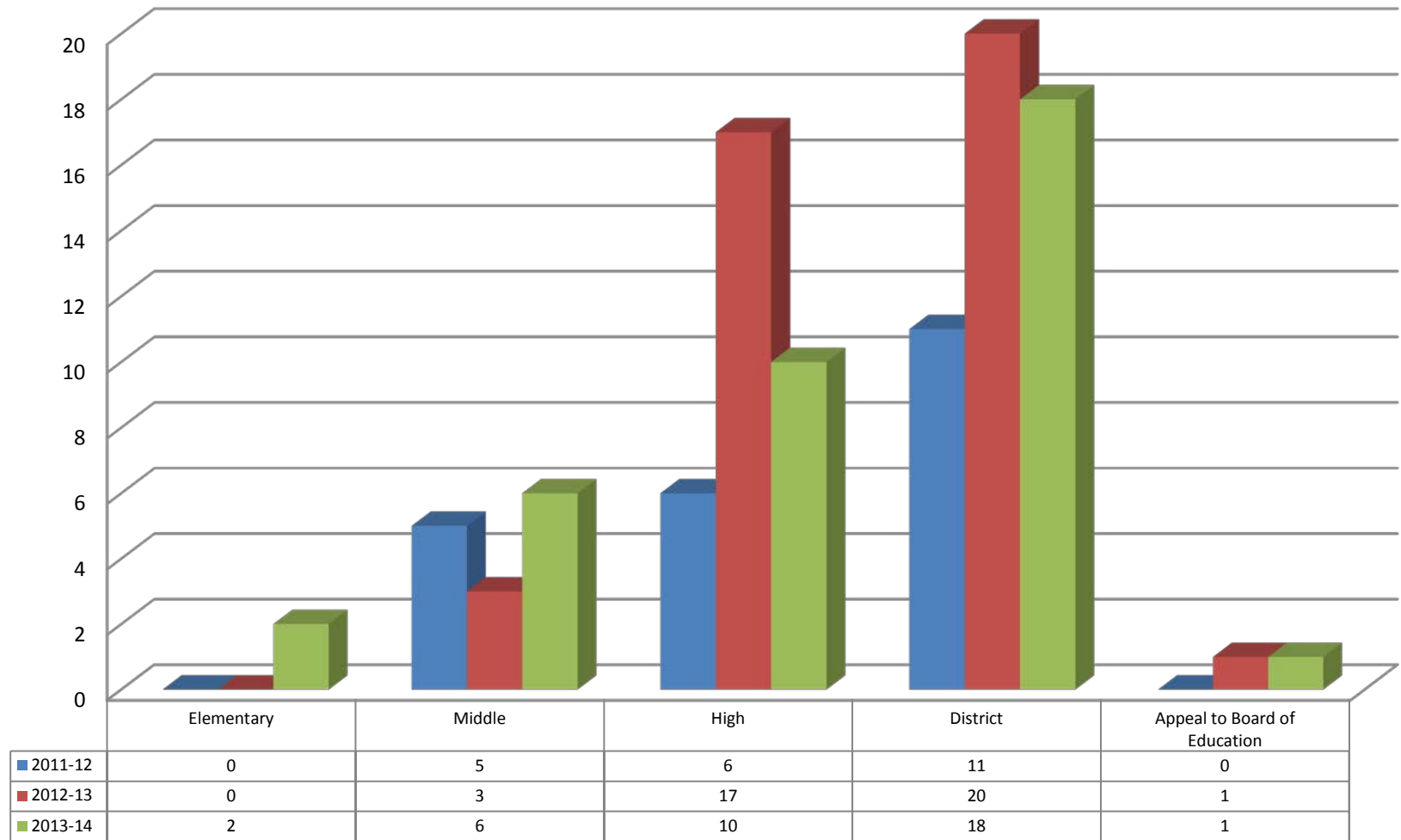
	Elementary Schools	Middle Schools	High Schools	District
■ 2011-12 Expulsion Hearings	133	361	585	1079
■ 2012-13 Expulsion Hearings	152	351	633	1136
■ 2013-14 Expulsion Hearings	145	348	552	1045

Expulsions Three Year Comparisons



	Elementary School	Middle School	High School	District
2011-12 Expulsions	0	46	84	130
2012-13 Expulsions	0	25	51	76
2013-14 Expulsions	3	20	36	59

Appeal Board Hearings Three Year Comparisons



Bomb Threats Three Year Comparisons

