

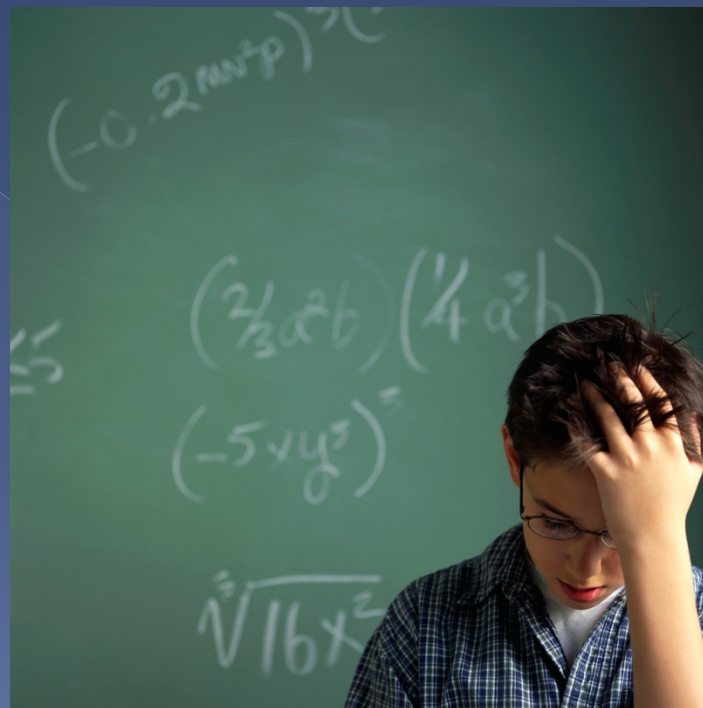


Monitoring Report on Numeracy

March 2014

Power Goal 3:

Math



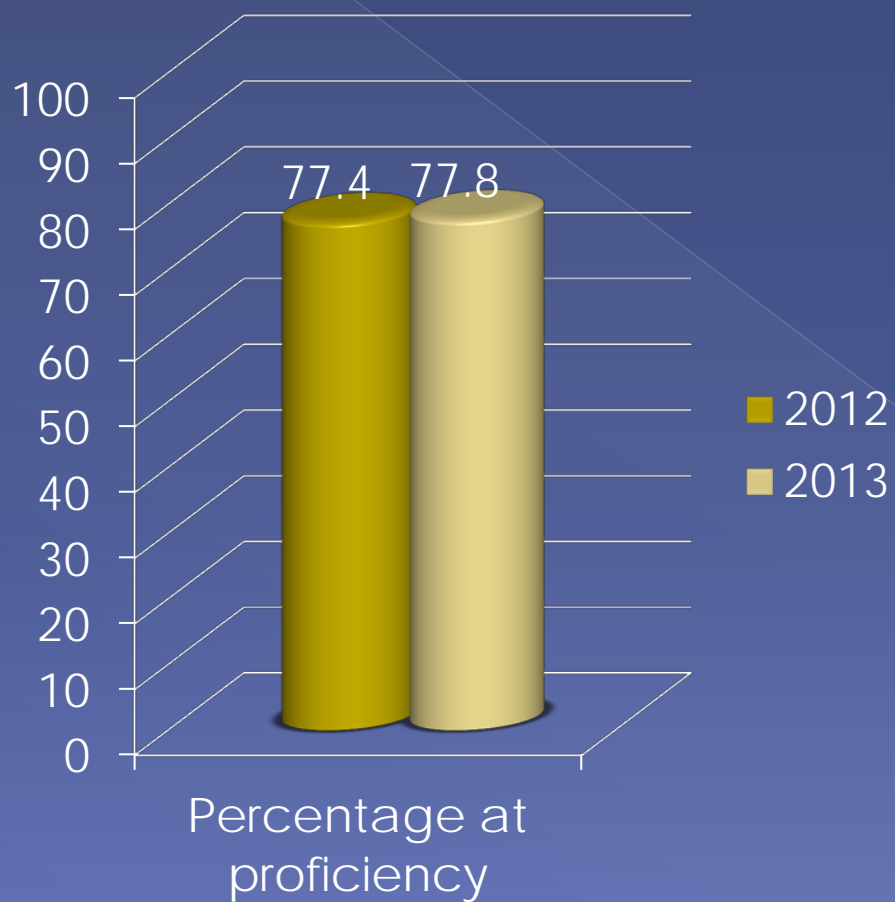
Proficiency level grades 3-HS

Power Goal 3: Math

Increase the percentage of students in grades 3-HS who score at proficiency/passing level

- **MEASURES:** Aggregated percentage scoring Met or higher on PASS Math in grades 3-8, Level 3 or higher on HSAP Math, and passing Algebra I end-of-course test

Power Goal 3: Math



STATUS:

Up 0.4

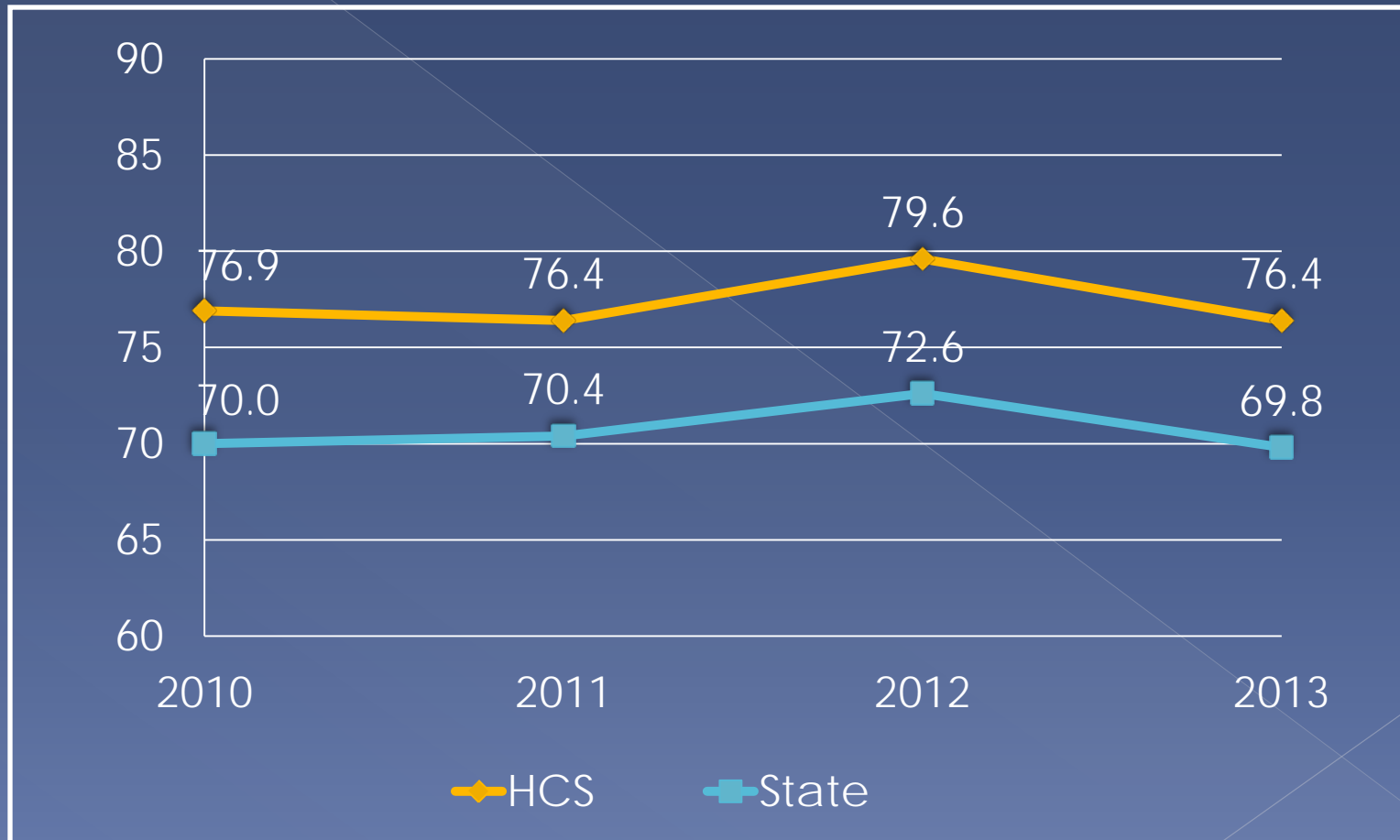


Power Goal 3: Math

+/-	MEASURE DETAIL	
-3.2	PASS Math Grade 3 Met+	76.4%
+4.4	PASS Math Grade 4 Met+	86.1%
0	PASS Math Grade 5 Met+	81.0%
-1.2	PASS Math Grade 6 Met+	78.6%
-2.5	PASS Math Grade 7 Met+	74.2%
-0.3	PASS Math Grade 8 Met+	75.4%
+0.6	HSAP Math Level 3+	59.1%
+1.3	Algebra I End-of-Course test pass rate	89.4%

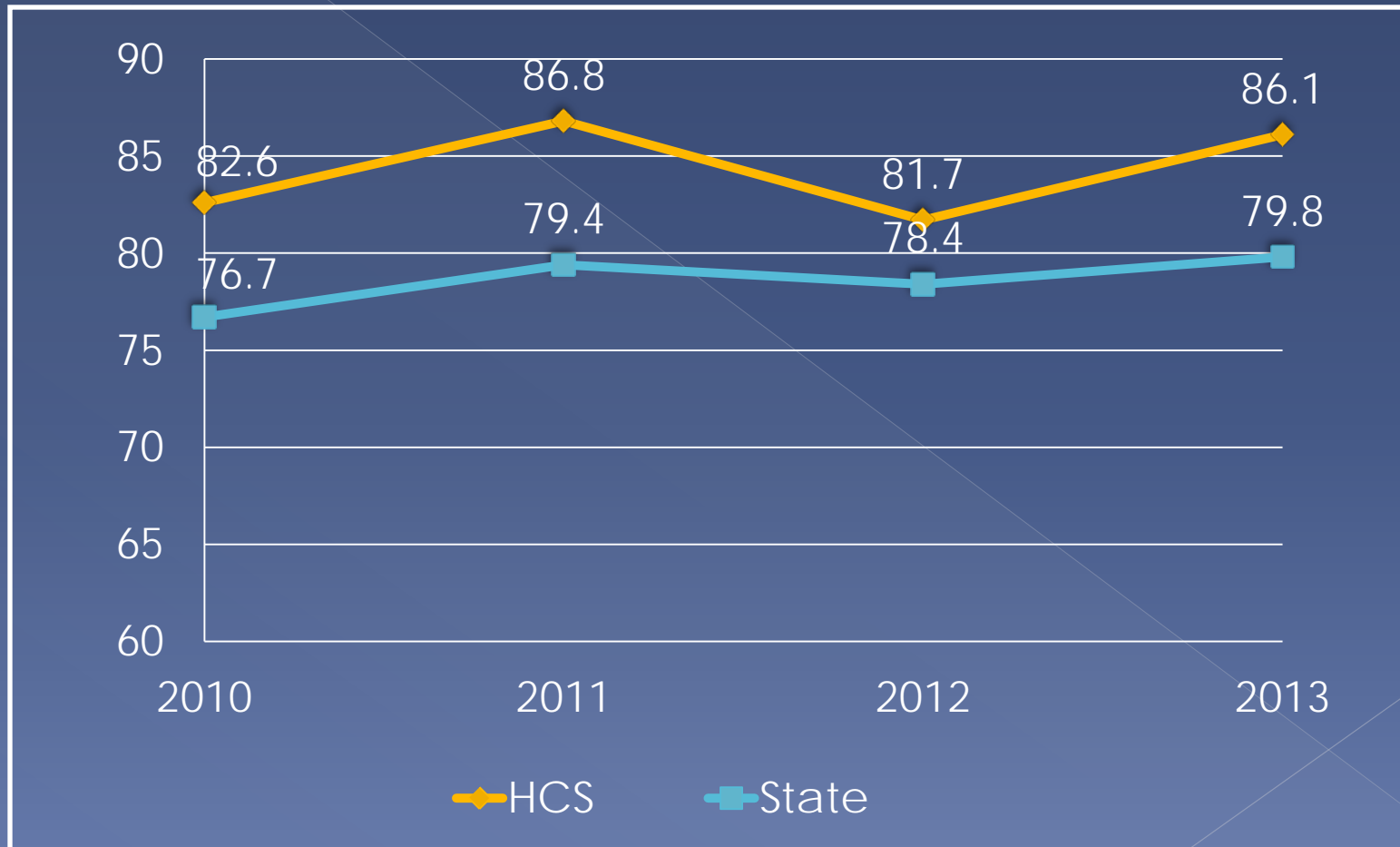
PASS Mathematics

Grade 3: Percentage Met + Exemplary



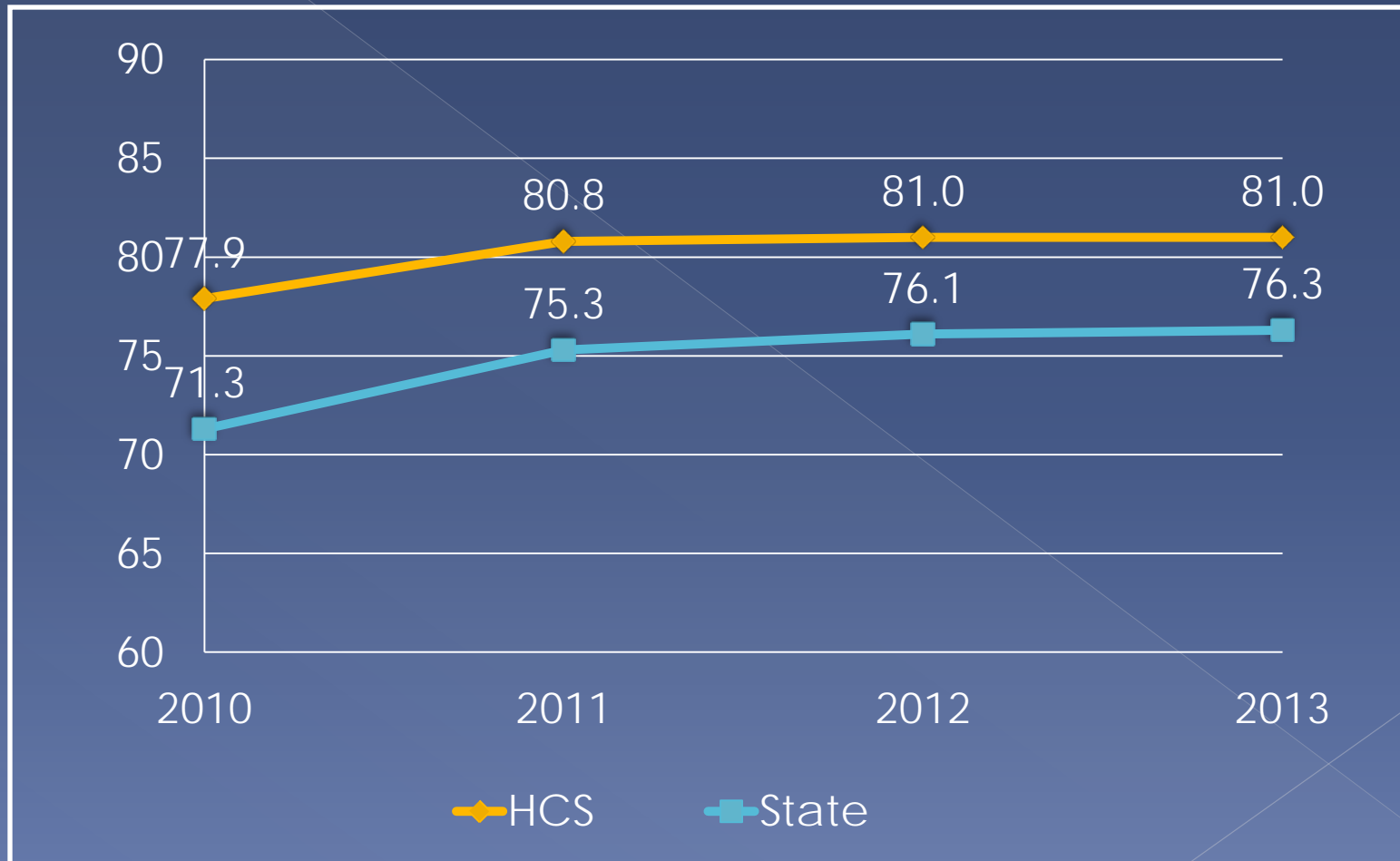
PASS Mathematics

Grade 4: Percentage Met + Exemplary



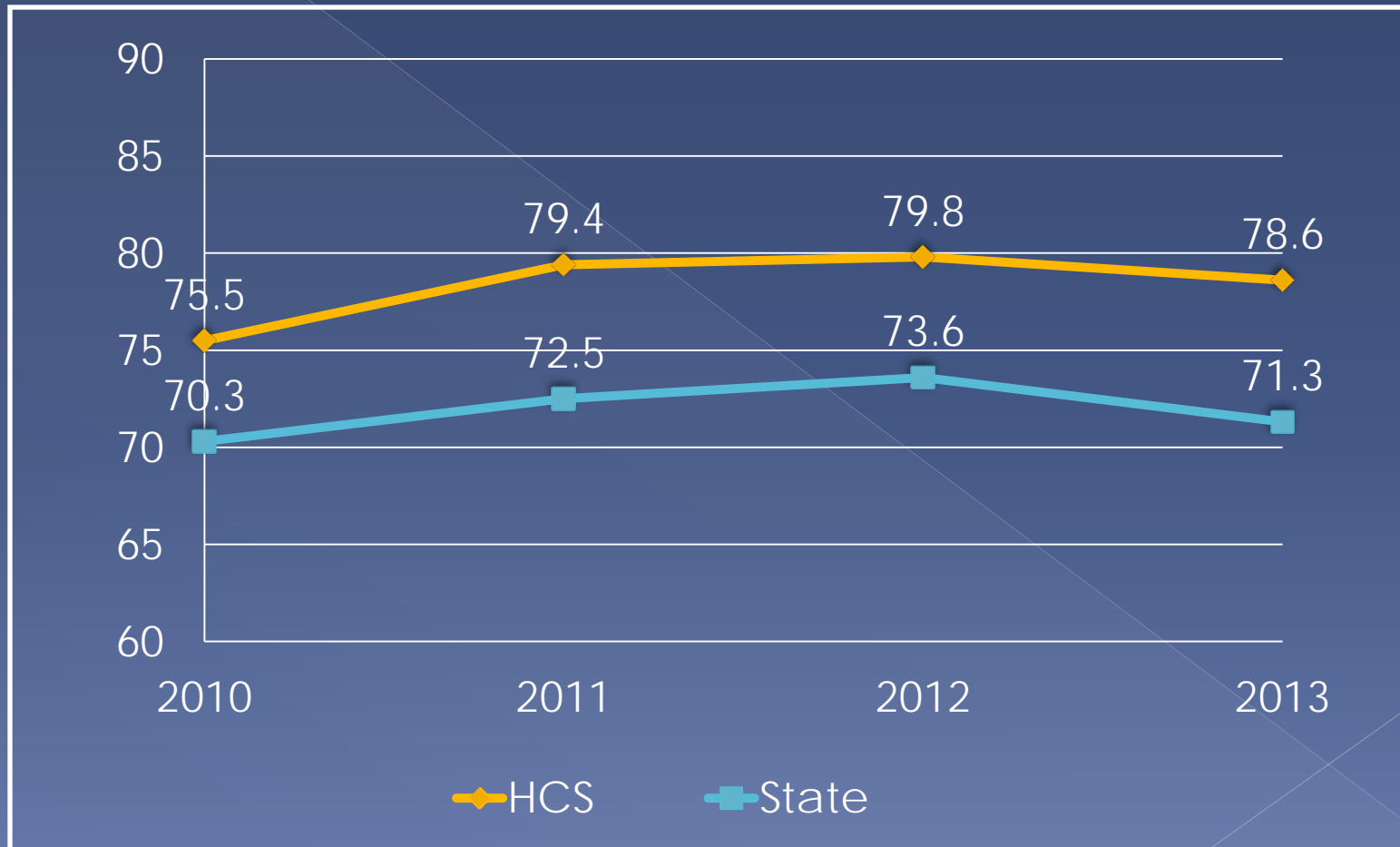
PASS Mathematics

Grade 5: Percentage Met + Exemplary



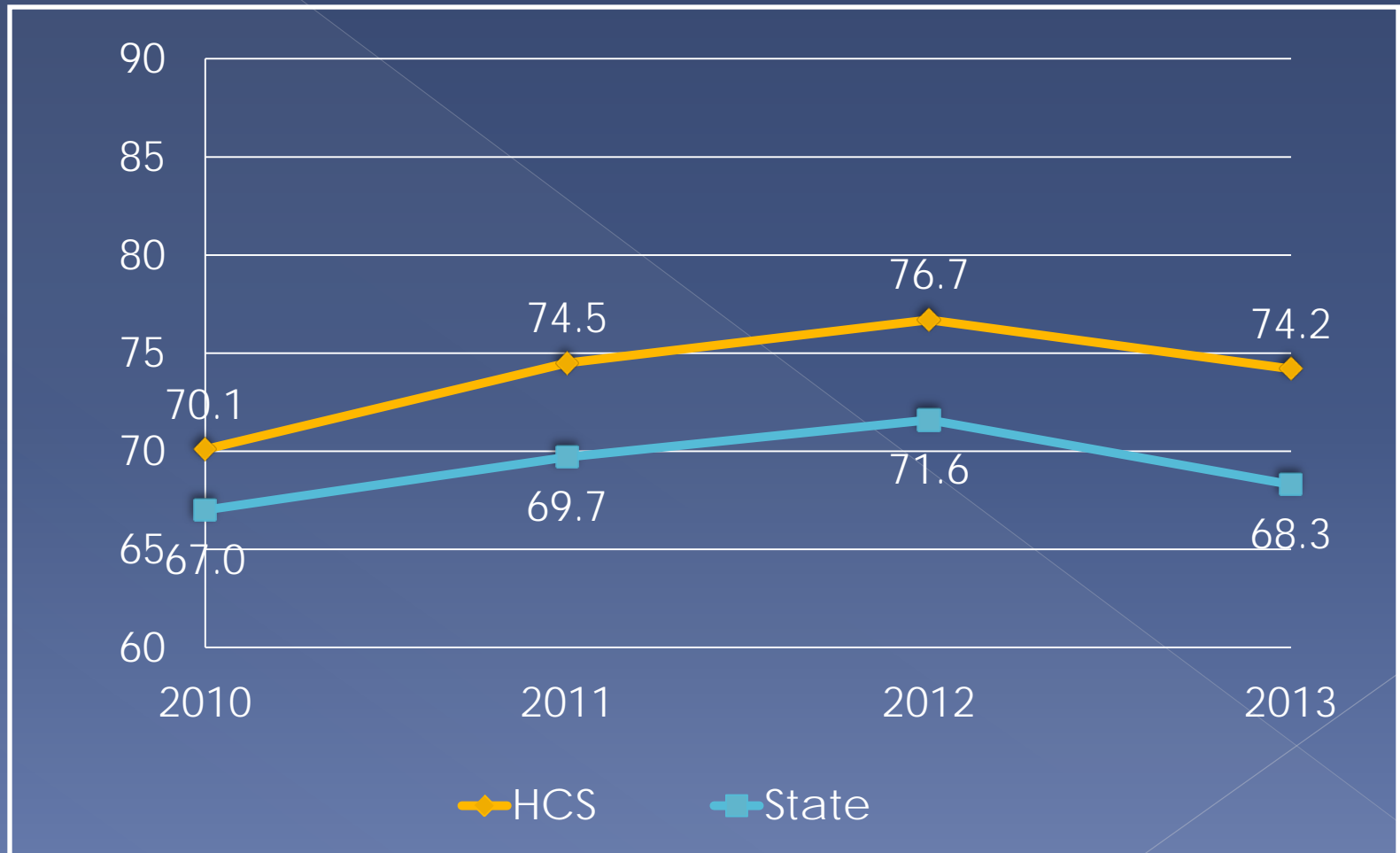
PASS Mathematics

Grade 6: Percentage Met + Exemplary



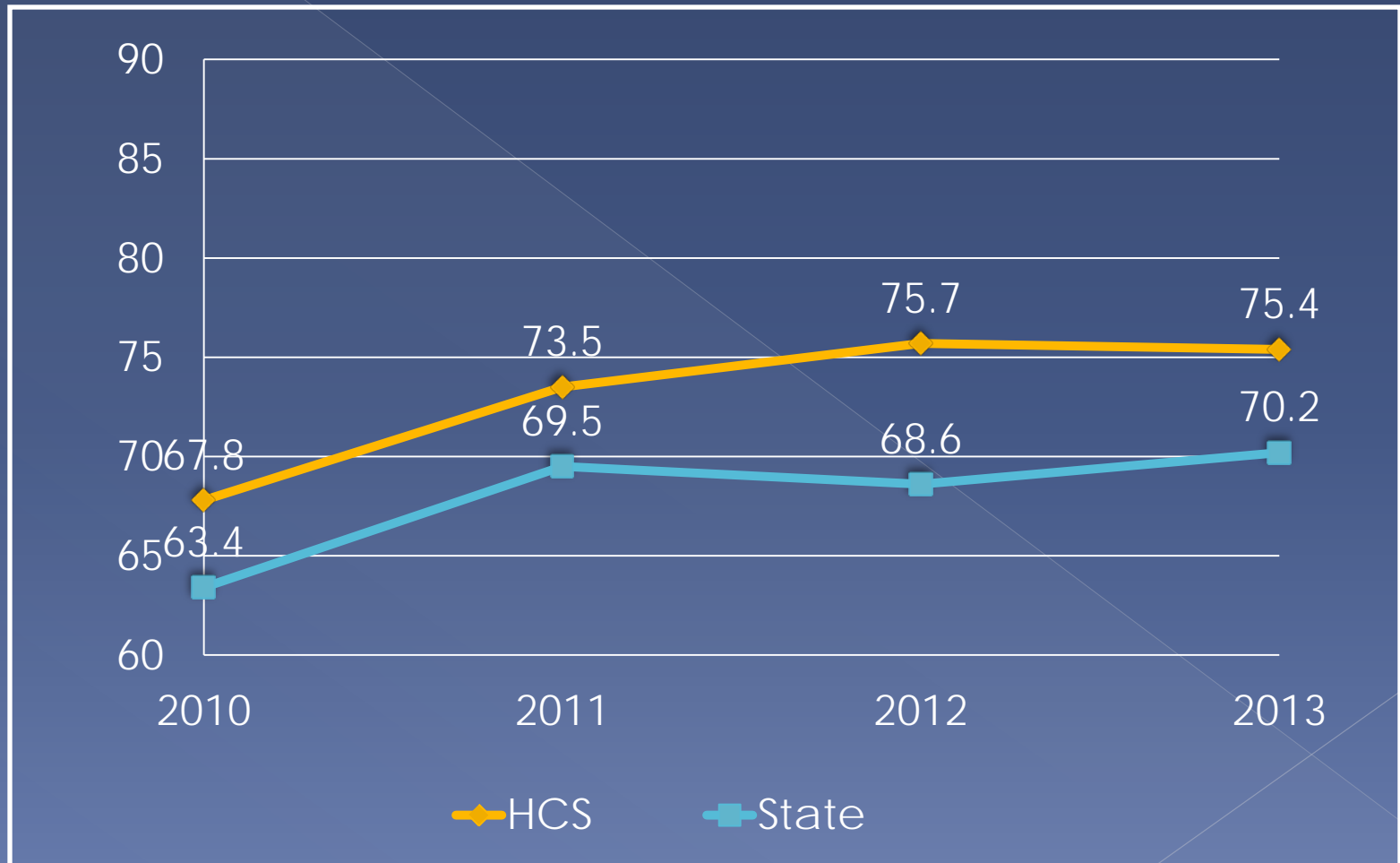
PASS Mathematics

Grade 7: Percentage Met + Exemplary



PASS Mathematics

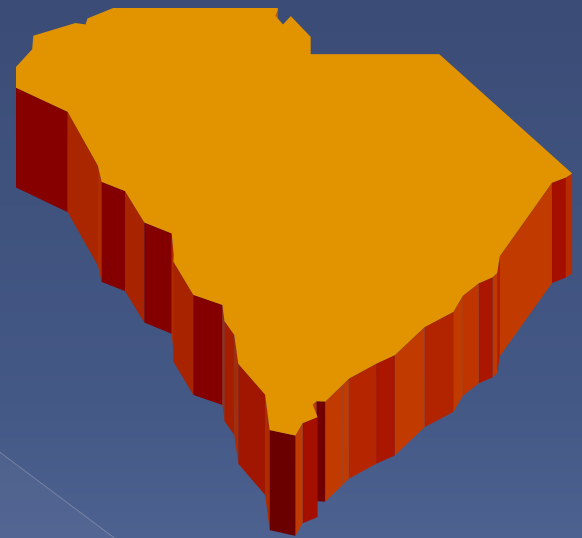
Grade 8: Percentage Met + Exemplary



2013 PASS Comparisons

Among the State's:

- Top Performing Districts
- Largest Districts
- Districts “Like Us”



PASS
Math

How do we compare

TOP-PERFORMING DISTRICTS



2013 PASS Math: % Passing (Met+Exemplary)

Selected high performing districts:

Grade 3

York 4	85.3
Anderson 1	83.8
Lexington 5	80.9
Pickens	77.1
HORRY ↓1	76.4
Lexington 1	73.9

Grade 4

York 4	92.6
Lexington 1	88.8
Anderson 1	88.5
Lexington 5	87.3
HORRY ↑1	86.1
Pickens	84.3

Grade 5

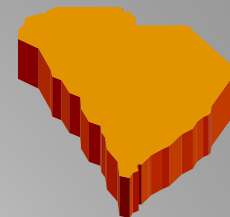
York 4	87.8
Lexington 5	83.5
Anderson 1	83.4
Lexington 1	81.8
HORRY ⇔	81.0
Pickens	77.3

PASS

Math

How do we compare?

LARGE DISTRICTS



2013 PASS Math: % Passing (Met+Exemplary)
SC's 6 largest school districts:

Grade 3

HORRY ⇔	76.4
Greenville	75.4
Charleston	70.0
Richland 2	69.7
Berkeley	68.8
Aiken	63.8

Grade 4

HORRY ↑1	86.1
Greenville	85.5
Berkeley	83.4
Charleston	81.5
Richland 2	75.4
Aiken	73.8

Grade 5

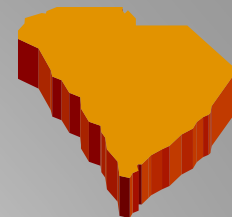
Greenville	81.1
HORRY ↓1	81.0
Berkeley	78.3
Charleston	78.2
Richland 2	77.1
Aiken	68.5

PASS

Math

How do we compare?

SIMILAR POVERTY LEVELS



2013 PASS Math: % Passing (Met+Exemplary)
District's most like HCS by poverty index

Grade 3

HORRY	↔	76.4
Spartnburg 3		73.2
Florence 1		72.1
Newberry		67.8
Greenwd 50		66.6
Georgetown		66.1

Grade 4

HORRY	↑1	86.1
Florence 1		82.0
Georgetown		79.7
Spartnburg 3		79.6
Greenwd 50		74.2
Newberry		72.3

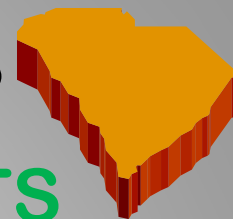
Grade 5

HORRY	↔	81.0
Newberry		80.0
Greenwd 50		78.6
Georgetown		77.5
Florence 1		72.1
Spartnburg 3		72.0

PASS
Math

How do we compare?

TOP-PERFORMING DISTRICTS



2013 PASS Math: % Passing (Met+Exemplary)
Selected high performing districts:

Grade 6

Anderson 1	87.6
York 4	86.8
Lexington 5	83.2
HORRY ↑1	78.6
Lexington 1	77.3
Pickens	77.3

Grade 7

York 4	88.4
Lexington 5	83.5
Anderson 1	81.3
Lexington 1	77.1
HORRY ⇔	74.2
Pickens	68.3

Grade 8

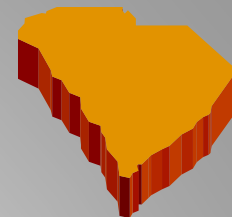
York 4	90.0
Lexington 5	84.7
Anderson 1	82.1
Lexington 1	76.7
HORRY ⇔	75.4
Pickens	67.3

PASS

Math

How do we compare?

LARGE DISTRICTS



2013 PASS Math: % Passing (Met+Exemplary)
SC's 6 largest school districts:

Grade 6

HORRY ⇄	78.6
Charleston	74.9
Greenville	73.8
Berkeley	72.6
Richland 2	63.6
Aiken	61.7

Grade 7

HORRY ⇄	74.2
Charleston	72.5
Greenville	72.3
Berkeley	67.6
Richland 2	63.8
Aiken	62.9

Grade 8

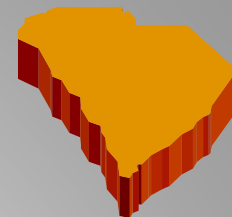
HORRY ⇄	75.4
Charleston	74.5
Greenville	72.1
Berkeley	71.2
Aiken	65.0
Richland 2	63.5

PASS

Math

How do we compare?

SIMILAR POVERTY LEVELS



2013 PASS Math: % Passing (Met+Exemplary)
District's most like HCS by poverty index

Grade 6

HORRY	↔	78.6
Spartnburg 3		72.7
Florence 1		70.9
Georgetown		69.5
Newberry		67.6
Greenwd 50		67.0

Grade 7

HORRY	↑1	74.2
Spartnburg 3		71.4
Florence 1		68.8
Newberry		64.3
Georgetown		61.9
Greenwd 50		60.5

Grade 8

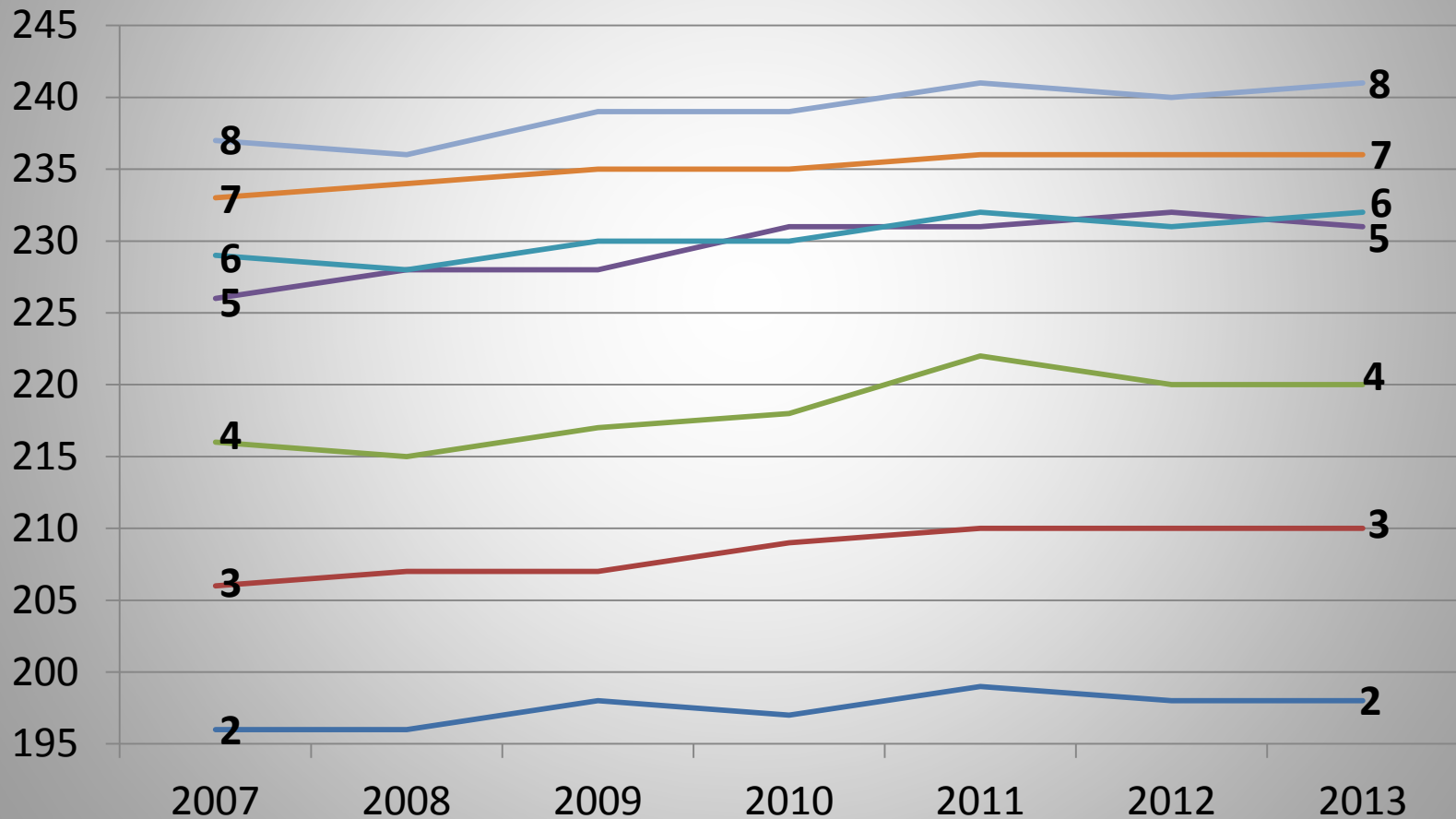
HORRY	↔	75.4
Spartnburg 3		75.3
Florence 1		70.5
Newberry		70.2
Greenwd 50		69.0
Georgetown		65.8

MAP

Mathematics

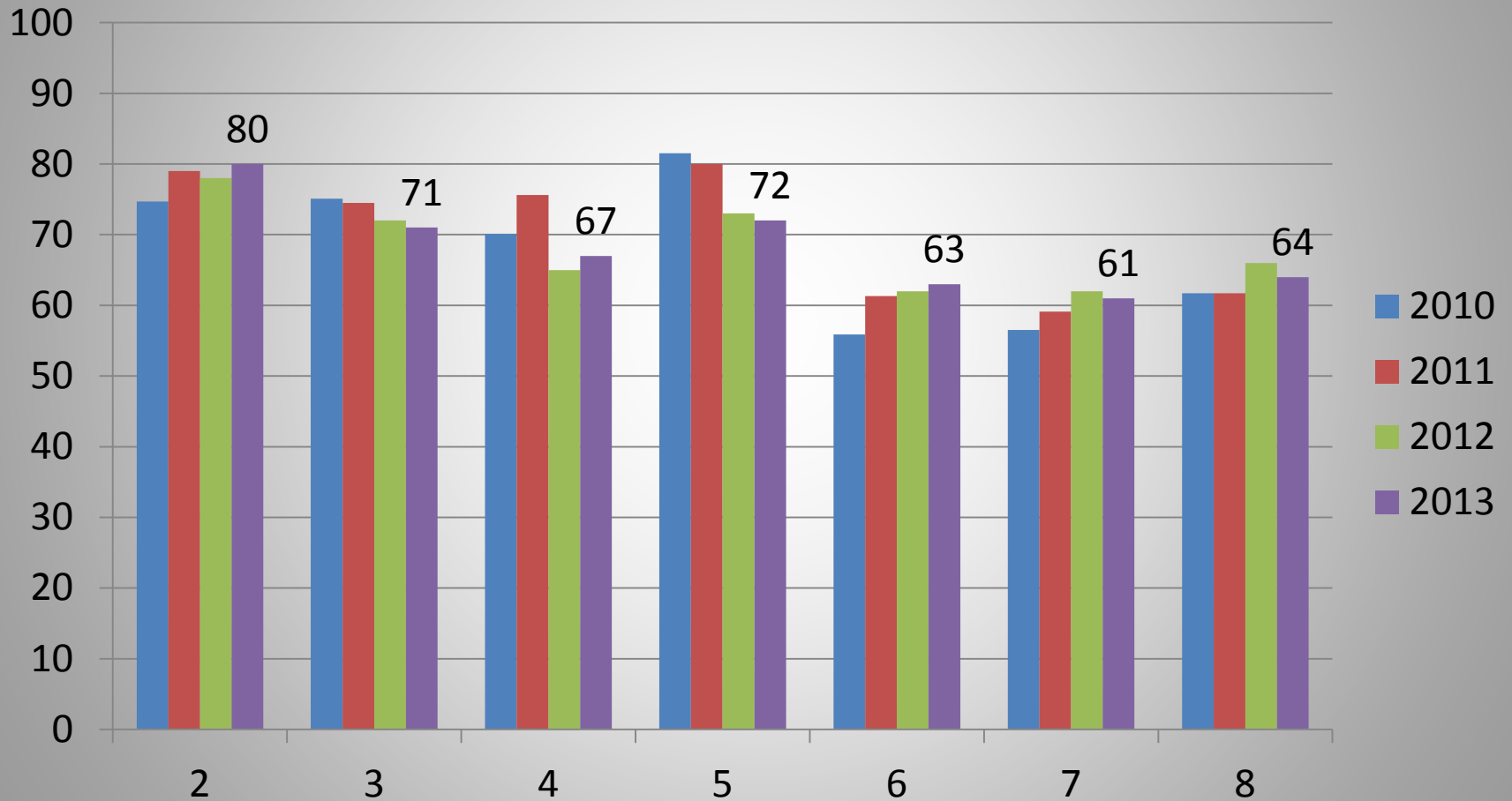
MAP Math Scores Over Time

Spring MAP Math Median RIT



MAP Math Growth Goals

Percentage of HCS Students Who Met Annual RIT Growth Goal by Spring



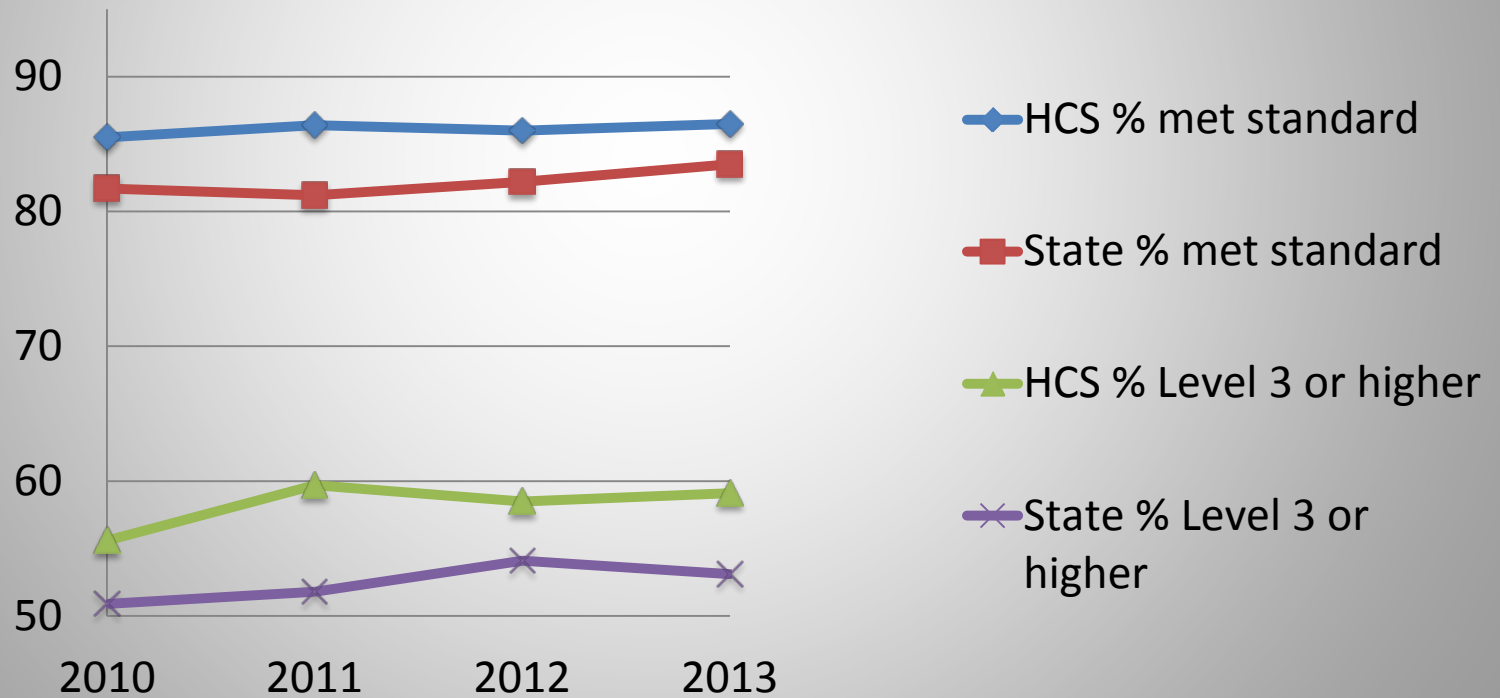
HSAP

Mathematics
Proficiency and Diploma Levels

High School 2nd Year

HSAP Math

Performance of second year high school students 2010-2013



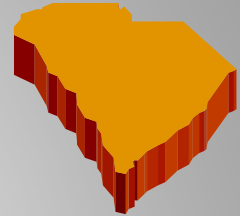
How do we compare?

High School

HSAP Math
Proficiency Level
(Levels 3-4)

2013 HSAP Math:

- *Selected high performing districts*
- *Districts with similar size*
- *Districts with similar demographics*



High Performing

York 4	79.8
Lexington 5	75.8
Anderson 1	71.5
Lexington 1	66.1
Pickens	61.5
HORRY ↔	59.1

Largest Enrollment

HORRY ↑2	59.1
Charleston	57.0
Greenville	56.3
Aiken	54.5
Berkeley	53.3
Richland 2	50.4

Similar Demographics

HORRY ↔	58.5
Florence 1	55.2
Georgetown	52.6
Grnwood 50	51.3
Spartnbrg 3	50.7
Newberry	50.0

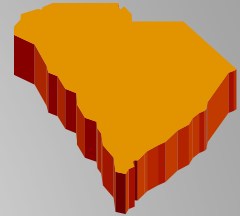
How do we compare?

High School

HSAP Math
Diploma Level
(Level 2)

2013 HSAP Math:

- *Selected high performing districts*
- *Districts with similar size*
- *Districts with similar demographics*



High Performing

York 4	95.8
Lexington 5	94.9
Anderson 1	93.7
Lexington 1	91.8
Pickens	87.8
HORRY ↓1	86.5

Largest Enrollment

Aiken	87.7
HORRY ↓1	86.5
Greenville	85.9
Berkeley	85.4
Charleston	84.9
Richland 2	82.9

Similar Demographics

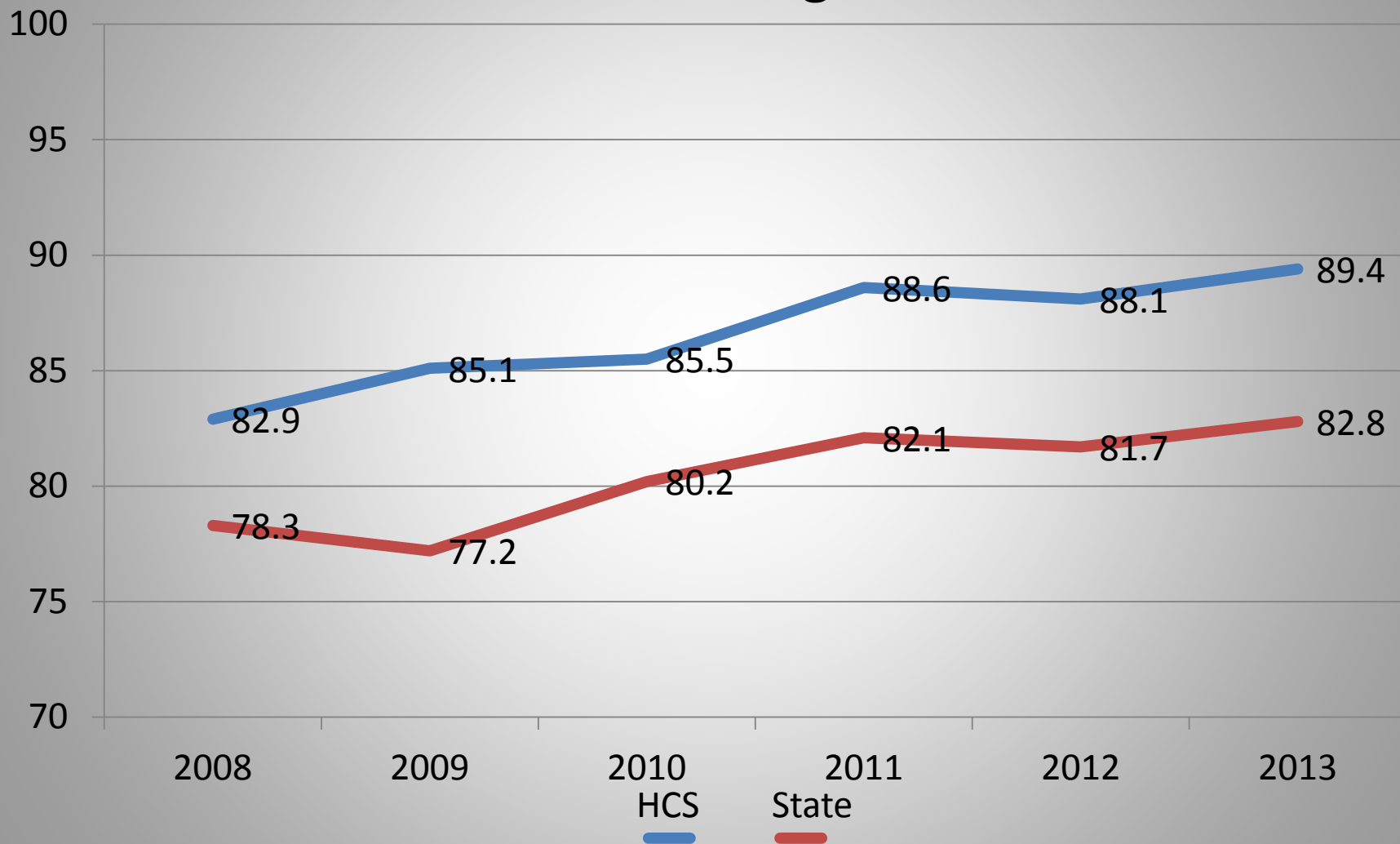
HORRY ↔	86.5
Grnwood 50	85.5
Spartnbrg 3	84.2
Newberry	83.5
Georgetown	82.6
Florence 1	80.2

Algebra I

End-of-Course Test

Algebra I End-of-Course Test

% Passing



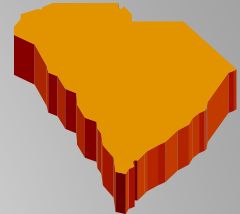
How do we compare?

High School

Algebra I End of Course Pass Rate

2013 Algebra I EOC:

- *Selected high performing districts*
- *Districts with similar size*
- *Districts with similar demographics*



High Performing

York 4	96.3
Lexington 5	93.6
Anderson 1	91.0
Lexington 1	90.9
HORRY ↔	89.4
Pickens	84.2

Largest Enrollment

HORRY ↔	89.4
Greenville	86.9
Charleston	85.6
Aiken	84.5
Richland 2	84.5
Berkeley	83.2

Similar Demographics

HORRY ↔	89.4
Newberry	83.2
Spartnbrg 3	81.4
Florence 1	79.2
Grnwood 50	75.7
Georgetown	75.6