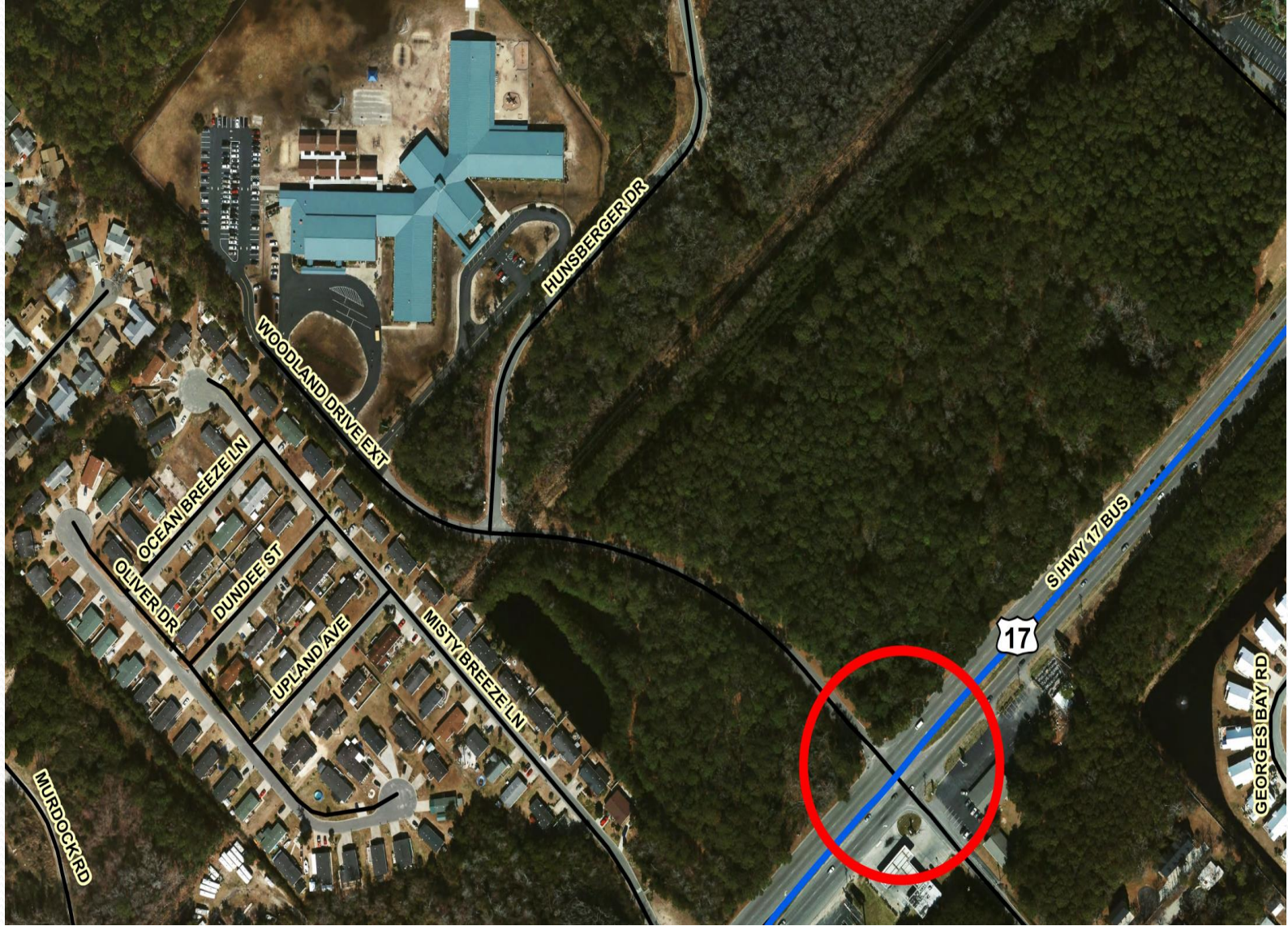


Horry County Schools

Overview of Seaside Elementary Traffic Conditions

January 13, 2014



Traffic Issues

- Seaside Elementary School Opened in 1996.
- Traffic problems at the intersection of Woodland Drive Extension and US-17 Business have been an issue since the school opened.
- Prior to the installation of a “no-left turn” sign in the Fall of 2013, this intersection was a problem for cars and buses exiting Woodland Drive Extension and turning left to go north on US-17 Business. However, drivers often ignore this “no-left turn” sign.
- This intersection remains a problem for cars and buses travelling northbound on US-17 Business and turning left onto Woodland Drive Extension.
- Multiple accidents have occurred at the intersection of Woodland Drive Extension and US-17 Business.
- An October 2012 SC DOT analysis recommended that additional storage capacity be created on Woodland Drive Extension to relieve US-17 Business congestion near the school.
- SC DOT also recommended a review of the school’s loading/unloading procedures for students. (A school district review determined that the staff at SSES operate loading/unloading procedures for students very efficiently.)

Historical Efforts

- During the construction of SSES, HCS requested SC DOT to install a stop-and-go traffic light at the intersection of Woodland Drive Extension and US-17 Business. SC DOT would not commit since the school had not opened, as they wanted to observe actual traffic impacts.
- Following the school's opening, efforts were again made requesting SC DOT to install a stop-and-go traffic light at the intersection of Woodland Drive Extension and US-17 Business.

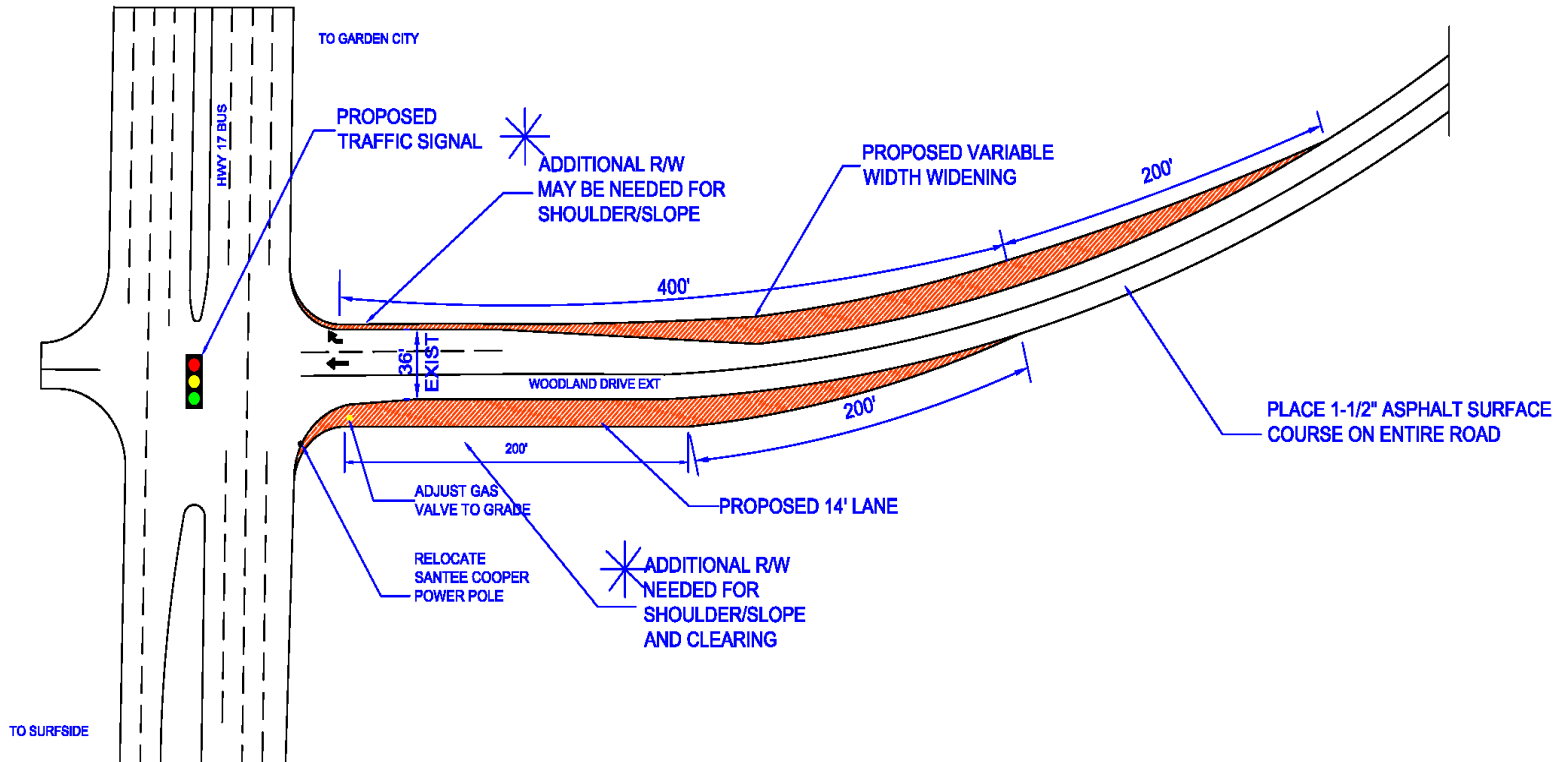
Historical Efforts (cont)

- At least 14 attempts have been made over the years to get a stop-and-go traffic light installed at the intersection of Woodland Drive Extension and US-17 Business.
- These efforts include requests to:
 - SC DOT
 - SC House of Representatives
 - Horry County Police
 - Horry County Planning

Recent Efforts (2013-14)

- Horry County Engineering
 - Examined road dedication of Woodland Drive Extension.
- County Transportation Committee (CTC)
 - Approved some funding for construction of turn lanes, along with widening, and general road improvements should the road become a part of the county road system. (Projected costs for improvements-- \$180,576, including contingency and engineering fees. This cost does not include the stop-and-go traffic light.)
- SC DOT
 - Received a request from HCS asking approval for the installation of a stop-and-go traffic light.* – January 2014.

**If approved, a stop-and-go traffic light would likely cost around \$125,000.*



NOT TO SCALE

REFERENCES

HORRY COUNTY
LAND DEVELOPMENT REGULATION

HORRY COUNTY
CODICES OF ORDINANCES

RELATED DRAWINGS & KEYWORDS

WOODLAND DRIVE EXT
LANE WIDENING
/RESURFACING PROJECT

6			
5			
4			
3			
2			
1	21-14-18	AM	DRAWN BY
2	DATE	CHK	DESCRIPTION



DRAWING NO.

2 OF 2

HCS-Funded Traffic Lights

- Palmetto Bays Elementary
 - Intersection of school entrance and Hwy. 544
- River Oaks Elementary
 - Intersection of Augusta Plantation Blvd. and River Oaks Dr.
- Carolina Forest Elementary, Carolina Forest High, Ocean Bay Elementary and Middle (Funded through land transfer)
 - Stop-and-go traffic lights installed at Postal Way and Gardner Lacy Rd; Gateway Dr. and Carolina Forest Blvd.; and future stop-and-go traffic light at the intersection of Ocean Bay Elementary bus loop and entrance to Ocean Bay Middle and the Academy for Art, Science and Technology.
 - These stop-and-go traffic lights were part of an arrangement with Horry County in exchange for deeding to the county the Carolina Forest High School bus and student entrance road, which was realigned into Postal Way.