

## **F. CAROLINA FOREST/CONWAY ATTENDANCE AREAS**

### **2. Realignment of Sixth Grade at OBMS to CFES, OBES, and ROES along with Rezoning Gardner Lacy Rd. (excluding Waterford Plantation), Myrtle Ridge Dr., and Undeveloped Areas to PBES & BWMS; Also Rezoning Hwy. 701 South to WPMS and CHS**

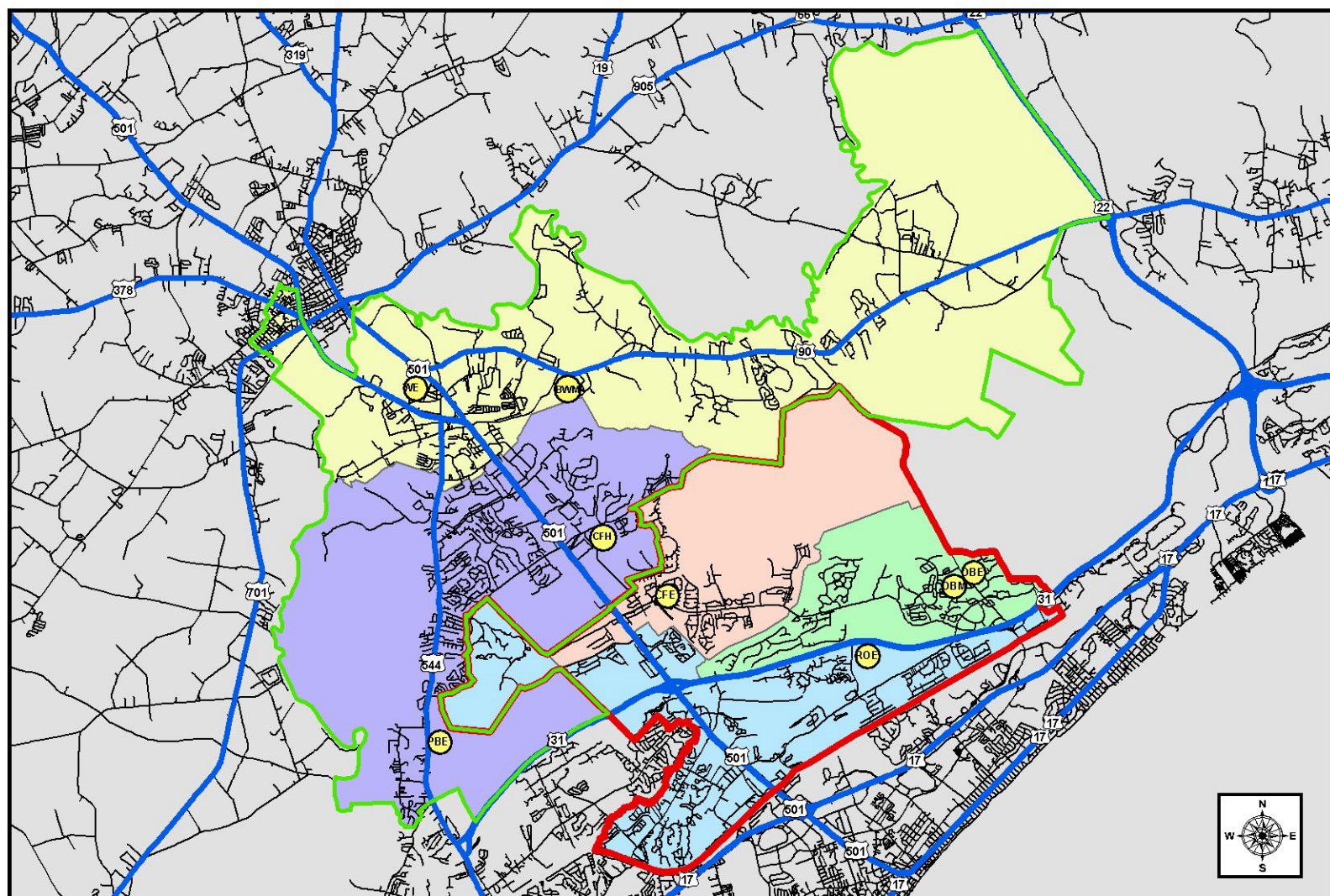
<b><u>Existing Attendance Areas</u></b>	<b><u>2012-13</u></b> <b><u>Average Daily</u></b> <b><u>Membership</u></b>	<b><u>2012-13</u></b> <b><u>Utilization</u></b>		<b><u>Realignment Areas</u></b>	<b><u>Total Students</u></b> <b><u>Moved</u></b>
Carolina Forest Elementary	909	84%		CFE to PBE	148
Ocean Bay Elementary	661	81%		CFE 6th	155
Palmetto Bays Elementary	539	71%		OBE 6th	110
River Oaks Elementary	607	70%		ROE 6th	103
Black Water Middle	712	78%		OBM to BWB	67
Ocean Bay Middle	1,130	124%		BWB to WPM	152
Carolina Forest High	1,661	67%		CFH to CH	214


  

<b><u>Realigned Student Data</u></b>	<b><u>2013-14</u></b> <b><u>Forecasted</u></b> <b><u>ADM</u></b>	<b><u>2013-14</u></b> <b><u>Utilization*</u></b>	<b><u>2017-18</u></b> <b><u>Forecasted</u></b> <b><u>ADM</u></b>	<b><u>2017-18</u></b> <b><u>Utilization*</u></b>	<b><u>2022-23</u></b> <b><u>Forecasted</u></b> <b><u>ADM</u></b>	<b><u>2022-23</u></b> <b><u>Utilization*</u></b>
Carolina Forest Elementary	945	88%	950	85%	973	87%
Ocean Bay Elementary	803	98%	861	101%	846	99%
Palmetto Bays Elementary	697	92%	734	94%	748	95%
River Oaks Elementary	733	84%	790	87%	739	82%
Black Water Middle	598	66%	633	64%	663	68%
Ocean Bay Middle	707	78%	891	91%	888	91%
Carolina Forest High	1,509	61%	1,774	67%	1,946	73%

NOTE: Data do not include Special Needs Self-Contained or other Special programs.

\*Utilization percentages shown above include a 0.5 increase in the Pupil/Teacher Ratio for the 2013-14 SY, and 2.0 increase in the Pupil/Teacher Ratio for the 2017-18 SY in grades 3-12 as approved by the HCS BOE.



<p><b>Legend</b></p> <p><b>Proposed Middle School Areas</b></p> <ul style="list-style-type: none"> <li>Oak Bay Middle</li> <li>Palmetto Bay Middle</li> <li>Highway</li> <li>Road</li> </ul> <p><b>Proposed Elementary School Areas</b></p> <ul style="list-style-type: none"> <li>Carolina Forest Elementary</li> <li>Oak Bay Elementary</li> <li>Palmetto Bay Elementary</li> <li>Palmetto Bay Elementary</li> <li>Palmetto Bay Elementary</li> <li>Palmetto Bay Elementary</li> </ul>	<p><b>Carolina Forest Attendance Area Realignment</b></p> <p><b>Realignment of Sixth Grade at OBMS to CFES, OBES, and ROES along with Rezoning Gardner Lacy Rd. (excluding Waterford Plantation), Myrtle Ridge Dr., and Undeveloped Areas to PBES &amp; BWMS; Also Rezoning Hwy. 701 South to WPMS and CHS</b></p>	
--	--	---