

**CAROLINA FOREST ATTENDANCE AREA**  
**PROPOSED MIDDLE SCHOOL /HIGH SCHOOL REALIGNMENT OPTIONS**

**ORIGINAL RECOMMENDATION**

**(West of Hwy 501 to BWM, Carolina Forest Blvd up to Avalon to BWM, and MB National and Waterford to BWM)**

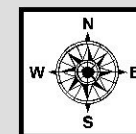
Data does not include Special Needs Self-Contained or other Special programs

<b><u>Existing Attendance Areas</u></b>	<b><u>2012-13 Average Daily Membership</u></b>	<b><u>2012-13 Utilization</u></b>	<b><u>Realignment Areas</u></b>	<b><u>Total Students Moved</u></b>
Carolina Forest High	1661	67%	BWM to WPM	152
Black Water Middle	712	78%	OBM to BWM	419
Ocean Bay Middle	1130	124%	CFH to CH	214
Conway High	1223	53%		
Whitemore Park Middle	565	62%		

<b><u>Realigned Student Data</u></b>	<b><u>2013-14 Forecasted ADM</u></b>	<b><u>2013-14 Forecasted Utilization</u></b>	<b><u>2017-18 Forecasted ADM</u></b>	<b><u>2017-18 Forecasted Utilization</u></b>	<b><u>2022-23 Forecasted ADM</u></b>	<b><u>2022-23 Forecasted Utilization</u></b>
Carolina Forest High	1,447	58%	1,774	72%	1,946	79%
Black Water Middle	950	105%	909	100%	955	105%
Ocean Bay Middle	723	80%	773	85%	874	96%
Conway High	1,461	64%	1,496	65%	1,559	68%
Whitemore Park Middle	702	77%	721	79%	753	83%

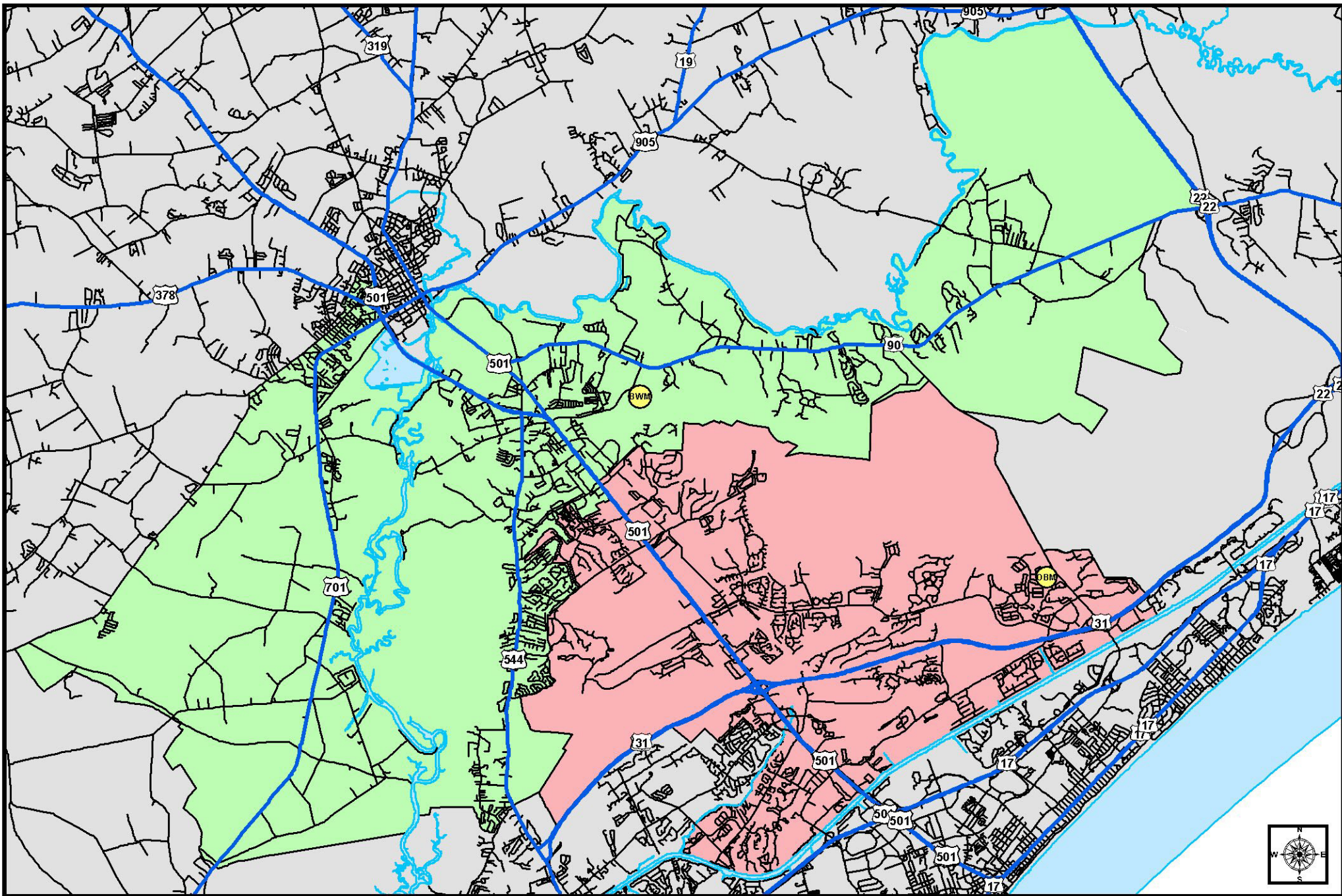
**CAPACITY RELIEF OPTIONS (Short-Term Building Projects - Board Requested Options)**

Black Water Middle - TBD



HCS  
Horry County School District





- Legend**
- Highways
  - Roads
  - Major Water Bodies
  - 2012-13 Middle School Areas
  - Black Water Middle
  - Ocean Bay Middle

## Black Water Middle - Ocean Bay Middle Existing Attendance Areas