

**CAROLINA FOREST ATTENDANCE AREA
PROPOSED MIDDLE SCHOOL /HIGH SCHOOL REALIGNMENT OPTIONS**

OPTION 2
(River Oaks Elementary becomes part of the Socastee Attendance Area)

Data does not include Special Needs Self-Contained or other Special programs

<u>Existing Attendance Areas</u>	<u>2012-13</u> <u>Average Daily</u> <u>Membership</u>	<u>2012-13</u> <u>Utilization</u>	<u>Realignment</u> <u>Areas</u>	<u>Total</u> <u>Students</u> <u>Moved</u>
Carolina Forest High	1661	67%	BWM to WPM	152
Black Water Middle	712	78%	OBM to FBM	349
Ocean Bay Middle	1130	124%	CFH to CH	214
			CFH to SH	320
Conway High	1223	53%		
Whittemore Park Middle	565	62%		
Socastee High	1350	77%		
Forestbrook Middle	1035	102%		

<u>Realigned Student Data</u>	<u>2013-14</u> <u>Forecasted</u> <u>ADM</u>	<u>2013-14</u> <u>Forecasted</u> <u>Utilization</u>	<u>2017-18</u> <u>Forecasted</u> <u>ADM</u>	<u>2017-18</u> <u>Forecasted</u> <u>Utilization</u>	<u>2022-23</u> <u>Forecasted</u> <u>ADM</u>	<u>2022-23</u> <u>Forecasted</u> <u>Utilization</u>
Carolina Forest High	1,127	45%	1,454	59%	1,626	66%
Black Water Middle	531	58%	490	54%	536	59%
Ocean Bay Middle	793	87%	843	93%	944	104%
Conway High	1,461	64%	1,496	65%	1,559	68%
Whittemore Park Middle	702	77%	721	79%	753	83%
Socastee High	1,693	96%	1,739	99%	2,011	114%
Forestbrook Middle	1,376	136%	1,560	154%	1,590	157%

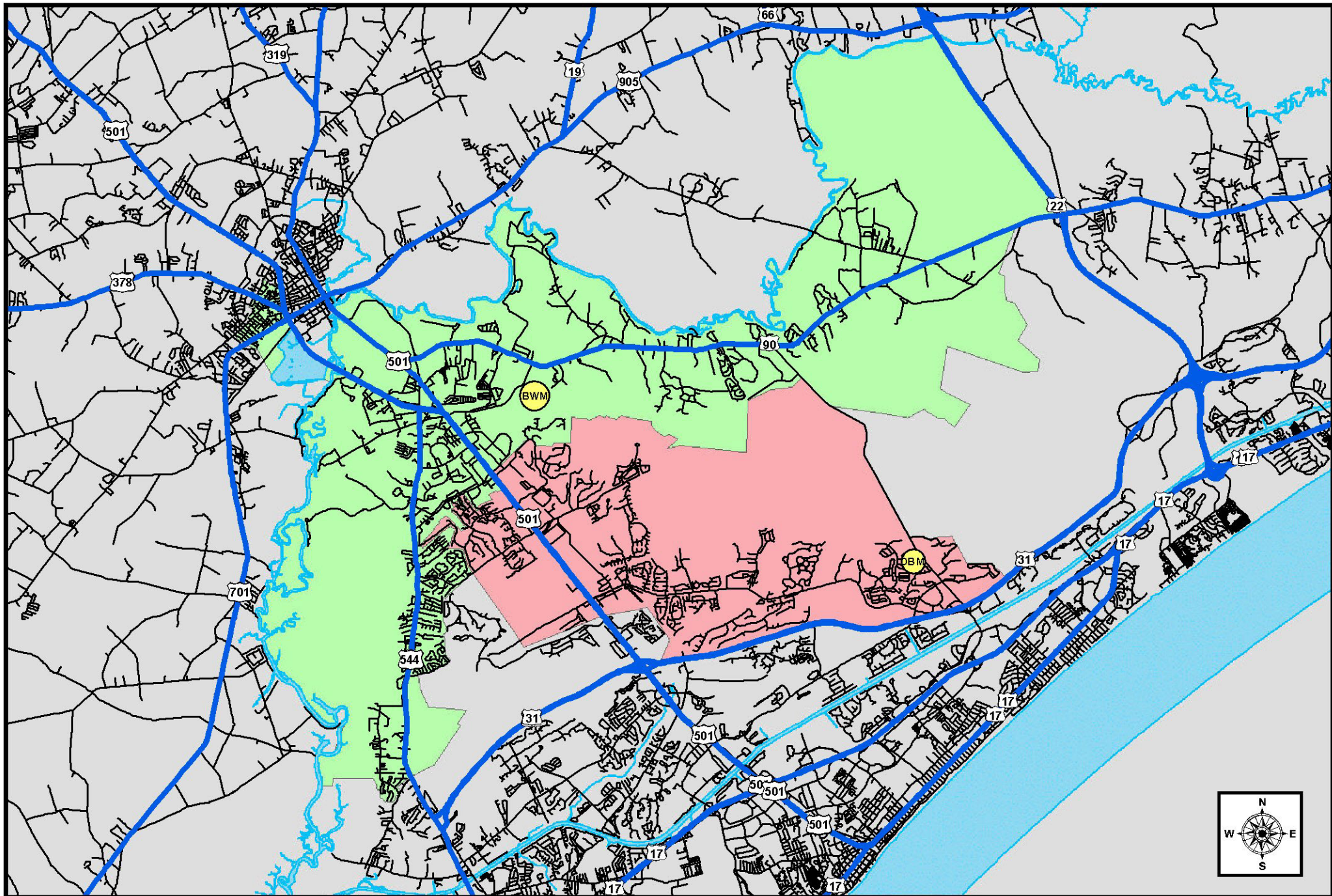
CAPACITY RELIEF OPTIONS (Short-Term Building Projects - Board Requested Options)

NEW Middle School for Socastee Area - \$30 million

Forestbrook Middle Addition - \$16 million

Socastee High - TBD

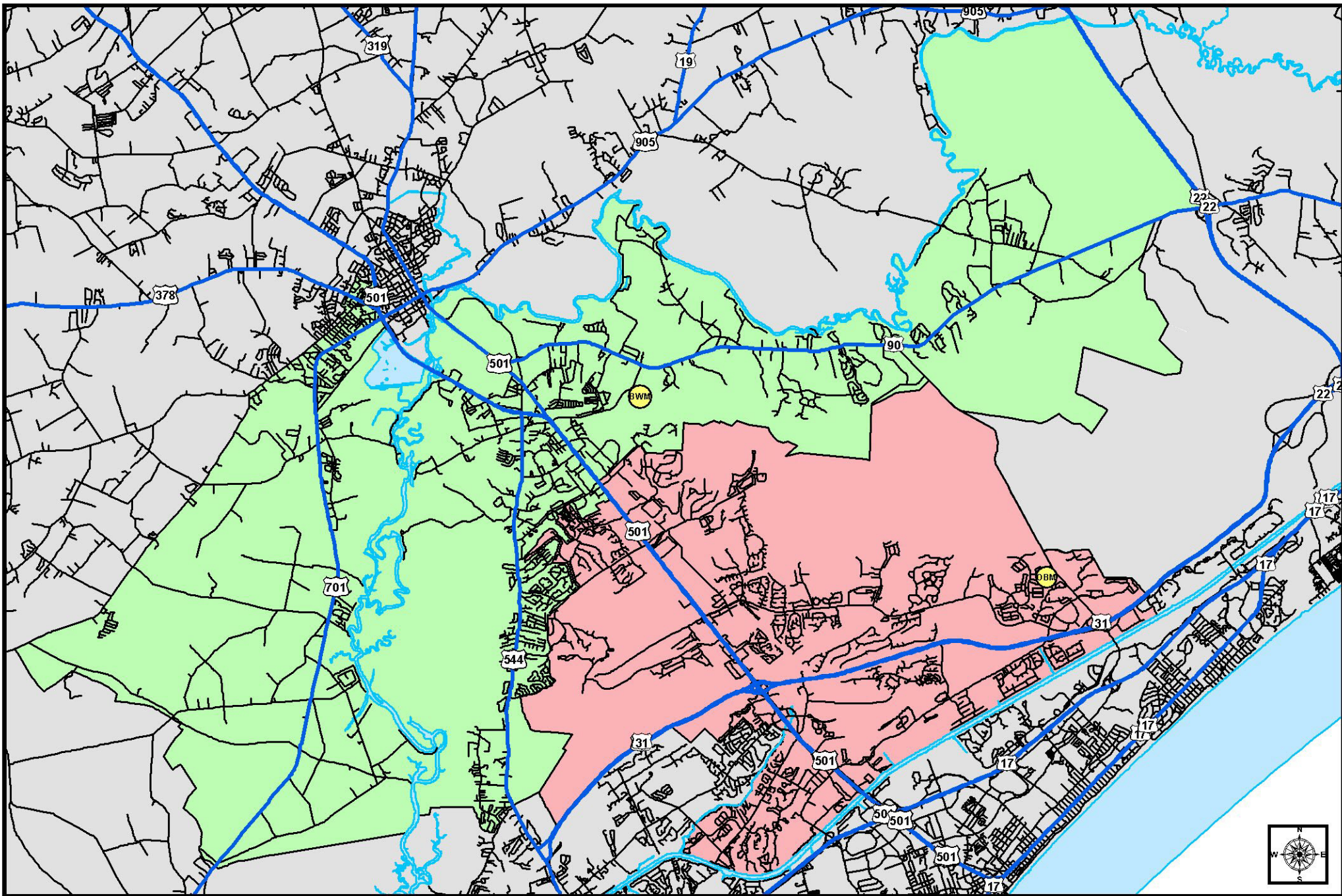
Ocean Bay Middle - TBD



Legend

- | | |
|--------------------|--------------------|
| Highways | SCHOOL |
| Roads | Black Water Middle |
| Major Water Bodies | Ocean Bay Middle |

Carolina Forest Area Middle School Realignment Option 2 (River Oaks Elementary becomes part of the Socastee Attendance Area)



- Legend**
- Highways
 - Roads
 - Major Water Bodies
 - 2012-13 Middle School Areas
 - Black Water Middle
 - Ocean Bay Middle

Black Water Middle - Ocean Bay Middle Existing Attendance Areas