

**CAROLINA FOREST ATTENDANCE AREA
PROPOSED MIDDLE SCHOOL /HIGH SCHOOL REALIGNMENT OPTIONS**

***OPTION 3
(West of Hwy 501 to BWM, Burcale Rd to Socastee, MB National and Waterford to BW/M)***

Data does not include Special Needs Self-Contained or other Special programs

<u>Existing Attendance Areas</u>	<u>2012-13 Average Daily Membership</u>	<u>2012-13 Utilization</u>	<u>Realignment Areas</u>	<u>Total</u>	<u>Students Moved</u>
Carolina Forest High	1661	67%	BWM to WPM	152	
Black Water Middle	712	78%	OBM to BWM	150	
Ocean Bay Middle	1130	124%	OBM to FBM	154	
River Oaks Elementary	607	70%	CFH to CH	214	
Conway High	1223	53%	CFH to SH	142	
Whittemore Park Middle	565	62%	ROE to FBE	283	
Socastee High	1350	77%			
Forestbrook Middle	1035	102%			
Forestbrook Elementary	870	79%			

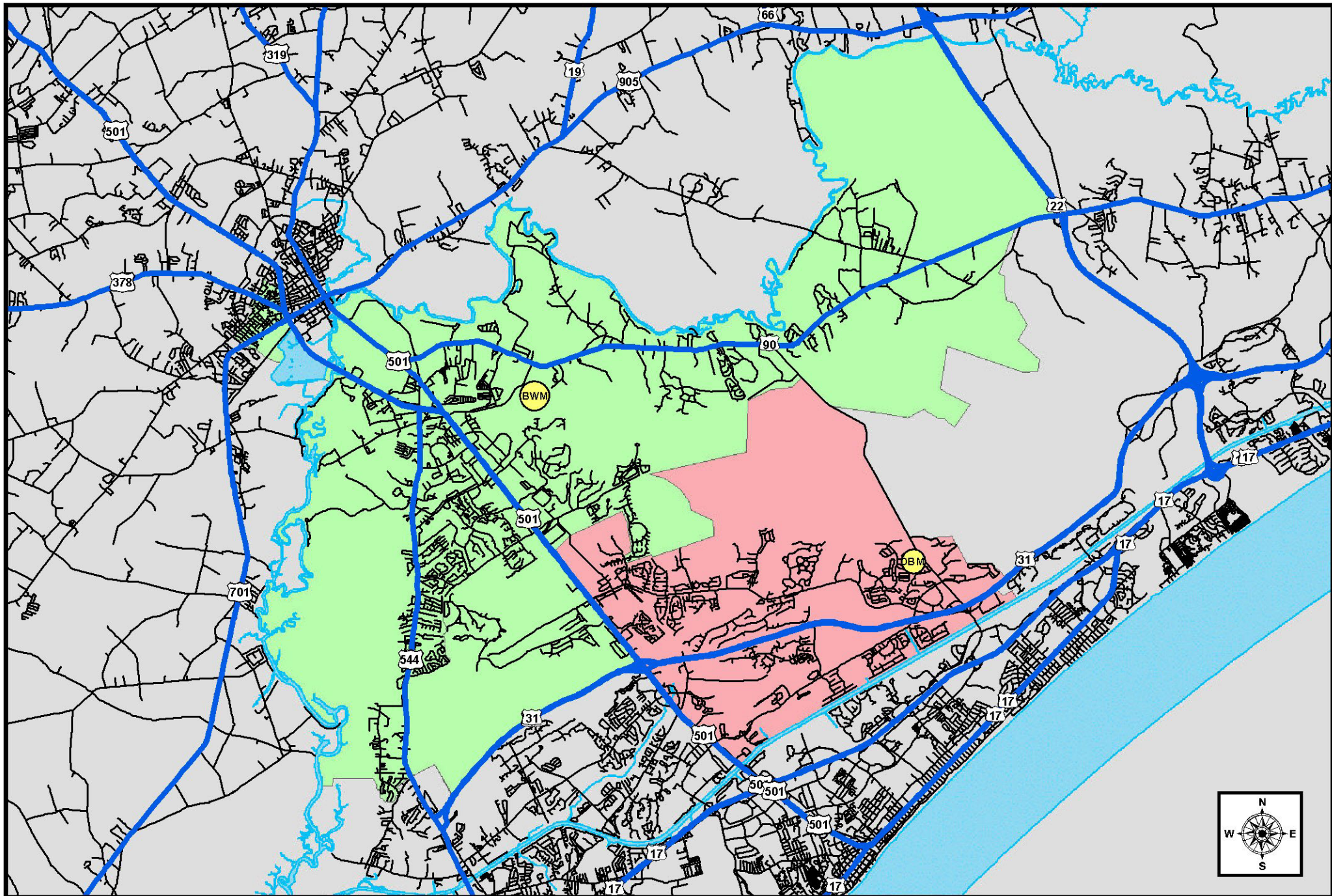
<u>Realigned Student Data</u>	<u>2013-14 Forecasted ADM</u>	<u>2013-14 Forecasted Utilization</u>	<u>2017-18 Forecasted ADM</u>	<u>2017-18 Forecasted Utilization</u>	<u>2022-23 Forecasted ADM</u>	<u>2022-23 Forecasted Utilization</u>
Carolina Forest High	1,305	53%	1,632	66%	1,804	73%
Black Water Middle	531	58%	490	54%	536	59%
Ocean Bay Middle	992	109%	1,042	115%	1,143	126%
River Oaks Elementary	347	40%	404	46%	389	45%
Conway High	1,461	64%	1,496	65%	1,559	68%
Whittemore Park Middle	702	77%	721	79%	753	83%
Socastee High	1,515	86%	1,561	89%	1,833	104%
Forestbrook Middle	1,181	117%	1,365	135%	1,395	138%
Forestbrook Elementary	1,151	105%	1,147	105%	1,172	107%

<u>Option for NEW 4-6 Intermediate in Socastee</u>	<u>2013-14 Forecasted ADM</u>	<u>2013-14 Forecasted Utilization</u>	<u>2017-18 Forecasted ADM</u>	<u>2017-18 Forecasted Utilization</u>	<u>2022-23 Forecasted ADM</u>	<u>2022-23 Forecasted Utilization</u>
Forestbrook Middle	858	85%	943	93%	1,043	103%
Forestbrook Elementary (PK-3)	800	73%	850	77%	910	83%
Lakewood Elementary (PK-3)	800	73%	850	77%	910	83%
NEW Intermediate (4-6)	1,223	NA	NA	NA	NA	NA

<u>Option for NEW 5-6 Intermediate in Socastee</u>	<u>2013-14 Forecasted ADM</u>	<u>2013-14 Forecasted Utilization</u>	<u>2017-18 Forecasted ADM</u>	<u>2017-18 Forecasted Utilization</u>	<u>2022-23 Forecasted ADM</u>	<u>2022-23 Forecasted Utilization</u>
Forestbrook Middle (7-8)	858	85%	943	93%	1,043	103%
Forestbrook Elementary (PK-4)	991	90%	1,041	95%	1,101	100%
Lakewood Elementary (PK-4)	991	90%	1,041	95%	1,101	100%
NEW Intermediate (5-6)	842	NA	NA	NA	NA	NA

CAPACITY RELIEF OPTIONS (Short-Term Building Projects - Board Requested Options)

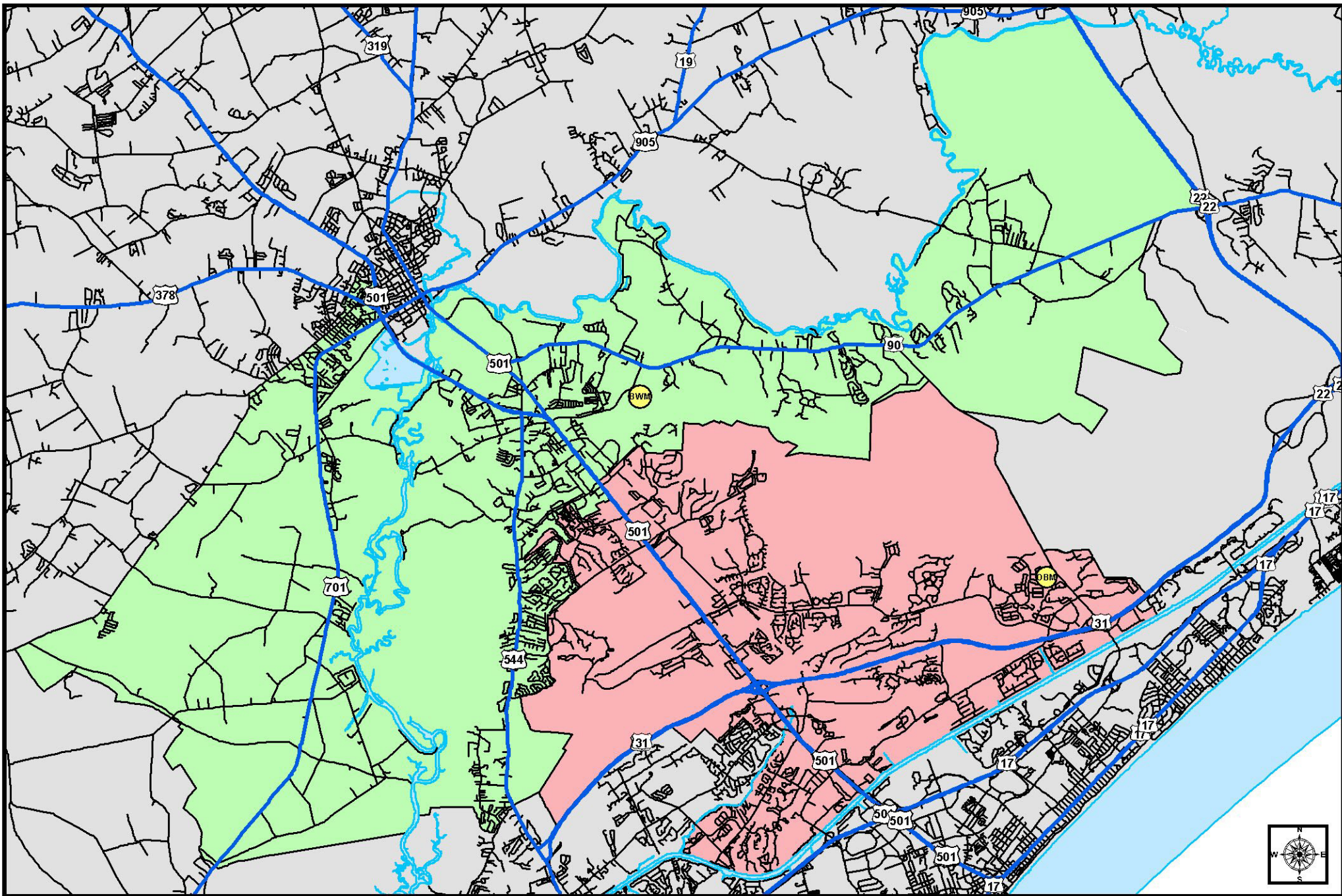
Socastee Area NEW Intermediate (4-6) - \$34 million
Socastee Area NEW Intermediate (5-6) - \$25 million
Forestbrook Middle Addition - \$16 million
Lakewood Elementary - TBD
Forestbrook Elementary - TB
Socastee High - TBD



Legend

- | | |
|---|---|
| — Highways | SCHOOL |
| — Roads | ■ Black Water Middle |
| — Major Water Bodies | ■ Ocean Bay Middle |

**Carolina Forest Area Middle School Realignment
Option 3
(West of Hwy 501 to BWM, Burcale Rd to Socastee,
MB National and Waterford to BWM)**



Legend

- Highways
- Roads
- Major Water Bodies
- 2012-13 Middle School Areas
- Black Water Middle
- Ocean Bay Middle

Black Water Middle - Ocean Bay Middle Existing Attendance Areas