

CAROLINA FOREST ATTENDANCE AREA
PROPOSED MIDDLE SCHOOL /HIGH SCHOOL REALIGNMENT OPTIONS

OPTION 4

(West of Hwy 501 to BWM, MB National and Waterford to BWM)

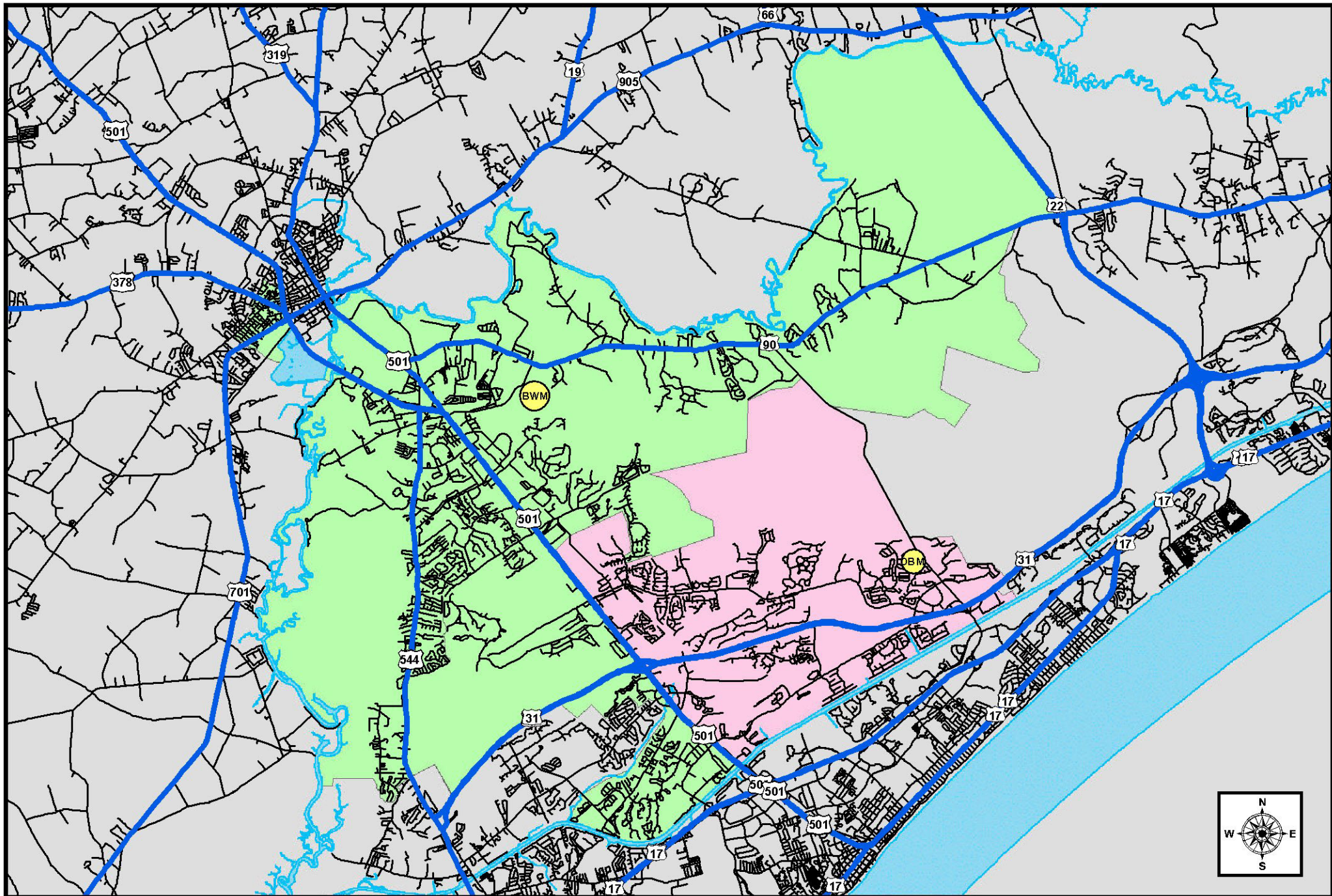
Data does not include Special Needs Self-Contained or other Special programs

<u>Existing Attendance Areas</u>	<u>2012-13</u>	<u>2012-13</u>	<u>Realignment Areas</u>	<u>Total Students</u>
	<u>Average Daily Membership</u>	<u>Utilization</u>		<u>Moved</u>
Carolina Forest High	1661	67%	BWM to WPM	152
Black Water Middle	712	78%	OBM to BWM	349
Ocean Bay Middle	1130	124%	CFH to CH	214
Conway High	1223	53%		
Whittemore Park Middle	565	62%		

<u>Realigned Student Data</u>	<u>2013-14</u>	<u>2013-14</u>	<u>2017-18</u>	<u>2017-18</u>	<u>2022-23</u>	<u>2022-23</u>
	<u>Forecasted ADM</u>	<u>Utilization</u>	<u>Forecasted ADM</u>	<u>Utilization</u>	<u>Forecasted ADM</u>	<u>Utilization</u>
Carolina Forest High	1,447	58%	1,774	72%	1,946	79%
Black Water Middle	880	97%	839	92%	885	97%
Ocean Bay Middle	793	87%	843	93%	944	104%
Conway High	1,461	64%	1,496	65%	1,559	68%
Whittemore Park Middle	702	77%	721	79%	753	83%

CAPACITY RELIEF OPTIONS (Short-Term Building Projects - Board Requested Options)

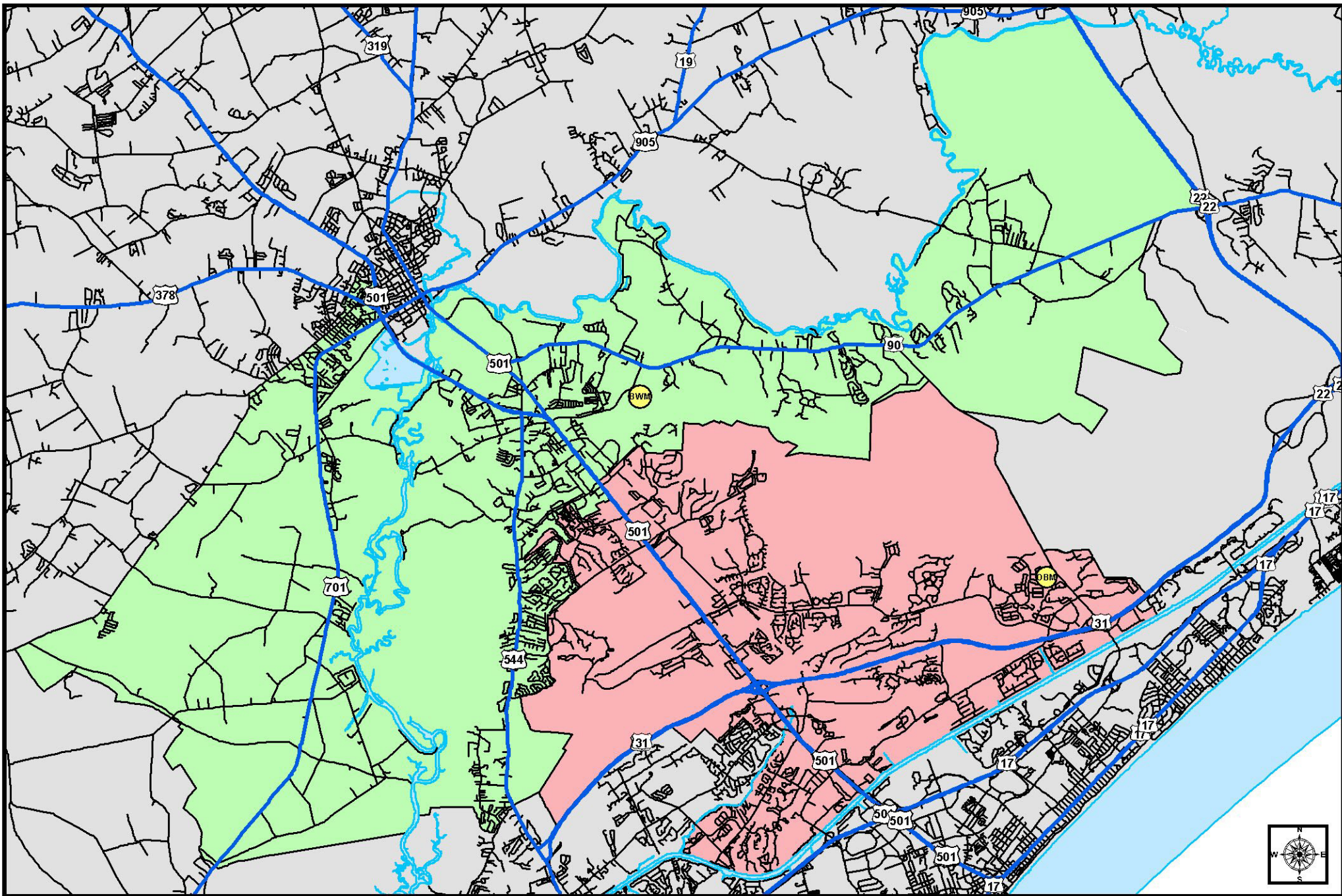
Ocean Bay Middle - TBD



Legend

- Highways
- Roads
- Major Water Bodies
- SCHOOL**
- Black Water Middle
- Ocean Bay Middle

**Carolina Forest Area Middle School Realignment
Option 4
(West of Hwy 501 to BWM, MB National and Waterford to BWM)**



- Legend**
- Highways
 - Roads
 - Major Water Bodies
 - 2012-13 Middle School Areas
 - Black Water Middle
 - Ocean Bay Middle

Black Water Middle - Ocean Bay Middle Existing Attendance Areas