

CAROLINA FOREST ATTENDANCE AREA
PROPOSED MIDDLE SCHOOL /HIGH SCHOOL REALIGNMENT OPTIONS
OPTION 5
(River Oaks Elementary becomes part of the Myrtle Beach Attendance Area)

Data does not include Special Needs Self-Contained or other Special programs

<u>Existing Attendance Areas</u>	<u>2012-13 Average</u>		<u>Total Students</u>	
	<u>Daily Membership</u>	<u>2012-13 Utilization</u>	<u>Realignment Areas</u>	<u>Moved</u>
Carolina Forest High	1661	67%	BWM to WPM	152
Black Water Middle	712	78%	OBM to MBM	349
Ocean Bay Middle	1130	124%	CFH to CH	214
Conway High	1223	53%	CFH to MBH	320
Whitemore Park Middle	565	62%		
Myrtle Beach High	1019	64%		
Myrtle Beach Middle	974	107%		

<u>Realigned Student Data</u>	<u>2013-14 Forecasted</u>		<u>2017-18 Forecasted</u>		<u>2022-23 Forecasted</u>	
	<u>ADM</u>	<u>2013-14 Utilization</u>	<u>ADM</u>	<u>2017-18 Utilization</u>	<u>ADM</u>	<u>2022-23 Utilization</u>
Carolina Forest High	1,127	45%	1,454	59%	1,626	66%
Black Water Middle	531	58%	490	54%	536	59%
Ocean Bay Middle	793	87%	843	93%	944	104%
Conway High	1,461	64%	1,496	65%	1,559	68%
Whitemore Park Middle	702	77%	721	79%	753	83%
Myrtle Beach High	1,342	84%	1,681	105%	1,819	114%
Myrtle Beach Middle	1,391	153%	1,429	157%	1,499	165%

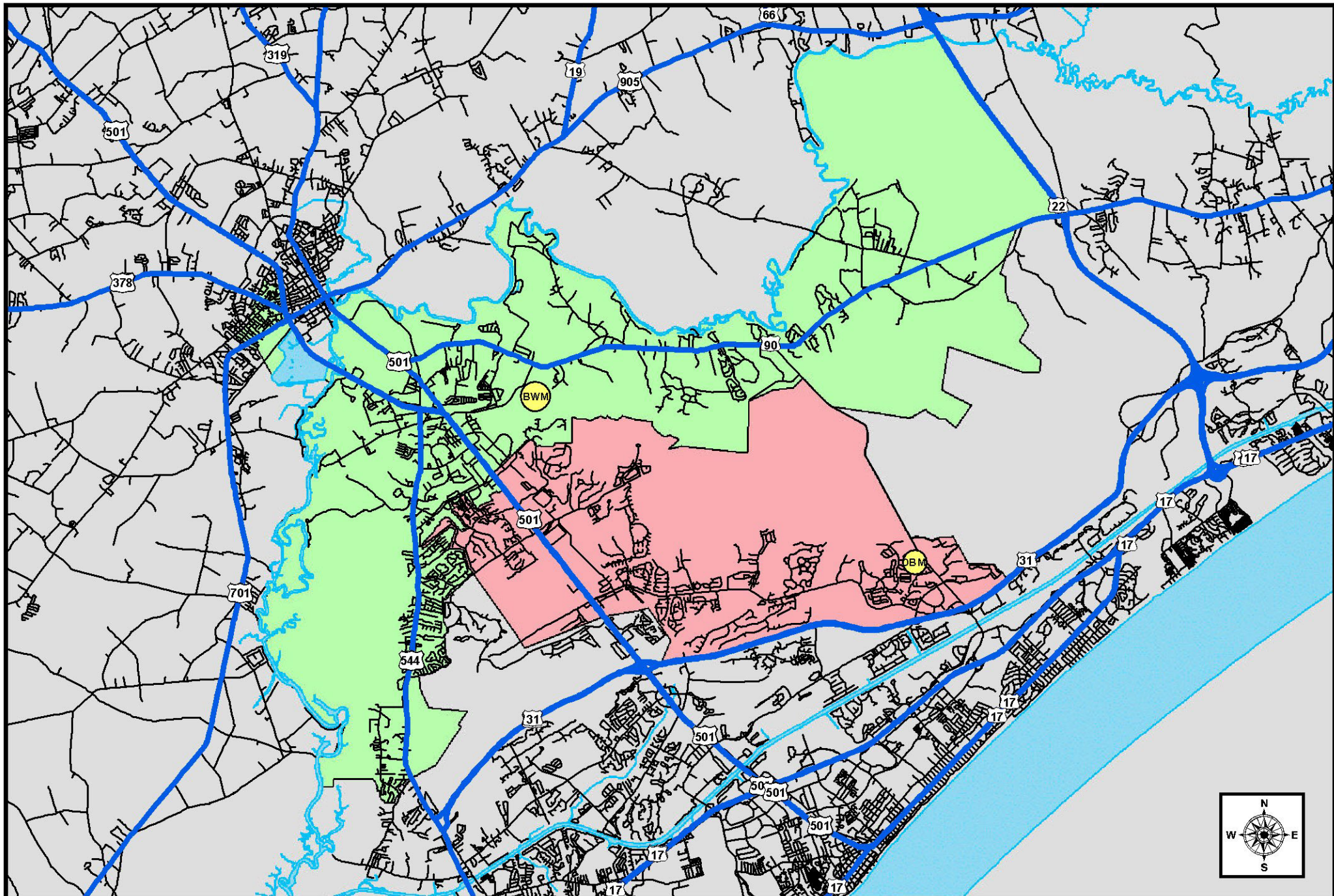
<u>Option for NEW 4-6 Intermediate in Myrtle Beach</u>	<u>2013-14 Forecasted</u>		<u>2017-18 Forecasted</u>		<u>2022-23 Forecasted</u>	
	<u>ADM</u>	<u>2013-14 Utilization</u>	<u>ADM</u>	<u>2017-18 Utilization</u>	<u>ADM</u>	<u>2022-23 Utilization</u>
Myrtle Beach Middle (7-8)	898	99%	958	105%	1,018	112%
NEW Intermediate (4-6)	1,238	NA	1,288	NA	1,313	NA
River Oaks Elementary (PK - 6)	776	89%	806	93%	856	98%

<u>Option for Revised Grade Structure (New 5-6 school)*</u>	<u>2013-14 Forecasted</u>		<u>2017-18 Forecasted</u>		<u>2022-23 Forecasted</u>	
	<u>ADM</u>	<u>2013-14 Utilization</u>	<u>ADM</u>	<u>2017-18 Utilization</u>	<u>ADM</u>	<u>2022-23 Utilization</u>
Myrtle Beach Middle (7-8)	898	99%	958	105%	1,018	112%
Myrtle Beach Primary (CD - K)	700	82%	725	85%	755	89%
Myrtle Beach Elementary (1-2)	915	125%	930	127%	960	131%
River Oaks Elementary (3-4)	862	91%	872	92%	902	95%
NEW Intermediate (5-6)	931	NA	951	NA	981	NA

CAPACITY RELIEF OPTIONS (Short-Term Building Projects - Board Requested Options)

Myrtle Beach Intermediate (4-6) - estimated at \$34 million
 Myrtle Beach Intermediate (5-6) - estimated at \$25 million
 River Oaks Elementary - TBD
 Myrtle Beach Middle - TBD

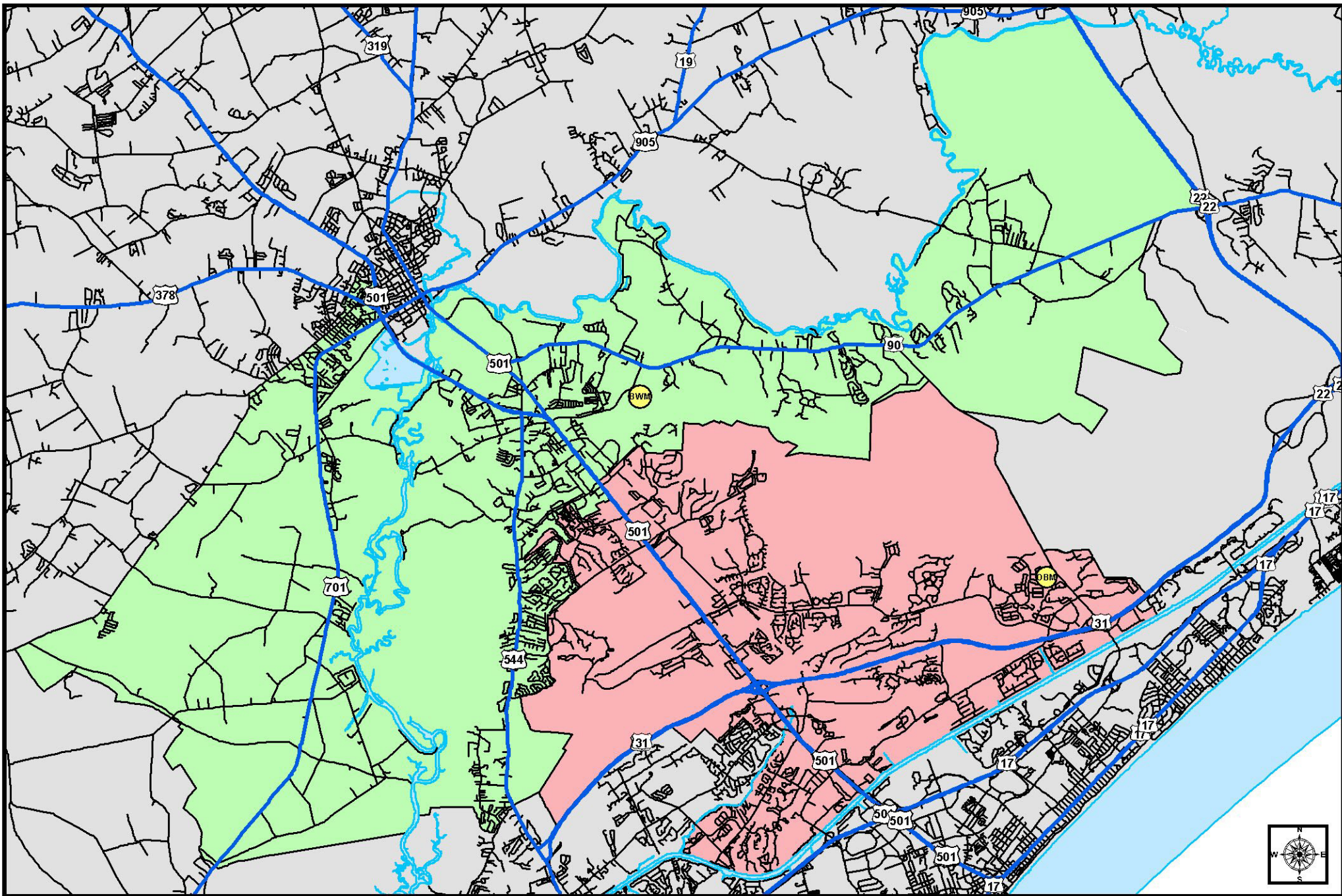
*Capacity of each facility was recalculated to reflect new grade structure



Legend

- | | |
|--|--|
|  Highways | SCHOOL |
|  Roads |  Black Water Middle |
|  Major Water Bodies |  Ocean Bay Middle |

Carolina Forest Area Middle School Realignment Option 5 (River Oaks Elementary to Myrtle Beach)



- Legend**
- Highways
 - Roads
 - Major Water Bodies
 - 2012-13 Middle School Areas
 - Black Water Middle
 - Ocean Bay Middle

Black Water Middle - Ocean Bay Middle Existing Attendance Areas